



SCALE: 1"=200'

- STONE FOUND
- P.K. NAIL FOUND
- ▲ R.R. SPIKE FOUND
- 5/8" REBAR FOUND UNLESS OTHERWISE NOTED
- △ R.R. SPIKE SET
- 5/8" REBAR SET WITH I.D. CAP
- I.D. CAP MARKED "BAKER 6938"
- "NDL" NEW DIVISION LINE

SUGAR CREEK TOWNSHIP
 S.W. QTR. FRACTIONAL SECTION 5
 T-10 N; R-10 W
 STARK COUNTY, OHIO

SURVEYED FOR: ELI WEAVER

REFERENCES

O.R. VOL. 1091 PAGE 585
 O.R. VOL. 4105 PAGE 716
 O.I.R. #200508110053154
 O.I.R. #200205170039922
 BEARINGS FROM O.I.R. #200508110053154

S-41-21
 925-930 ✓

28
 31 32



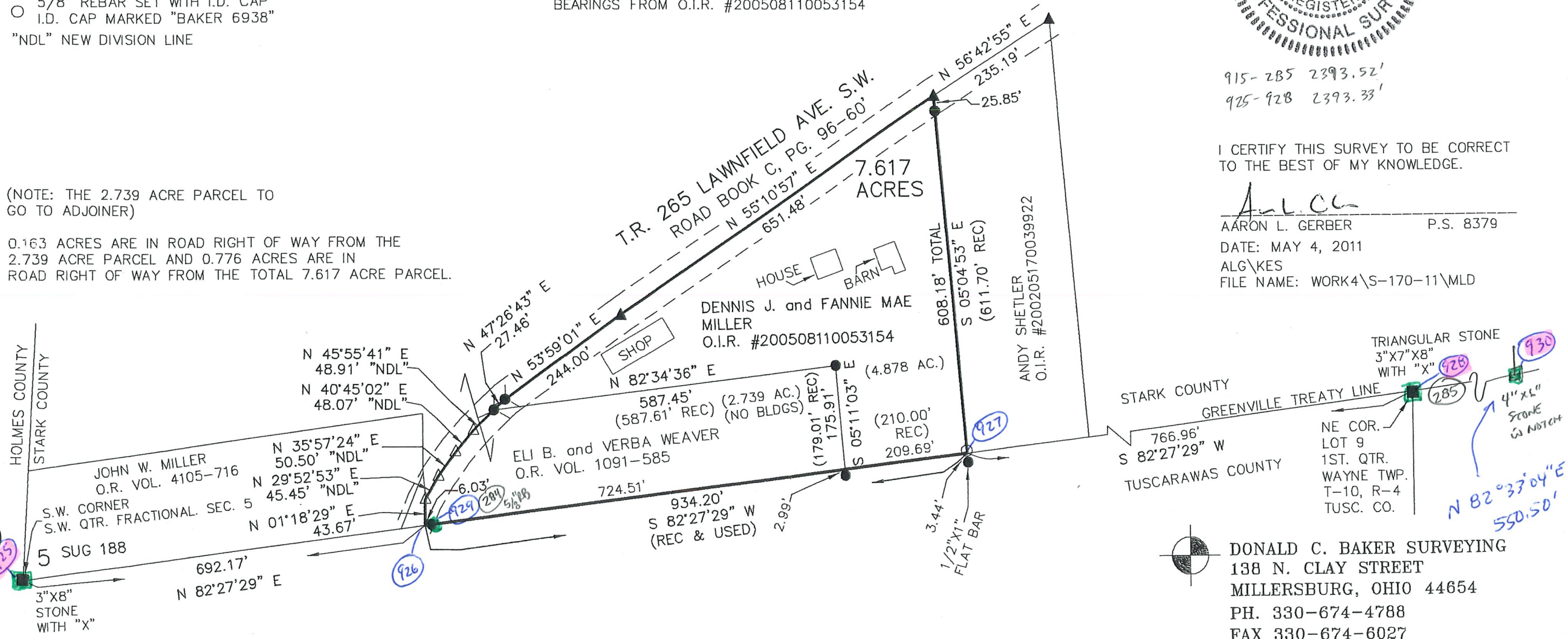
915-285 2393.52'
 925-928 2393.33'

I CERTIFY THIS SURVEY TO BE CORRECT TO THE BEST OF MY KNOWLEDGE.

A.L.G.
 AARON L. GERBER P.S. 8379
 DATE: MAY 4, 2011
 ALG\KES
 FILE NAME: WORK4\S-170-11\MLD

(NOTE: THE 2.739 ACRE PARCEL TO GO TO ADJOINER)

0.163 ACRES ARE IN ROAD RIGHT OF WAY FROM THE 2.739 ACRE PARCEL AND 0.776 ACRES ARE IN ROAD RIGHT OF WAY FROM THE TOTAL 7.617 ACRE PARCEL.



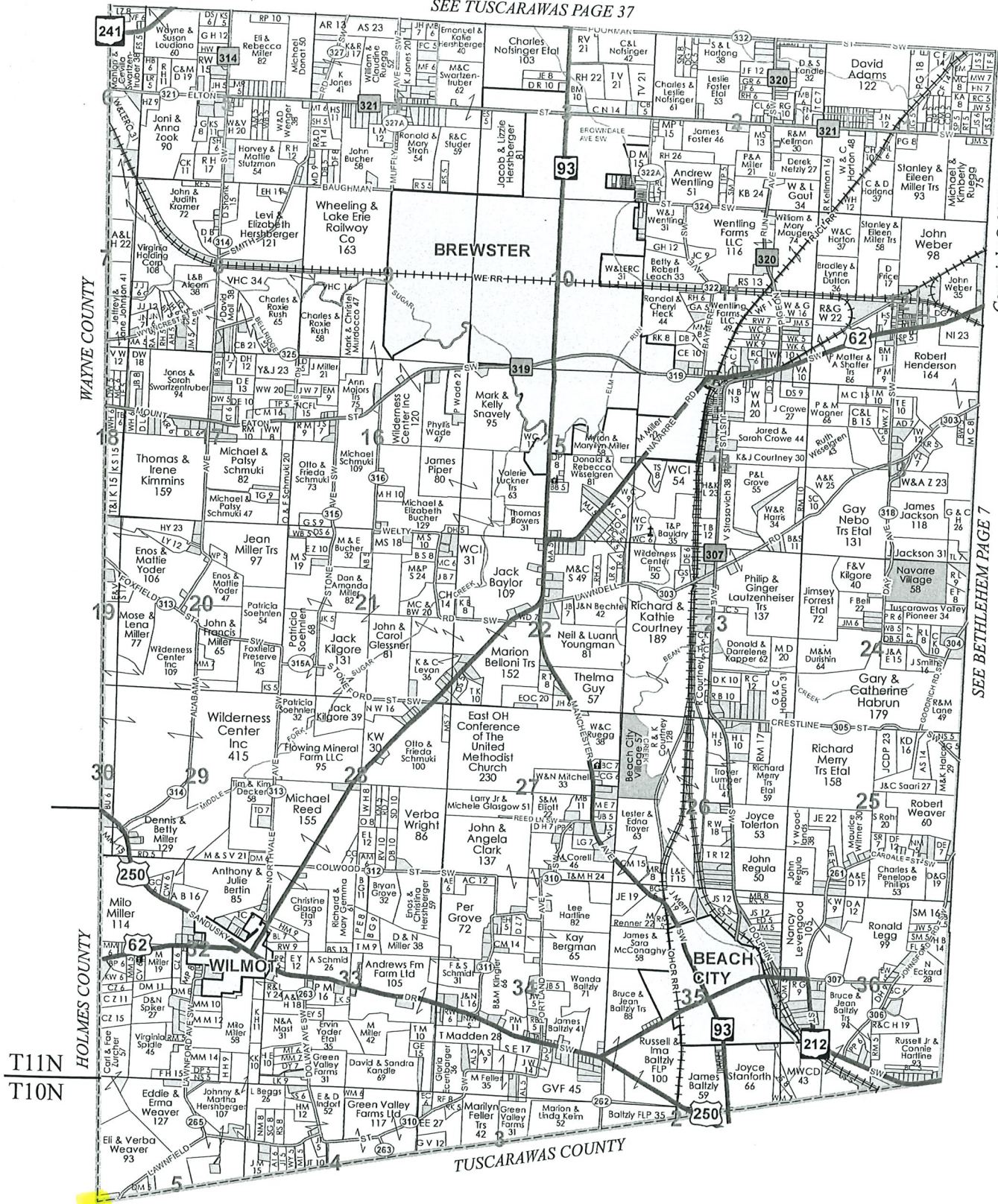
DONALD C. BAKER SURVEYING
 138 N. CLAY STREET
 MILLERSBURG, OHIO 44654
 PH. 330-674-4788
 FAX 330-674-6027

N 82°37'04" E
 550.50'

#169-19

SUGARCREEK • T10 & 11 • R10

SEE TUSCARAWAS PAGE 37



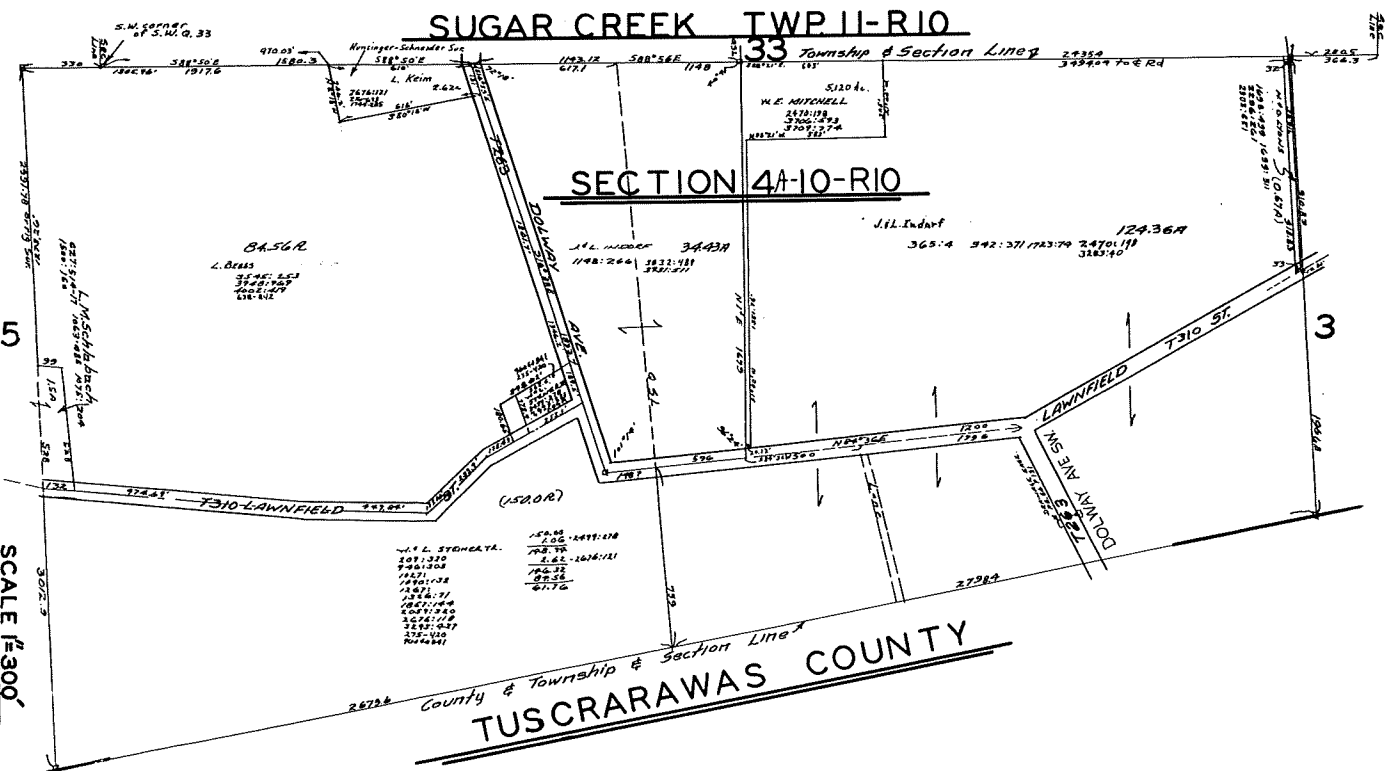
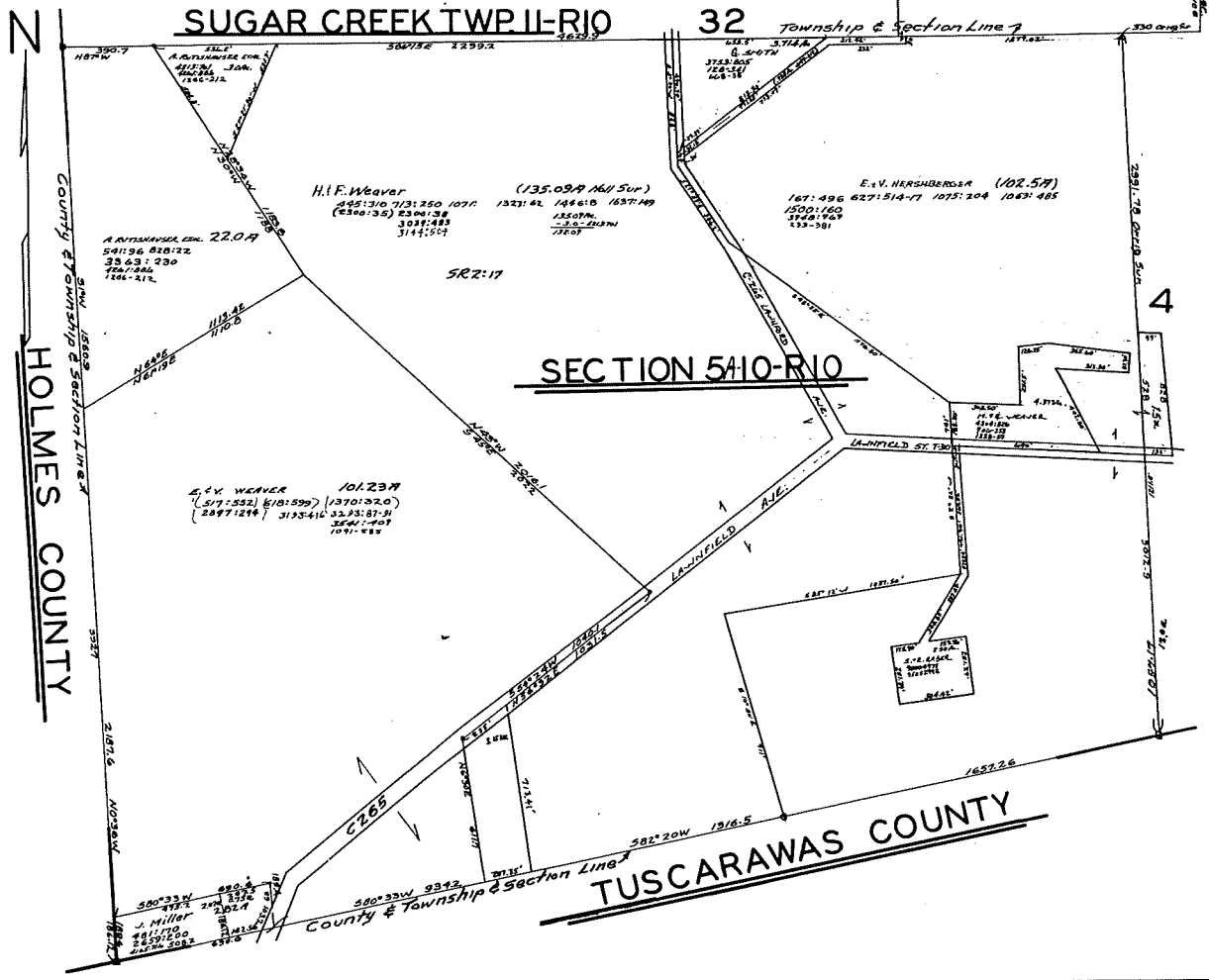
Copyright © 2013 Mapping Solutions

SEE BETHEHEM PAGE 7

T11N
T10N

TUSCARAWAS COUNTY

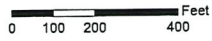
SUGAR CREEK 4 & 5-10-10 SECTION 4 & 5



SCALE 1"=300'

Stark County Auditor's Tax Map

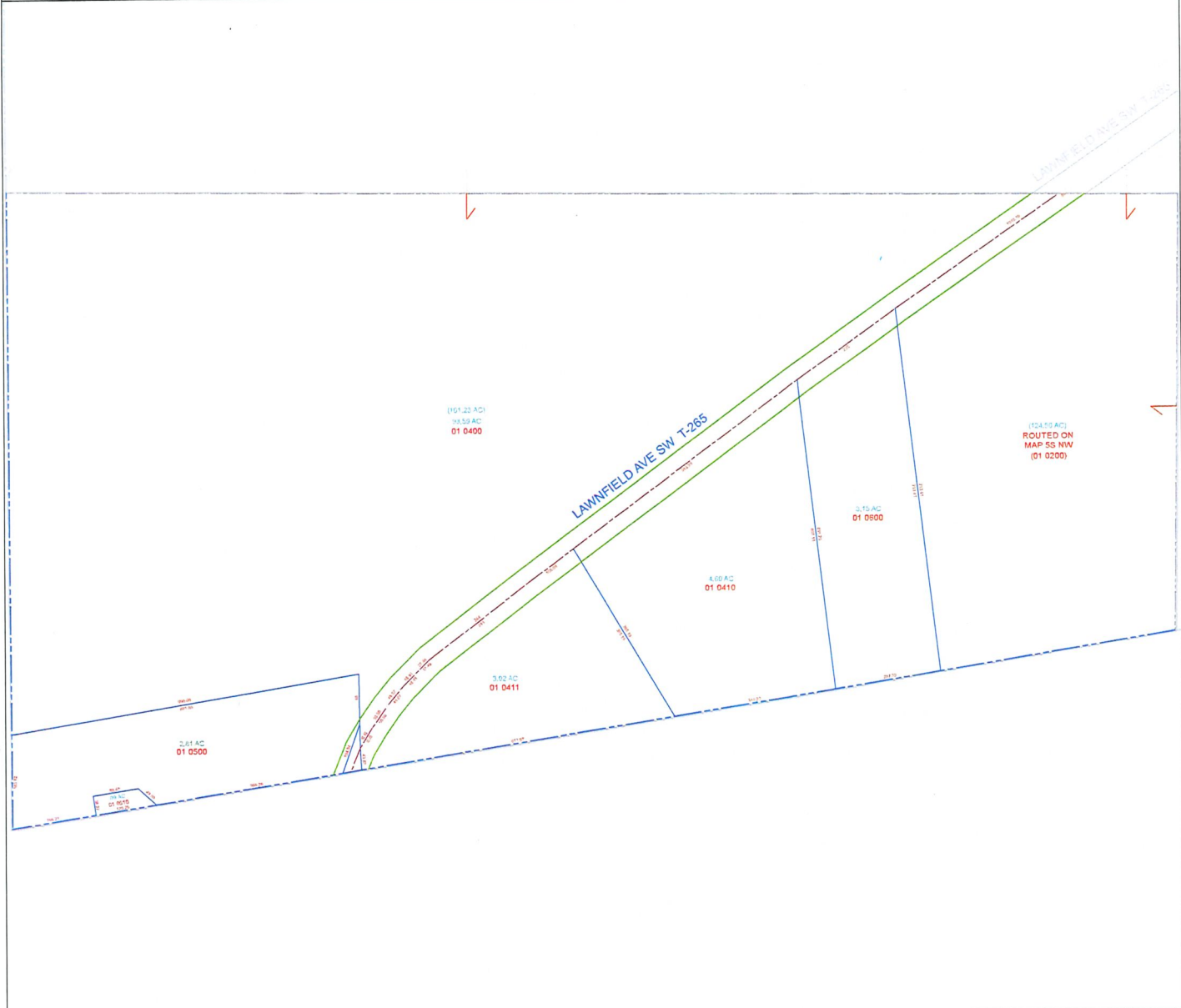
Scale: 1 inch = 68 feet



Tax District:
00640

Sugarcreek Twp.
Township 10 Range 10
Section: 5S Quarter: SW

SUG_5S_NW	SUG_5S_NE
R110_5S_SW	SUG_5S_SE



Legal Disclaimer: Public information data is furnished by the Stark County Auditor's Office, and must be accepted and used by the recipient with the understanding that the Stark County Auditor's Office makes no warranties, expressed or implied, concerning the accuracy, completeness, reliability, or suitability of this data. Furthermore, the Stark County Auditor's Office assumes no liability whatsoever associated with the use or misuse of such data.
Source: Stark County Auditor's GIS Department 330-451-7193 <http://www.starkcountyohio.gov/auditor> Projection: State Plane Ohio North NAD 1983ft, Jon Gtzl 5/2/11

Map Abbreviation:
SUG_5S_SW