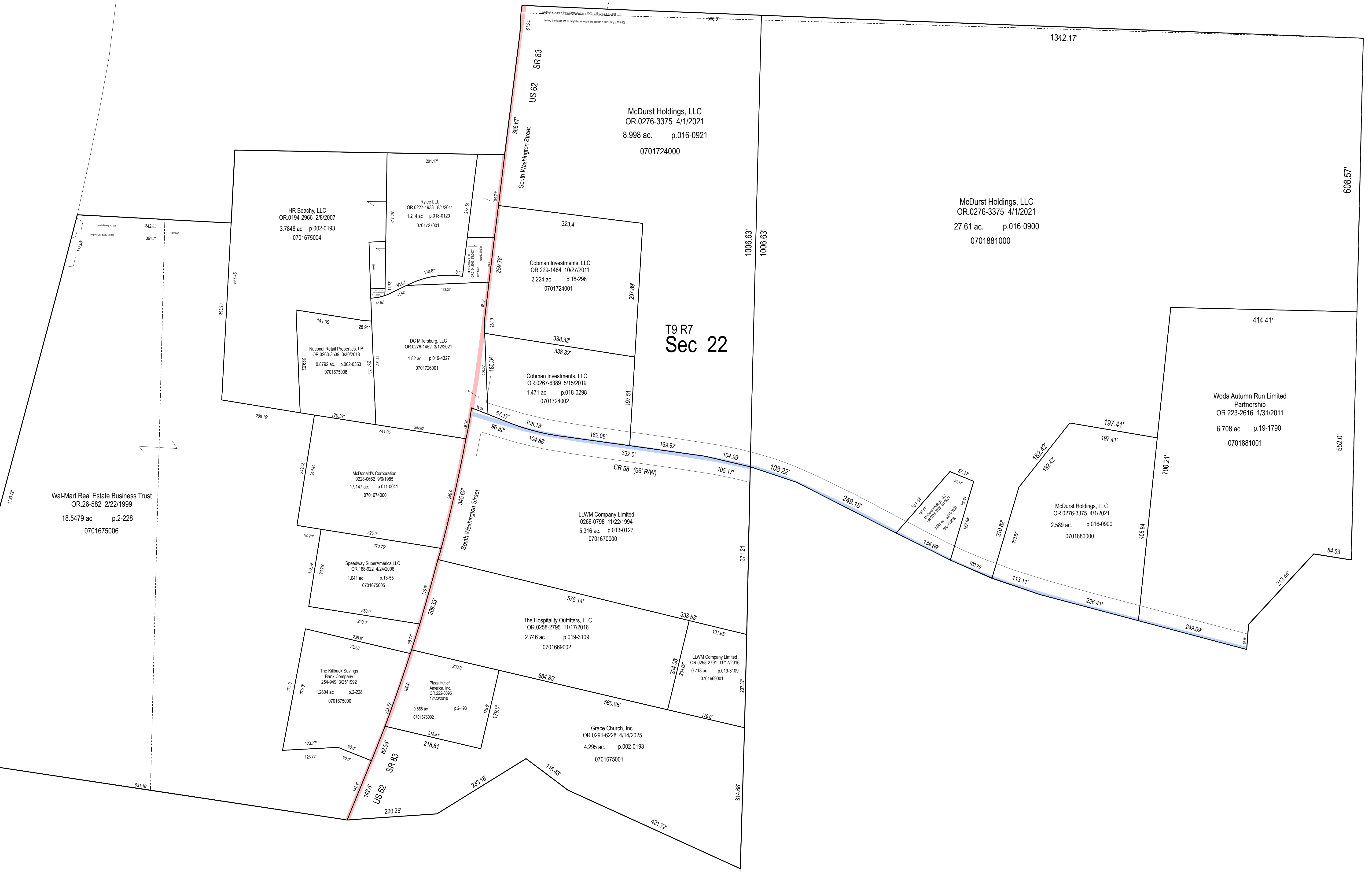


MV-08



Wal-Mart Real Estate Business Trust  
 OR.26-582 2/22/1999  
 18.5479 ac p.2-228  
 0701675006

HR Beachy, LLC  
 OR.0194-2966 2/8/2007  
 3.7848 ac p.002-0193  
 0701675004

Ryline Ltd  
 OR.0227-1533 8/1/2011  
 1.214 ac p.018-0120  
 0701727001

Cobman Investments, LLC  
 OR.229-1484 10/27/2011  
 2.224 ac p.18-298  
 0701724001

McDurst Holdings, LLC  
 OR.0276-3375 4/1/2021  
 8.998 ac p.016-0921  
 0701724000

McDurst Holdings, LLC  
 OR.0276-3375 4/1/2021  
 27.61 ac p.016-0900  
 0701881000

Woda Autumn Run Limited  
 Partnership  
 OR.223-2616 1/31/2011  
 6.708 ac p.19-1790  
 0701881001

McDurst Holdings, LLC  
 OR.0276-3375 4/1/2021  
 2.589 ac p.016-0900  
 0701880000

LLWM Company Limited  
 0286-0798 11/22/1994  
 5.316 ac p.013-0127  
 0701670000

The Hospitality Outfitters, LLC  
 OR.0258-2795 11/17/2016  
 2.746 ac p.019-3109  
 0701669002

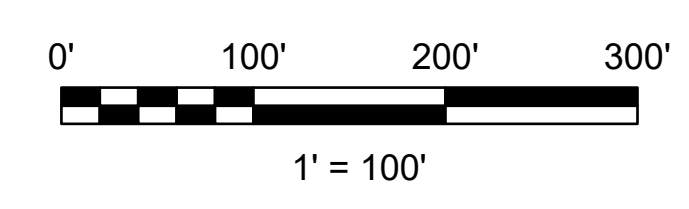
The Kibuck Savings  
 Bank Company  
 254-948 3/25/1952  
 1.2804 ac p.2-228  
 0701675000

Pizza Hut of  
 America, Inc.  
 OR.233-1085  
 12/22/2018  
 0.888 ac p.2-193  
 0701675002

Grace Church, Inc.  
 OR.0291-6228 4/14/2025  
 4.295 ac p.002-0193  
 0701675001

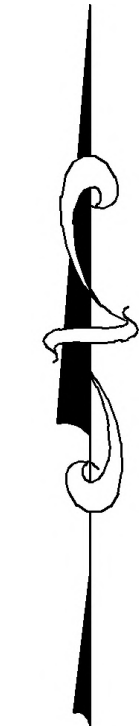
MV-16

Last Revision: 4/15/2025



LET IT BE KNOWN, THIS MAP HAS BEEN PREPARED AS A REFERENCE  
 GUIDE TO PROPERTY OWNERSHIP. WE BELIEVE THIS INFORMATION TO  
 BE CORRECT AND CURRENT, HOWEVER IT IS NOT INTENDED FOR ANY  
 LEGAL USE, WHETHER IT BE SALES, TRANSFERS, TRADES, LEASES  
 OF ANY TYPE, ETC. AND DO NOT ACCEPT RESPONSIBILITY FOR  
 ERRORS OF ANY NATURE OR OMISSIONS CONTAINED HEREIN.

S.F.T.  
 new survey required  
 for next transfer



Village of Millersburg  
 Sec. 22, T-9, R-7  
 Hardy Twp.  
 Holmes County, Ohio

**MV-09**