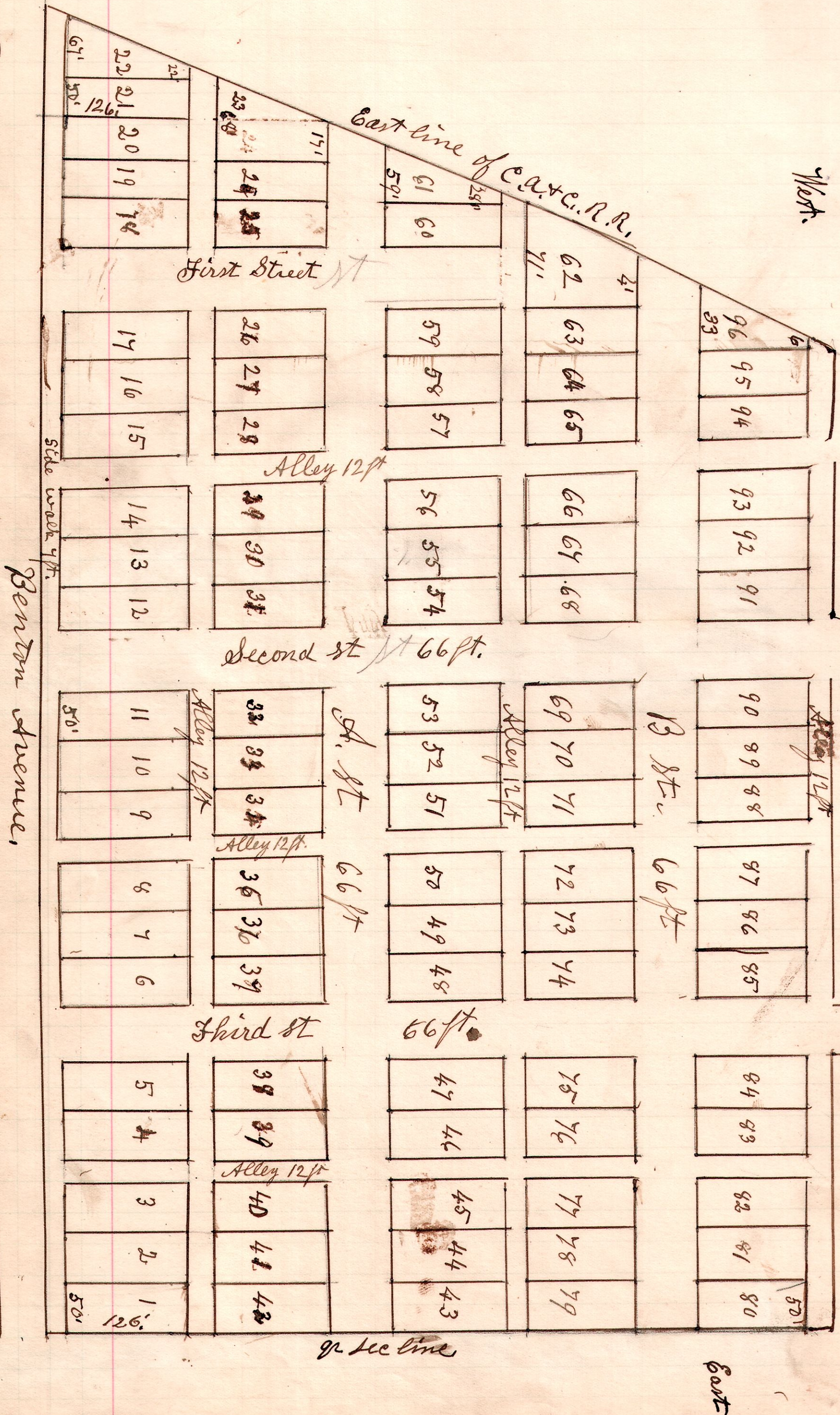
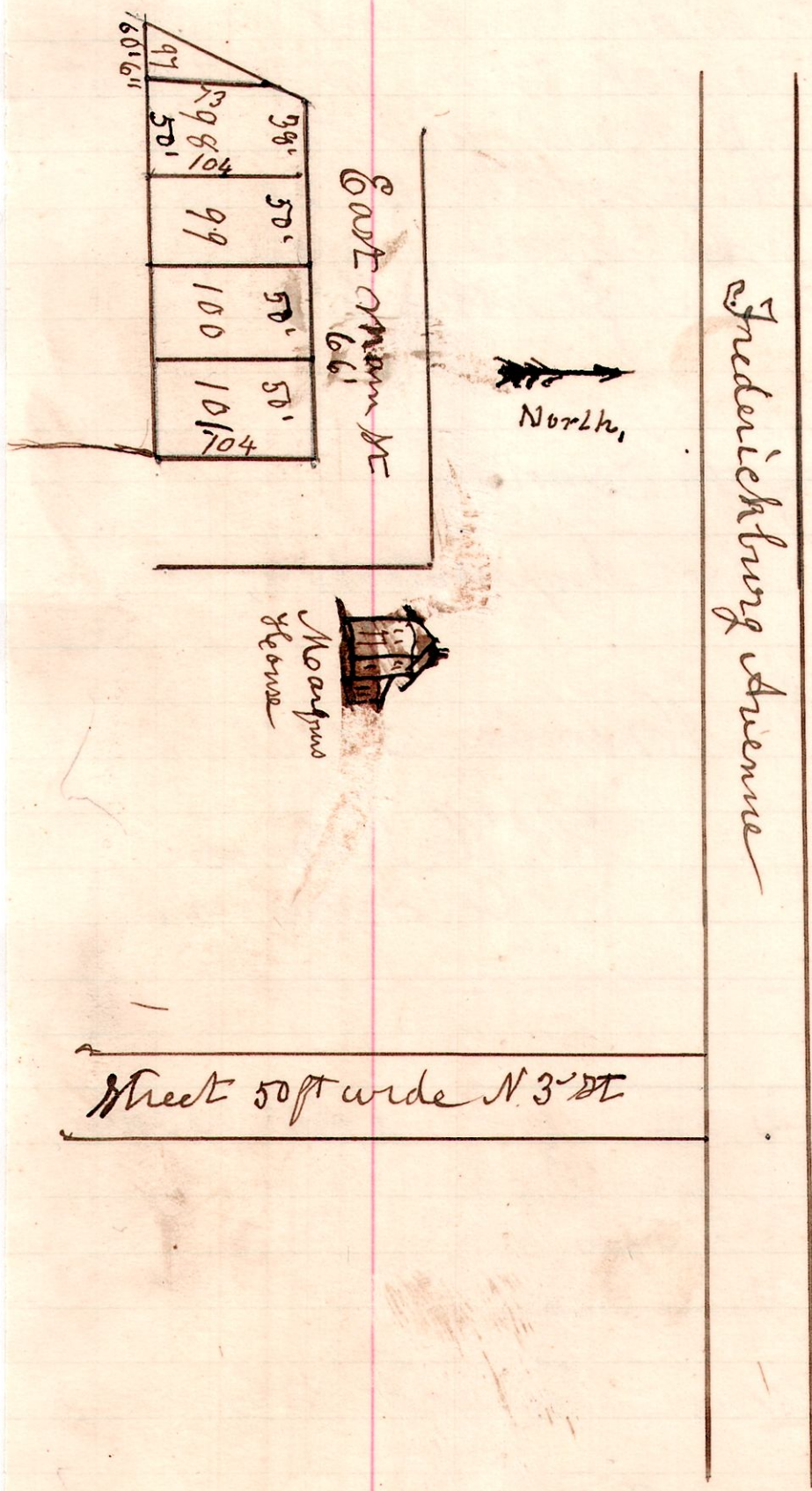


S
9.13.13
R
650





Iron pins drive at outside corners of the corner lots.
 These lots are located on the north east part of the south east quarter of Section 13. T. 13, R. 13.

The square lots are 50 feet front and 126 feet deep. And the fractional lots are as designated on plat, and bounded on the west by the east line of the C. & A. R.
 Lots 97 & 98-99-100 & 101, are as on plat.

Homestead Addition of inlots to the Village of Holmesville, Holmes County Ohio. By the heirs of Henry Croco.
 September 30th 1908.