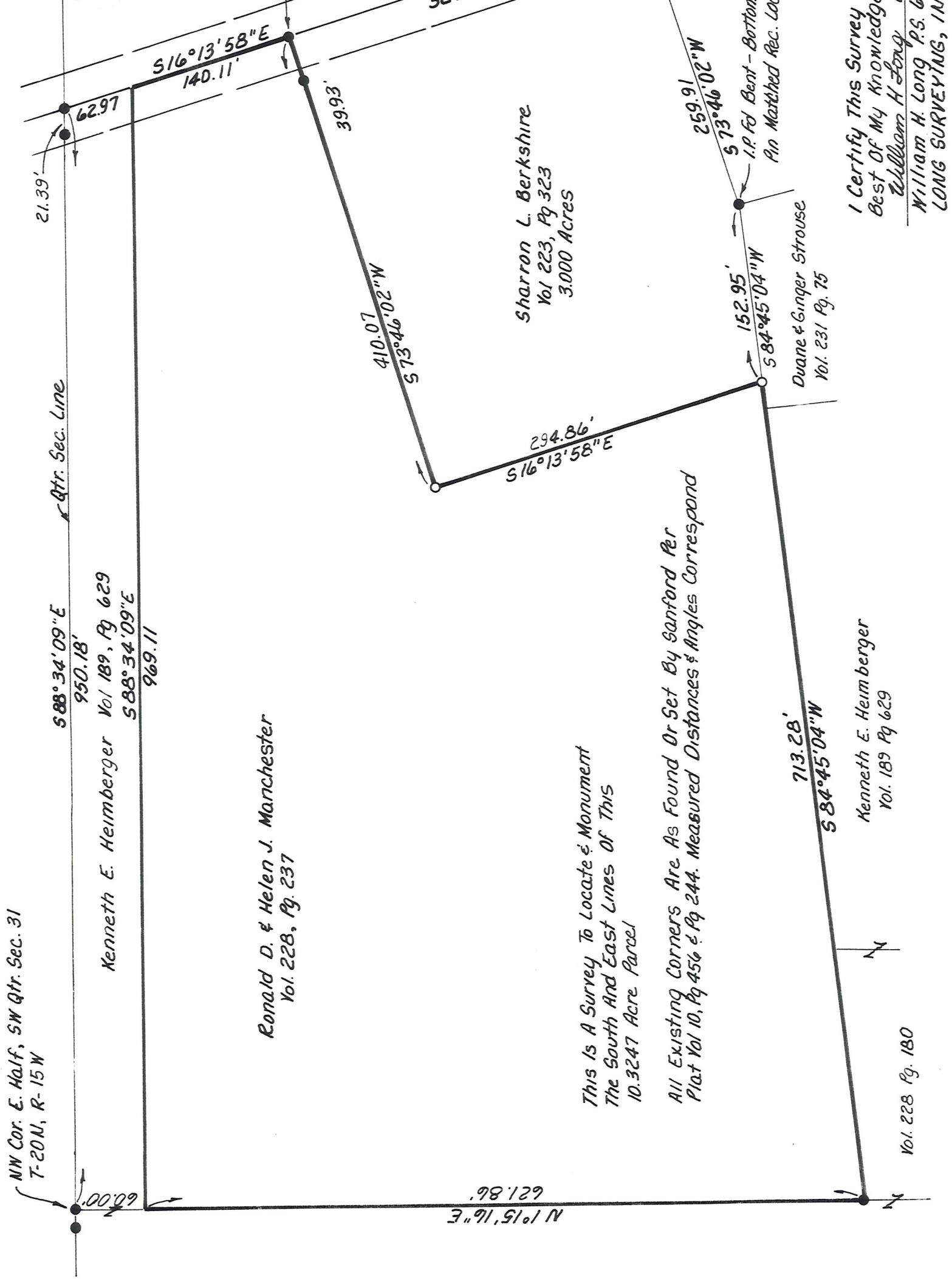


WASHINGTON TWP
 HOLMES COUNTY, OHIO
 SW Qtr. Sec. 31, T-20N, R-15W



- Iron Pipe Fd
- 5/8" x 5'-0" Rebar Set With Yellow Cap Marked "LONG-6505"



This Is A Survey To Locate & Monument
 The South And East Lines Of This
 10.3247 Acre Parcel

All Existing Corners Are As Found Or Set By Sanford Per
 Plat Vol 10, Pg 456 & Pg 244. Measured Distances & Angles Correspond

I Certify This Survey To Be Correct To The
 Best Of My Knowledge
 William H. Long, Dec. 19, 1988
 WILLIAM H. LONG P.S. 6505
 LONG SURVEYING, INC.

Vol. 228 Pg. 180