

Washington Township
 S.E. Qtr. Sec. 26
 N.E. Qtr. Sec. 35
 T-20 N; R-15 W
 Holmes County, Ohio
 SURVEYED FOR: Pam Peebles

REFERENCES:

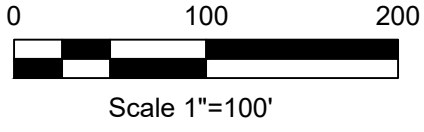
Deeds as shown
 Plat Vol. 19 Page 676 Plat Vol. 16 Page 833
 Plat Vol. 14 Page 708 Plat Vol. 18 Page 504
 Plat Vol. 16 Page 796 Plat Vol. 12 Page 931
 Plat Vol. 06 Page 59
 unrecorded plat of Correction by Jamie Darr dated April 20, 2007
 unrecorded plat of Correction by Donald C. Baker dated May 31, 1988

MASTER PLAT: The Purpose of this survey.

Action 1.) Convey 4.940 acres from Pamela S. Peebles (out of PPN 2800131000) with a 50' secondary access easement.

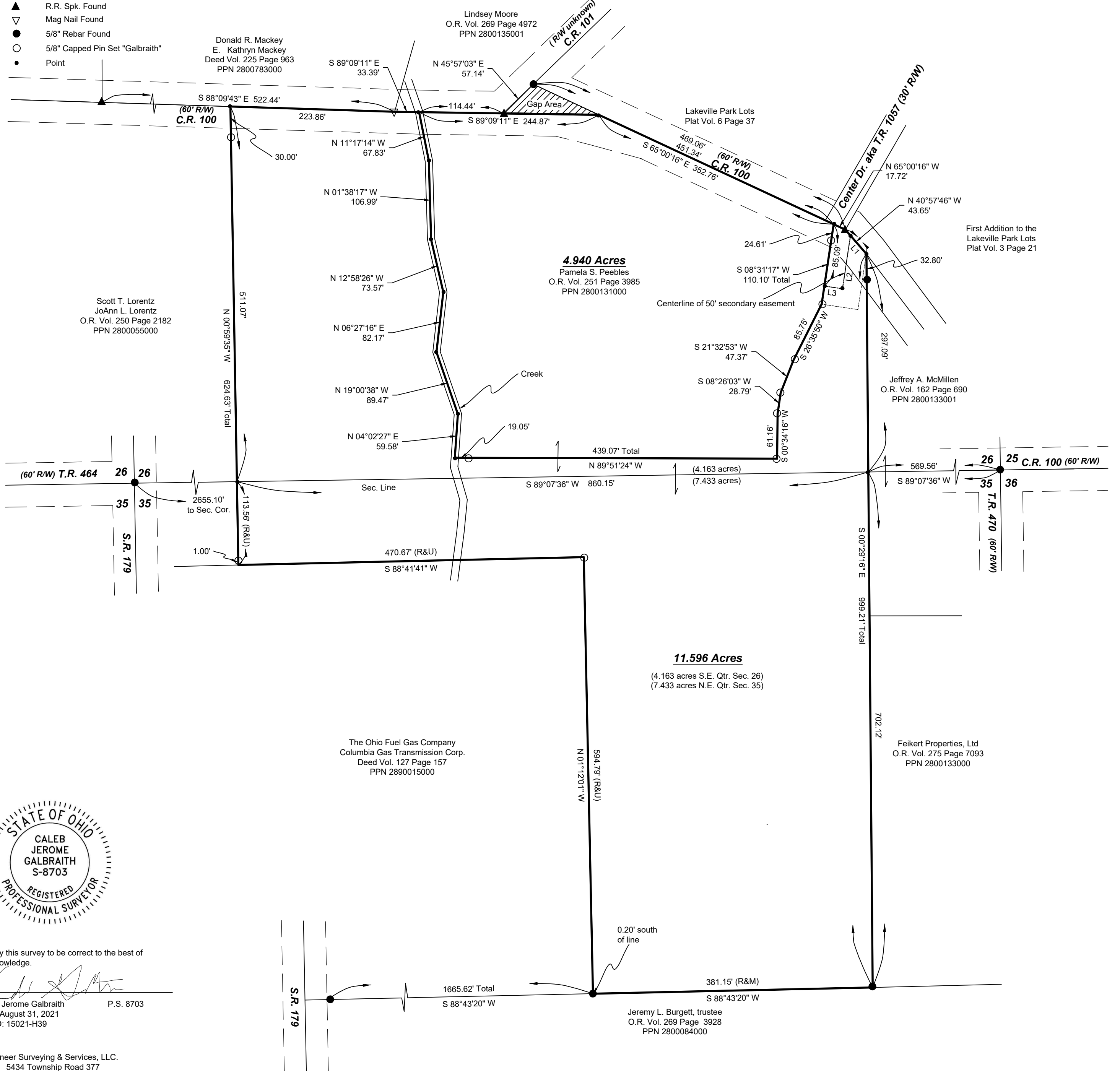
Action 2.) Convey 11.596 acre parcel from Pamela S. Peebles (balance of PPN 2800131000).

Basis of Bearing: Grid North, Ohio State Plane Coordinate System, Ohio North Zone, NAD 83.



LINE	BEARING	DISTANCE
L1	N 40°57'46" W	33.12'
L2	S 08°31'17" W	73.23'
L3	N 81°28'43" W	25.00'

- ▲ R.R. Spk. Found
- ▽ Mag Nail Found
- 5/8" Rebar Found
- 5/8" Capped Pin Set "Galbraith"
- Point



I certify this survey to be correct to the best of my knowledge.

Caleb Jerome Galbraith
 Caleb Jerome Galbraith P.S. 8703
 Date: August 31, 2021
 Job ID: 15021-H39

Pioneer Surveying & Services, LLC.
 5434 Township Road 377
 Millersburg, Ohio 44654
 Phone: 330-231-0497

Email: caleb@pioneersurveyingandservices.com

