

LAKEVIEW PARK SUBDIVISION
 PLAT VOL. 2 PAGE 3
 SUBDIVISION 2
 LOTS 45, 46, 47, 48, 59, 60 & 61

WASHINGTON TOWNSHIP
 S.W. QTR. SECTION 25
 T-20 N; R-15 W
 HOLMES COUNTY, OHIO

SURVEYED FOR: WILMER DUNCAN

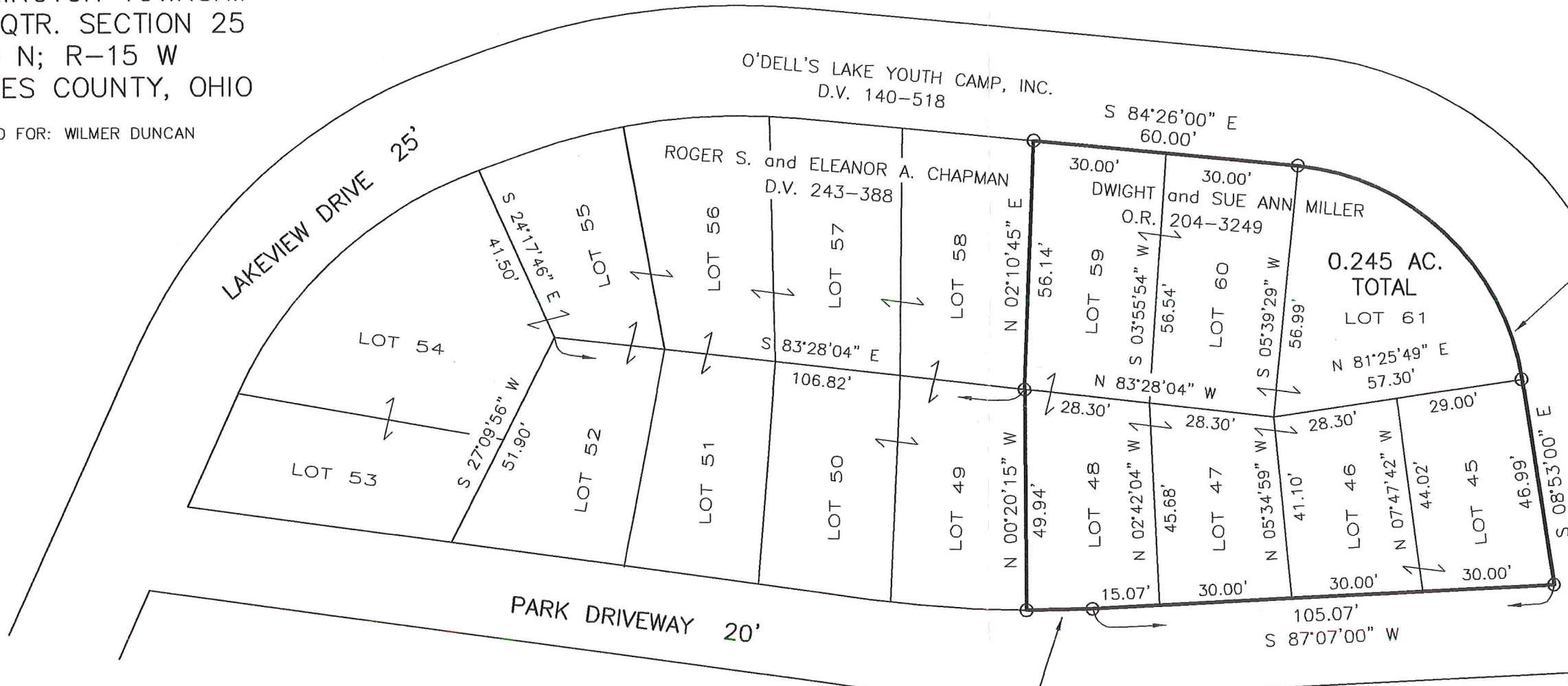
REFERENCES

DEED VOL. 140 PAGE 518
 DEED VOL. 243 PAGE 388
 O.R. VOL. 204 PAGE 3249
 PLAT VOL. 2 PAGE 3
 PLAT VOL. 13 PAGE 64
 PLAT VOL. 19 PAGE 161
 BEARINGS FROM PLAT VOL. 2 PAGE 3

ACREAGE TABLE

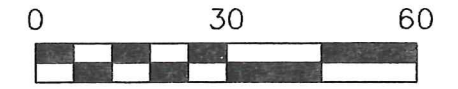
LOT 45: 0.031 ACRES
LOT 46: 0.028 ACRES
LOT 47: 0.029 ACRES
LOT 48: 0.032 ACRES
LOT 59: 0.038 ACRES
LOT 60: 0.038 ACRES
LOT 61: 0.049 ACRES

TOTAL: 0.245 ACRES



$\Delta=75^{\circ}33'01''$
 $R=57.29'$
 $L=75.55'$
 $T=44.40'$
 $C\ LEN=70.19'$
 $BRG=S\ 46^{\circ}39'30''\ E$

$\Delta=03^{\circ}13'14''$
 $R=265.61'$
 $L=14.93'$
 $T=7.47'$
 $C\ LEN=14.93'$
 $BRG=S\ 88^{\circ}43'37''\ W$



SCALE: 1"=30'

- 5/8" REBAR FOUND UNLESS OTHERWISE NOTED
- 5/8" REBAR SET WITH I.D. CAP I.D. CAP MARKED "BAKER 6938"



DONALD C. BAKER SURVEYING
 138 N. CLAY STREET
 MILLERSBURG, OHIO 44654
 PH. 330-674-4788
 FAX 330-674-6027

I CERTIFY THIS SURVEY TO BE CORRECT TO THE BEST OF MY KNOWLEDGE

JAMIE D. DARR P.S. 7755
 DATE: JAN 19, 2009
 JDD\ERZ
 FILE NAME: WORK3\S-1-09\ERZ

PRELIMINARY FOR REVIEW ONLY