

RETRACEMENT SURVEY OF D.V. 253-503  
WASHINGTON TOWNSHIP  
S.W. QTR. SECTION 16  
T-19 N; R-15 W  
HOLMES COUNTY, OHIO

SURVEYED FOR: CARL TEGEL

REFERENCES

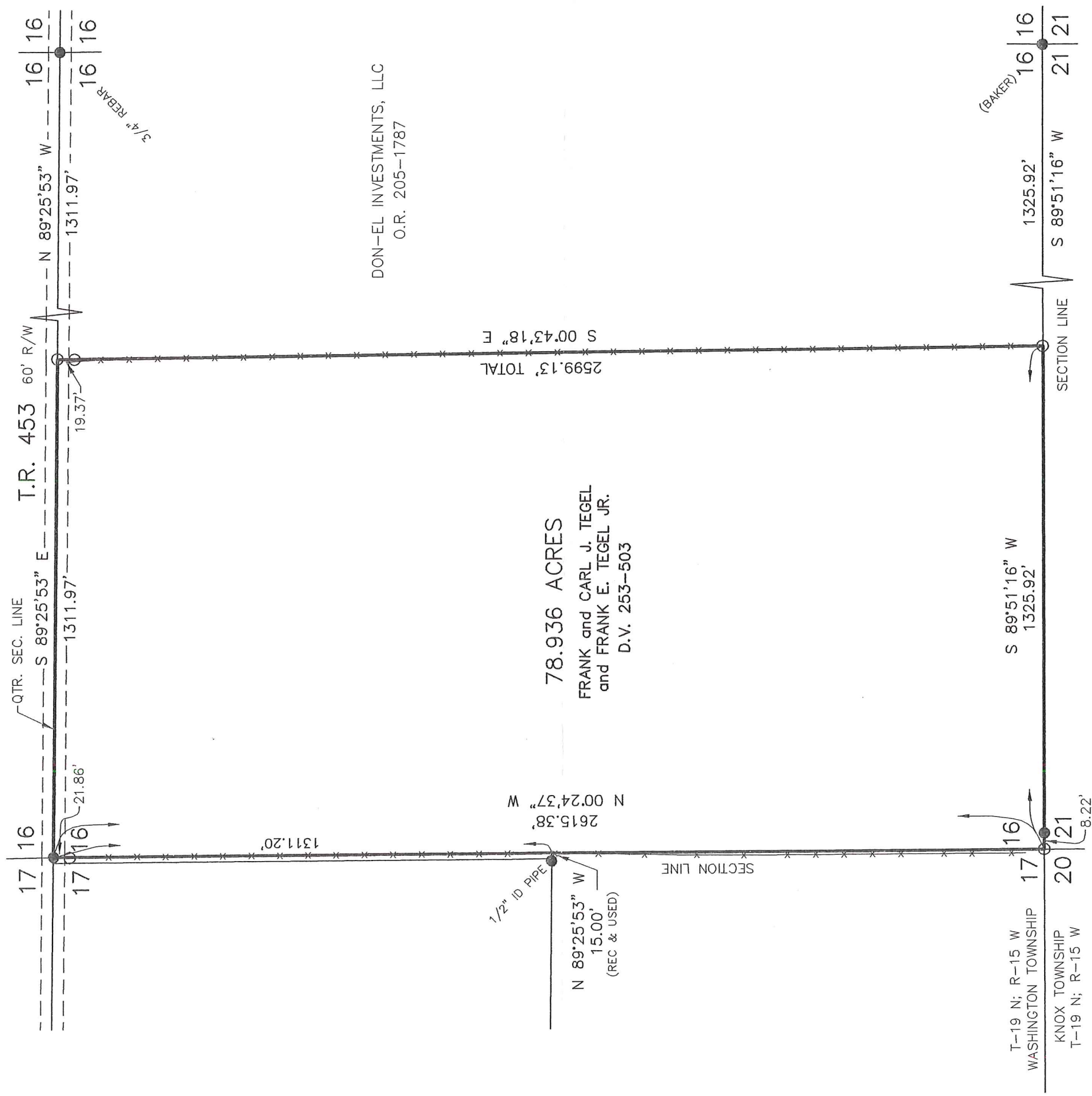
- DEED VOL. 187 PAGE 909
- DEED VOL. 253 PAGE 503
- O.R. VOL. 205 PAGE 1787
- PLAT VOL. 9 PAGE 194
- PLAT VOL. 13 PAGE 85
- PLAT VOL. 18 PAGE 220
- PLAT VOL. 19 PAGE 1337

BEARINGS FROM PLAT VOL. 19 PAGE 1337

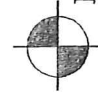


SCALE: 1"=300'

- 5/8" REBAR FOUND UNLESS OTHERWISE NOTED
- 5/8" REBAR WITH I.D. CAP SET I.D. CAP MARKED "BAKER 6938"



NOTE: THE 5/8" REBAR 8.22' FROM THE SECTION CORNER WAS ESTABLISHED AS THE SECTION CORNER IN P.V. 9-194 BY EXTENDING THE WEST LINE OF THE S.W. QUARTER OF SECTION 21 NORTH TILL IT INTERSECTED THE SOUTH LINES OF SECTIONS 16 AND 17. I RE-ESTABLISHED THE SECTION CORNER USING PHYSICAL EVIDENCE ALONG THE WEST LINE OF SECTION 16 AND THE RECORD 15.00' DISTANCE FROM THE FOUND 1/2" ID PIPE.



DONALD C. BAKER SURVEYING  
138 N. CLAY ST.  
MILLERSBURG, OHIO, 44654  
PH. 330-674-4788  
FAX. 330-674-6027

I CERTIFY THIS SURVEY TO BE CORRECT TO THE BEST OF MY KNOWLEDGE

**PRELIMINARY**

DONALD C. BAKER P.S. 6938  
DATE: SEPT 14, 2009  
EDB/CJS-ERZ-ACB  
File Name: WORK2\S-415-09\ERZ