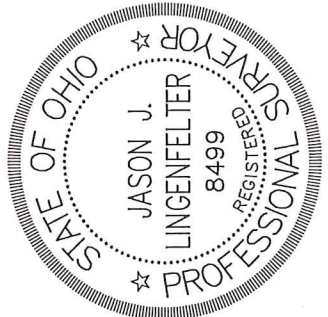
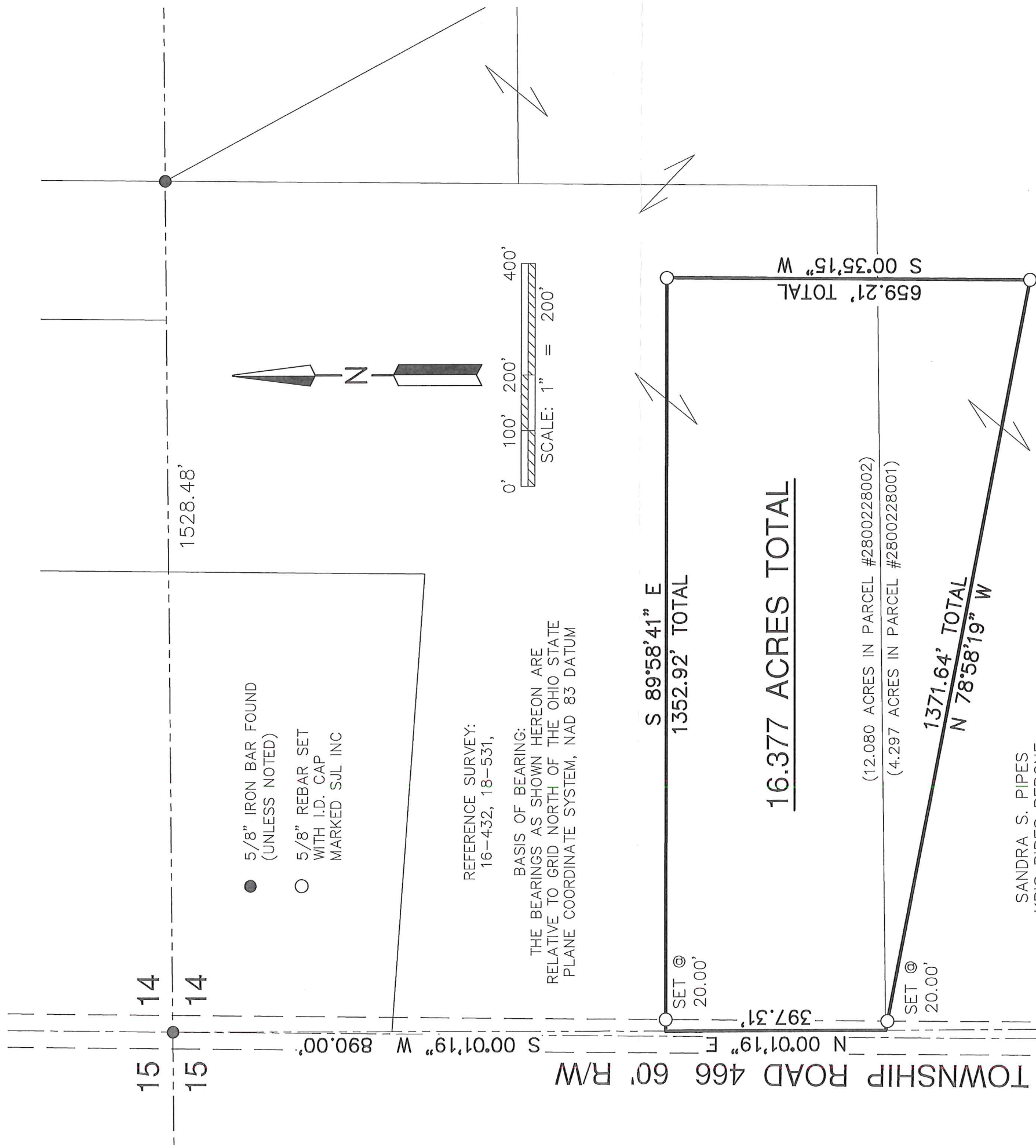


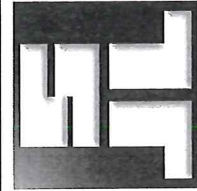
MAP OF SURVEY OF A 16.377 ACRE PARCEL

SW QUARTER OF SECTION 14
T-19-N; R-15-W
WASHINGTON TOWNSHIP
HOLMES COUNTY, OHIO



Distances shown hereon are expressed in feet and decimal parts thereof, bearings are used to express angles only, iron pins or monuments were found or set as indicated hereon. All of which I believe to be correct to the best of my knowledge.

By: *Jason J. Lingenfelter* DATE 2-15-16
JASON J. LINGENFELTER, P.S. #8499



SHAFFER, JOHNSTON, LICHTENWALTER
& ASSOCIATES, INC.
Consulting Engineers & Surveyors
909 South Main Street
Mansfield, Ohio 44907
TEL (419) 756-7302 FAX (419) 756-0867 EMAIL sjl@sj-inc.com

DRAWN JUL	CHECKED	SCALE = 200'	DATE FEB. 15, 2016
DWG NO: SM-2227		JOB NO: SM-2227	
			SHEET 1 OF 1