

Village Of Nashville
Holmes County, Ohio
Lots 107, 108, & 109

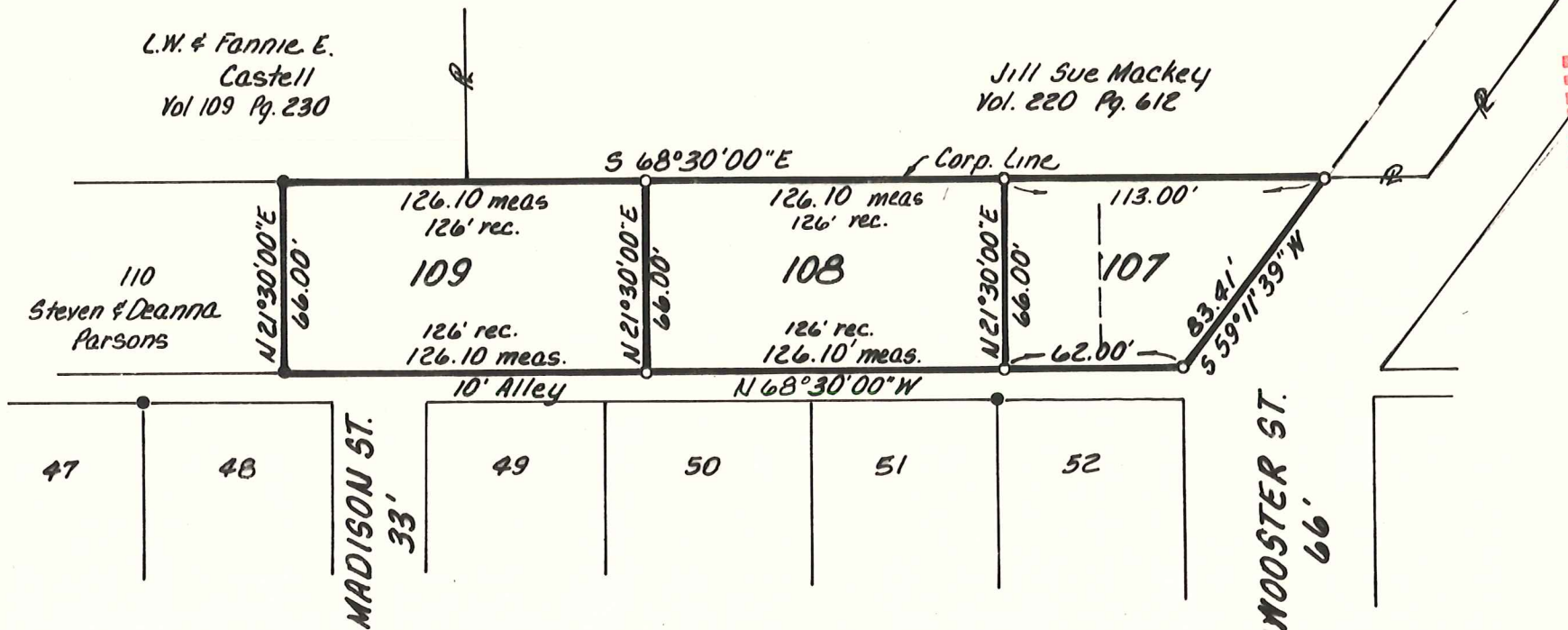
Washington Twp
SE Qtr. Sec. 13, T-19N, R-15W

0 60 120
Scale In Feet 1" = 60'

● I.P. Fd.
○ I.P. Set - 5/8" Bar With
Yellow Cap Marked "LONG-6505"

Bearings Assumed

References: P.Y. 10, Pg. 146



MAP OFFICE COPY

Surveyed For Peter & Virginia Campbell, Owners
Lot 109: Deed Vol 222, Pg. 345
Lot 108 & W. Pt 107: Vol. 225, Pg. 837
E. Pt. Lot 107: Vol. 222, Pg. 994

I Certify This Survey To Be Correct
To The Best Of My Knowledge

William H. Long Oct 31, 1986
William H. Long R.S. 6505
13301 T.R. 503
Big Prairie, Ohio 44611

