

ASHLAND COUNTY
HOLMES COUNTY

MADISON STREET 60'

N. 3° 55' 53" E. 387.80'

PROPOSED
WORKMAN
ALLOTMENT

92.50'
S. 5° 18' 46" W.

S. 84° 41' 14" E. 396.02'

10.163 ACRES

N

N. 62° 55' 53" E. 576.30'

CORPORATION LINE

S. 59° 01' 16" E. 162.65'

132.42'
N. 84° 41' 14" W.

92.00'
S. 5° 18' 46" W.

92.50'
S. 5° 18' 46" W.

S. 84° 41' 14" E. 396.02'

S. 5° 18' 46" W. 180.00'

S. 84° 41' 14" E. 25.42'

CURVE DATA

Δ = 24° 11'
T = 175.04'
R = 817.08'
L = 344.94'

60.35' S. 79° 56' 07" E.

STATE ROUTE # 39 60' R/W

CORPORATION LINE

N. 3° 55' 53" E. 210.00'

200.00'

100.00'

100.00'

120.08'

100.00'

150.00'

N. 81° 13' 07" W.

N. 81° 36' 07" W.

N. 83° 10' 07" W.

N. 83° 46' 07" W.

N. 84° 29' 07" W.

N. 84° 34' 07" W.

S. 3° 55' 53" W. 211.60'

N. 84° 41' 14" W. 422.04'

N. 60° 30' 14" W. 95.46'

P.C.

344.94'

N. 86° 23' 09" W. 1026.46'

S. 4° 00' 22" W. 1335.56'

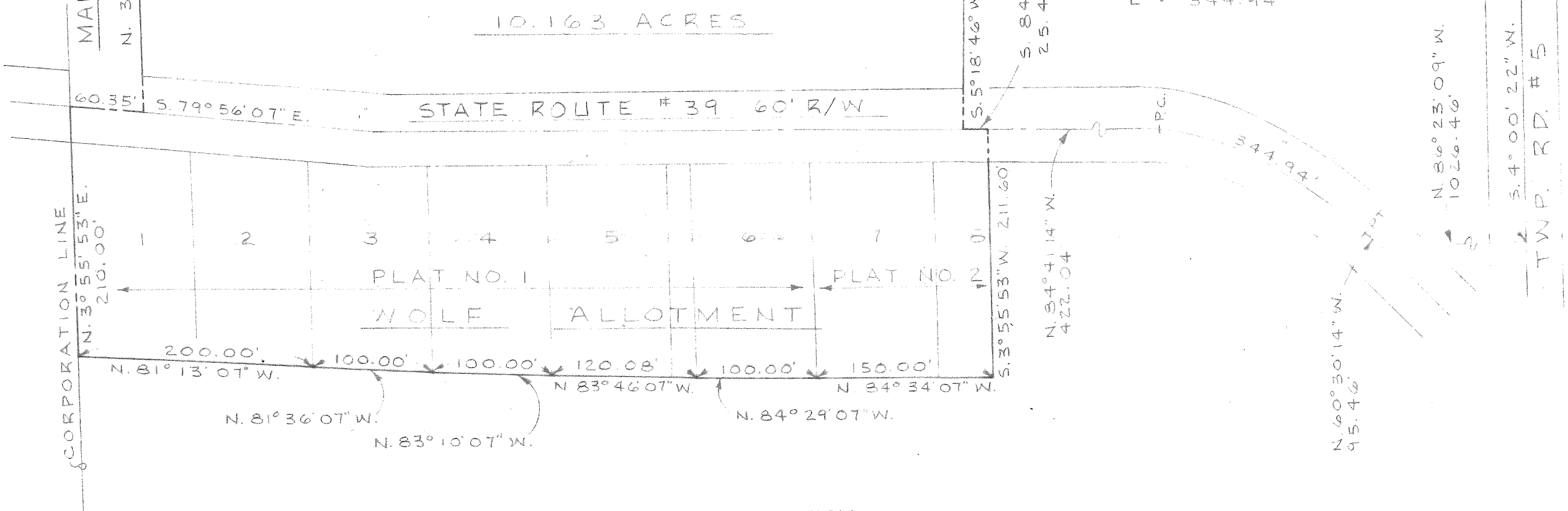
TWP. RD. # 5 60' R/W

PLAT OF TERRITORY
PROPOSED TO BE ANNEXED INTO
THE VILLAGE OF LOUDONVILLE, O.

PREPARED BY
GEORGE W. RAIKE, INC.
ASHLAND, OHIO

NORTHEAST CORNER
NORTHWEST QUARTER
SECTION 6

SEC. 31 TWP. 20 RNG. 15
SEC. 6 TWP. 19 RNG. 15



DESCRIPTION

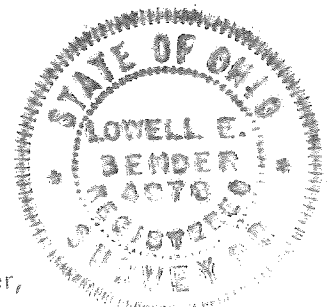
SITUATED IN the Township of Washington, County of Holmes, and State of Ohio and being a part of the Northwest quarter of Section 6, Township 19, Range 15, and more fully described as follows:

Commencing at the Northeast corner of the Northwest quarter of Section 6; thence South 4° 00' 22" West, along the East line of said quarter, a distance of 1335.56 feet to a point; thence North 86° 23' 09" West a distance of 1026.46 feet to a point on the centerline of State Route #39 (60 feet wide); thence North 60° 30' 14" West, along said centerline, a distance of 95.46 feet to a point; thence Westerly, along said centerline, following a curve to the left (R=817.08 feet), with a centerline distance of 334.94 feet to a point; thence, continuing along said centerline, North 84° 41' 14" West a distance of 422.04 feet to the true place of beginning of the parcel herein described; thence South 3° 55' 53" West a distance of 211.60 feet to a point; thence North 84° 34' 07" West a distance of 150.00 feet to a point; thence North 84° 29' 07" West a distance of 100.00 feet to a point; thence North 83° 46' 07" West a distance of 120.08 feet to a point; thence North 83° 10' 07" West a distance of 100.00 feet to a point; thence North 81° 36' 07" West a distance of 100.00 feet to a point; thence North 81° 13' 07" West a distance of 200.00 feet to a point on the existing East Corporation line of the Village of Loudonville, said line also being the West line of Holmes County; thence North 3° 55' 53" East along said line a distance of 210.00 feet to a point on the centerline of State Route #39; thence South 79° 56' 07" East, along said centerline, a distance of 60.35 feet to a point; thence North 3° 55' 53" East, along the East right-of-way line of Madison Street (60 feet wide), a distance of 387.80 feet to a point; thence North 62° 55' 53" East along said right-of-way, a distance of 576.30 feet to a point; thence South 59° 01' 16" East a distance of 162.65 feet to a point; thence South 5° 18' 46" West a distance of 92.00 feet to a point; thence North 84° 41' 14" West a distance of 132.42 feet to a point; thence South 41° 34' 35" West a distance of 344.20 feet to a point; thence South 5° 18' 46" West a distance of 92.50 feet to a point; thence South 84° 41' 14" East a distance of 396.02 feet to a point; thence South 5° 18' 46" West a distance of 180.00 feet to a point on the centerline of State Route #39; thence South 84° 41' 14" East, along said centerline, a distance of 25.42 feet to the true place of beginning, containing 10.163 Acres.

SURVEYOR'S CERTIFICATION

I hereby certify that the plat shown hereon was prepared from a survey made by the office of George W. Raike, Inc., Consulting Engineers, and Lowell E. Bender, Registered Surveyor; and from plats No. 1 and No. 2 made by Howard H. Fetzer, Registered Surveyor No. 1792, for William H. Wolf, and is a true and accurate representation of said surveys.

All bearings were computed from a magnetic bearing taken on January 8, 1964, and all distances are in feet and decimals thereof.



Lowell E. Bender
Registered Surveyor No. 4978