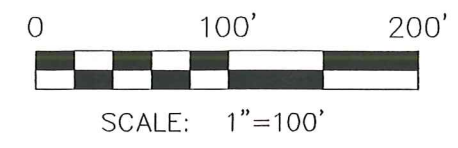


RECEIVED  
APR 09 2004  
Hol. Co. Tax Map Office

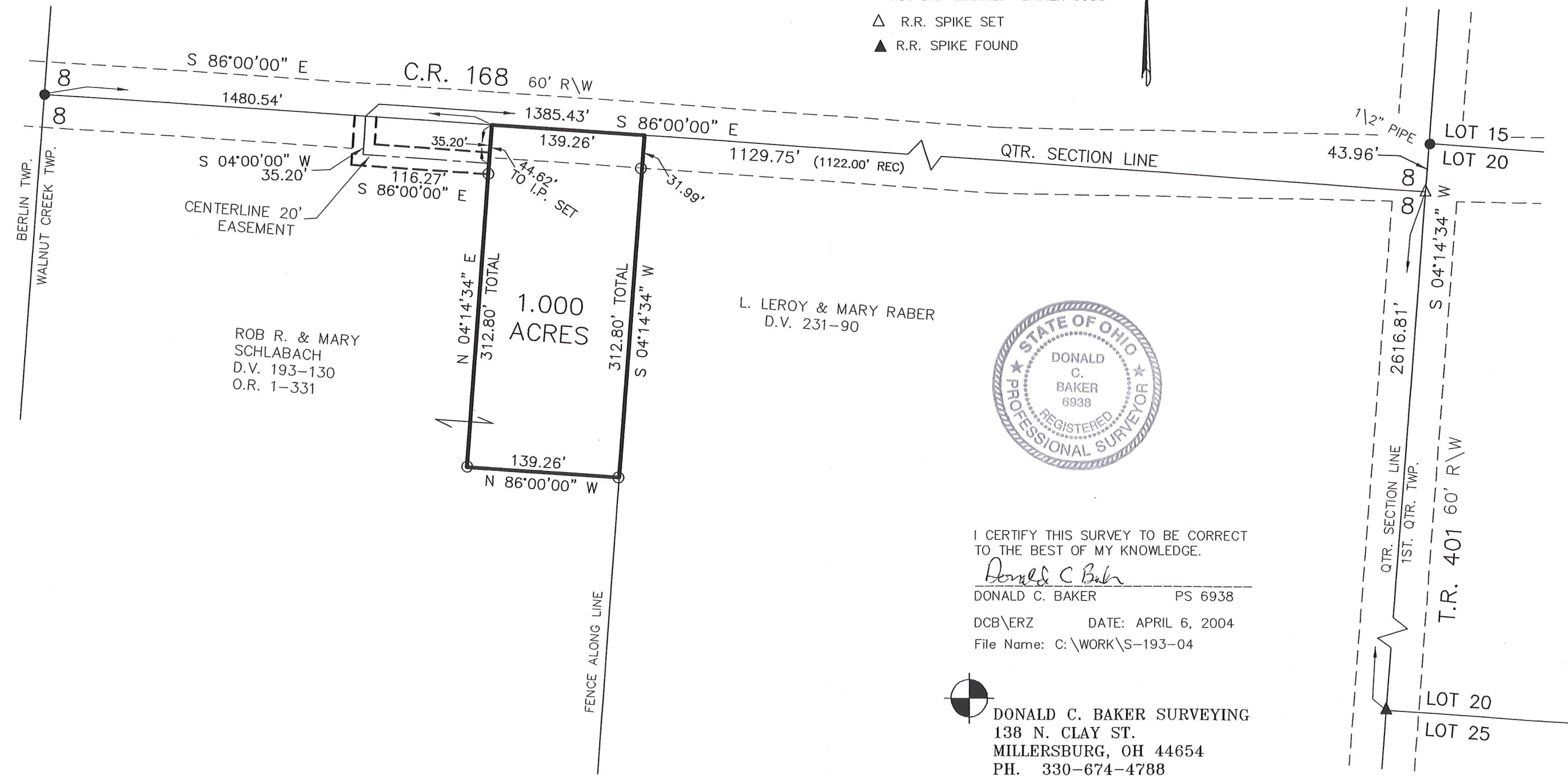


- 5/8" REBAR FOUND UNLESS OTHERWISE NOTED
- 5/8" REBAR WITH I.D. CAP SET I.D. CAP MARKED "BAKER 6938"
- △ R.R. SPIKE SET
- ▲ R.R. SPIKE FOUND

REFERENCES:  
O.R. VOL. 1 PAGE 331  
DEED VOL. 231 PAGE 90  
PLAT VOL. 14 PAGE 964  
BEARINGS FROM  
PLAT VOL. 14 PAGE 964

WALNUT CREEK TOWNSHIP  
S.W. QTR. FRACTIONAL SECTION 8  
T-9 N; R-5 W  
HOLMES COUNTY, OHIO

SURVEYED FOR: ROB SCHLABACH



● DONALD C. BAKER SURVEYING  
138 N. CLAY ST.  
MILLERSBURG, OH 44654  
PH. 330-674-4788  
FAX: 330-674-6027