

WALNUT CREEK TOWNSHIP  
 S.W. QTR. SECTION 24  
 T-9 N; R-4 W  
 HOLMES COUNTY, OHIO

SURVEYED FOR: WEAVER BARNS

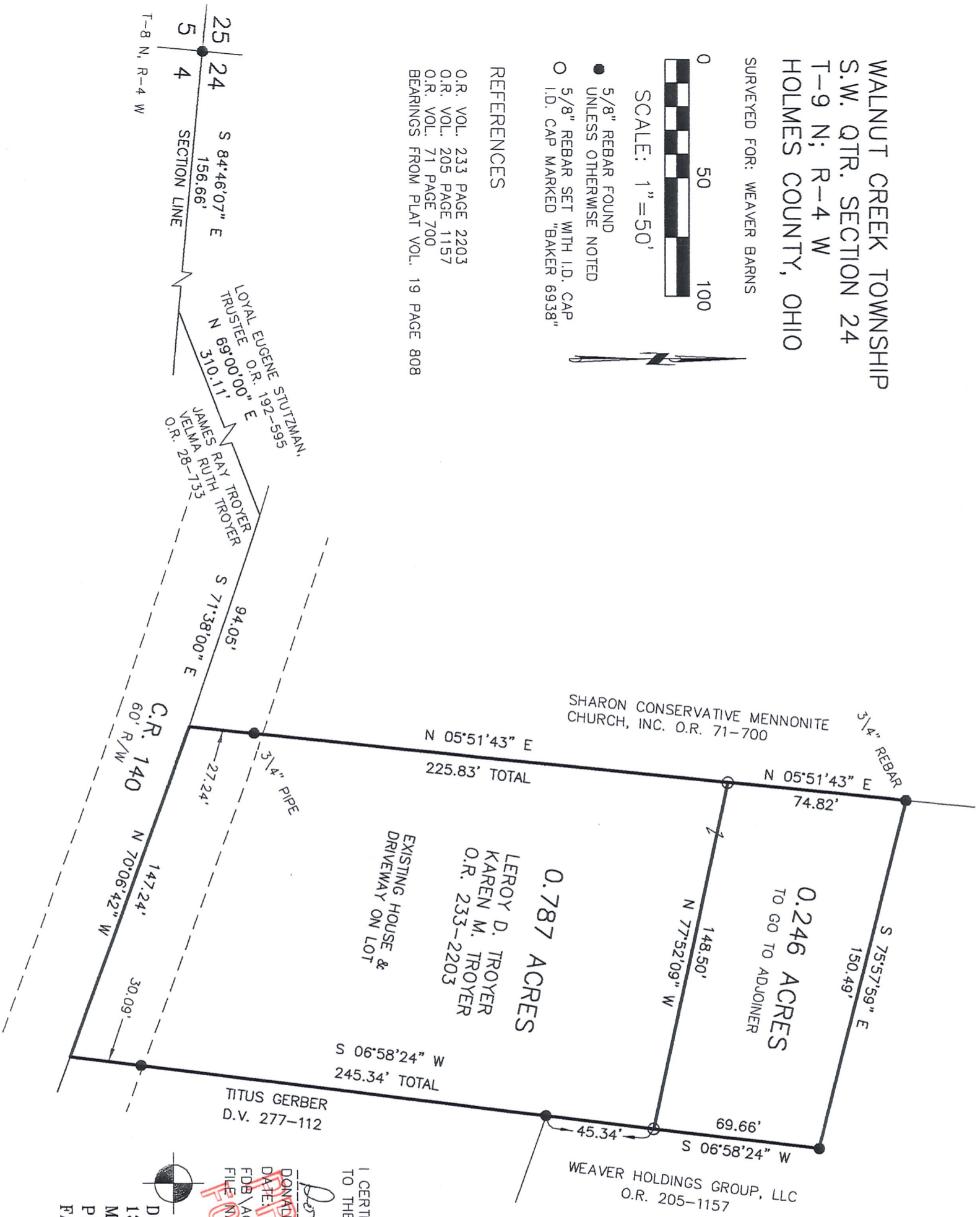


SCALE: 1" = 50'

- 5/8" REBAR FOUND  
UNLESS OTHERWISE NOTED
- 5/8" REBAR SET WITH I.D. CAP  
I.D. CAP MARKED "BAKER 6938"

REFERENCES

O.R. VOL. 233 PAGE 2203  
 O.R. VOL. 205 PAGE 1157  
 O.R. VOL. 71 PAGE 700  
 BEARINGS FROM PLAT VOL. 19 PAGE 808



JUL 18 '12 PM 4:31

I CERTIFY THIS SURVEY TO BE CORRECT  
 TO THE BEST OF MY KNOWLEDGE

*Donald C. Baker*  
 DONALD C. BAKER  
 DATE: MAY 30 2012 REVISED JULY 17, 2012  
 FDB \ACB  
 FILE NAME: WORK4\S-250-12\MLD

DONALD C. BAKER SURVEYING  
 138 N. CLAY STREET  
 MILLERSBURG, OHIO 44654  
 PH. 330-674-4788  
 FAX 330-674-6027