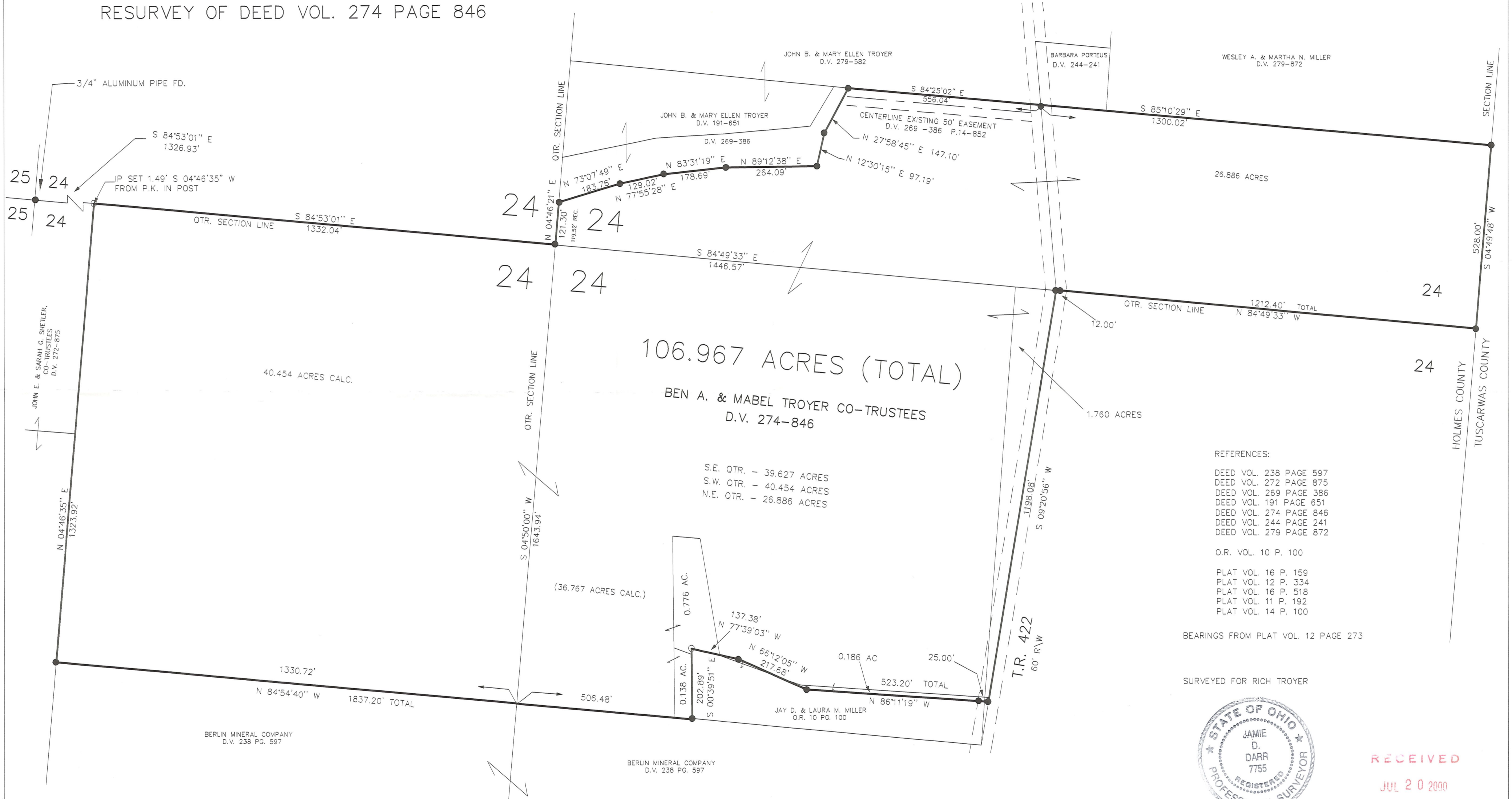


RESURVEY OF DEED VOL. 274 PAGE 846



106.967 ACRES (TOTAL)
 BEN A. & MABEL TROYER CO-TRUSTEES
 D.V. 274-846

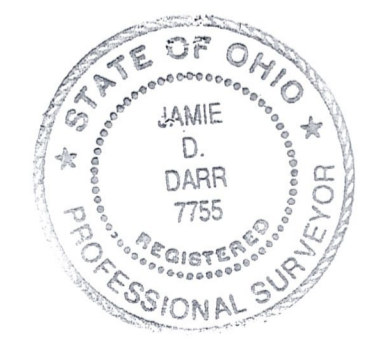
S.E. QTR. - 39.627 ACRES
 S.W. QTR. - 40.454 ACRES
 N.E. QTR. - 26.886 ACRES

- REFERENCES:
- DEED VOL. 238 PAGE 597
 - DEED VOL. 272 PAGE 875
 - DEED VOL. 269 PAGE 386
 - DEED VOL. 191 PAGE 651
 - DEED VOL. 274 PAGE 846
 - DEED VOL. 244 PAGE 241
 - DEED VOL. 279 PAGE 872

- O.R. VOL. 10 P. 100
 PLAT VOL. 16 P. 159
 PLAT VOL. 12 P. 334
 PLAT VOL. 16 P. 518
 PLAT VOL. 11 P. 192
 PLAT VOL. 14 P. 100

BEARINGS FROM PLAT VOL. 12 PAGE 273

SURVEYED FOR RICH TROYER



RECEIVED
 JUL 20 2000
 Hol. Co. Tax Map Office

I CERTIFY THIS SURVEY TO BE CORRECT TO THE BEST OF MY KNOWLEDGE.

Jamie D. Darr
 JAMIE D. DARR PS 7755
 DATE: JULY 11, 2000

<ul style="list-style-type: none"> ● IRON PIN FOUND ○ 5/8" REBAR WITH I.D. CAP SET, I.D. CAP MARKED "BAKER 6938" 	WALNUT CREEK TWP N.E. QTR. SECTION 24 S.W. QTR. SECTION 24 S.E. QTR. SECTION 24 T-9 N; R-4 W HOLMES COUNTY, OHIO
DONALD C. BAKER SURVEYING 138 N. CLAY ST. MILLERSBURG, OHIO 44654 PH. 330-674-4788 FAX 330-674-6027	<p>Scale 1" = 200'</p>