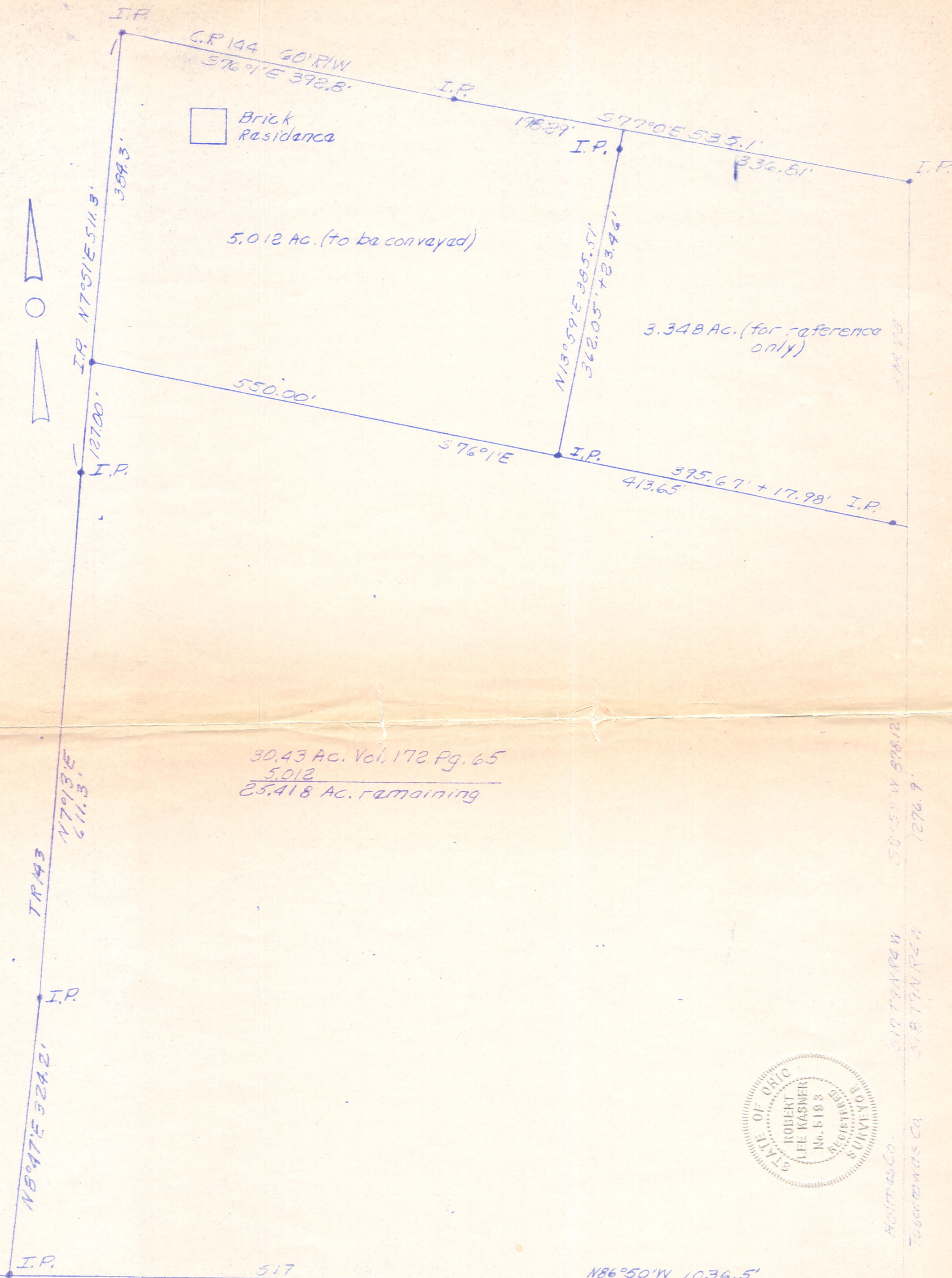


Wasteland Reclamation

Wasteland Reclamation



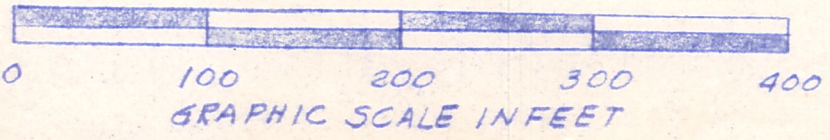
Brick Residence

5.012 Ac. (to be conveyed)

3.348 Ac. (for reference only)

30.43 Ac. Vol. 172 Pg. 65
 5.012

 25.418 Ac. remaining



ELI W. RABER (Grantor)
 Part of SE 1/4 S 17 T 9 N R 4 W
 Walnutcreek Twp., Hol. Co., Ohio
 Robert L. Kasner P.S. 5193

Holtz Co. 517 T 9 N R 4 W 58° 58' W 878.12
 Tuscarawas Co 518 T 9 N R 2 W 1276.9'