

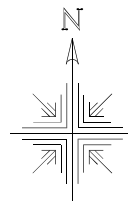
Walnut Creek Township
N.W. Qtr. Section 16
T-9 N; R-4 W
Holmes County, Ohio

SURVEYED FOR: Andrew Coblentz

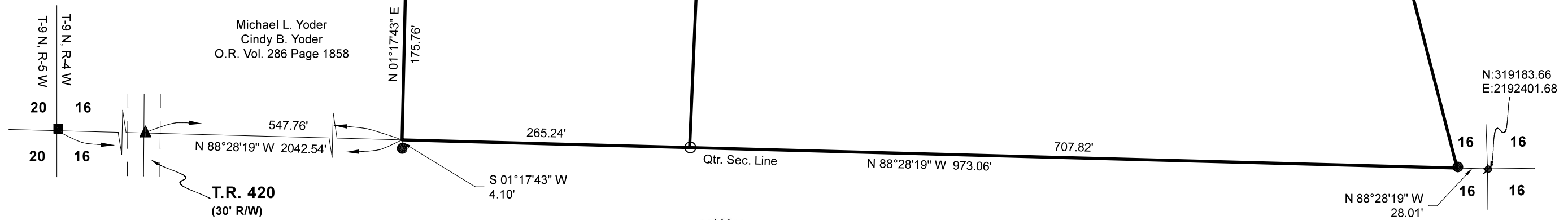
REFERENCES:
 Deeds as shown

- Plat Vol. 19 Page 3472
- Plat Vol. 09 Page 118
- Plat Vol. 08 Page 542
- Plat Vol. 08 Page 606
- Plat Vol. 08 Page 707
- Plat Vol. 19 Page 4657
- Plat Vol. 16 Page 815
- Plat Vol. 18 Page 394
- Plat Vol. 19 Page 1479

Basis of Bearing are from Grid North, Ohio State Plane Coordinate System, North Zone, NAD 83 (2011). All distances shown hereon are ground distances. To obtain grid distance multiply the distances by a scale factor of 0.99938827.



Scale 1"=100'



MASTER PLAT: The Purpose of this survey.

Action 1.) Convey 5.000 acres.

Action 2.) Convey 8.857 acres.

- ⊗ Pipe Found
- ▲ RR Spk. Found
- 5/8" Rebar Found unless noted
- Stone Found
- 5/8" Capped Pin Set "Galbraith-8703"
- Point

John H. Hershberger
 Esta M. Hershberger
 O.R. Vol. 276 Page 5341

8.857 Acres

Andrew R. Coblentz
 Mary Ellen Coblentz
 O.R. Vol. 195 Page 478
 PPN 2601287000

5.000 Acres

Jonathon J. Miller
 Mabel O. Miller
 O.R. Vol. 295 Page 5942

Walnut Valley School
 (Amish Parochial School)
 O.R. Vol. 13 Page 728

Michael L. Yoder
 Cindy B. Yoder
 O.R. Vol. 286 Page 1858

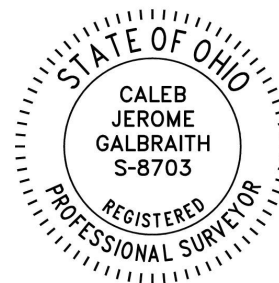
Julia M. Troyer
 O.R. Vol. 113 Page 312

John Christian Chupp
 Rhoda A. Chupp
 O.R. Vol. 284 Page 5817

N:319183.66
 E:2192401.68

I certify this survey to be correct to the best of my knowledge.

Caleb Jerome Galbraith P.S. 8703
 Date: April 15, 2026
 Job ID: 9126



Pioneer Surveying & Services, LLC.
 5434 Township Road 377
 Millersburg, Ohio 44654
 Phone: 330-231-0497
 Email: caleb@pioneersurveyingandservices.com