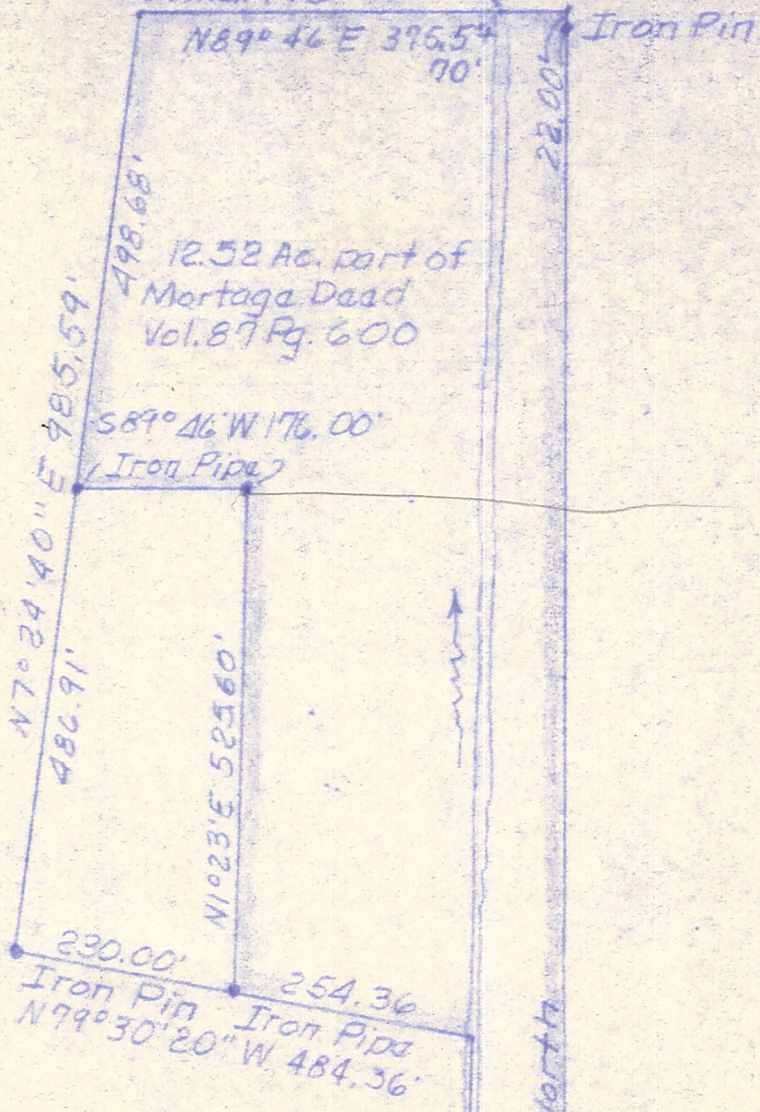


Structure on Co. Rd. 172
over Walnut Creek
Co. Rd. 172

NE corner N.W. 1/4
S14, T9N, R4W



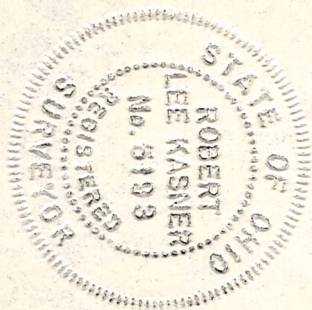
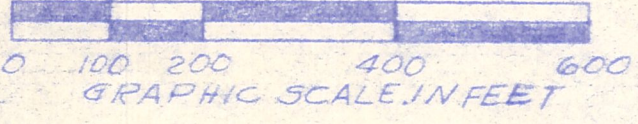
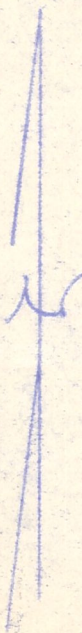
12.52 Ac. part of
Mortgage Deed
Vol. 87 Pg. 600

S89°46'W 176.00'
(Iron Pipe)

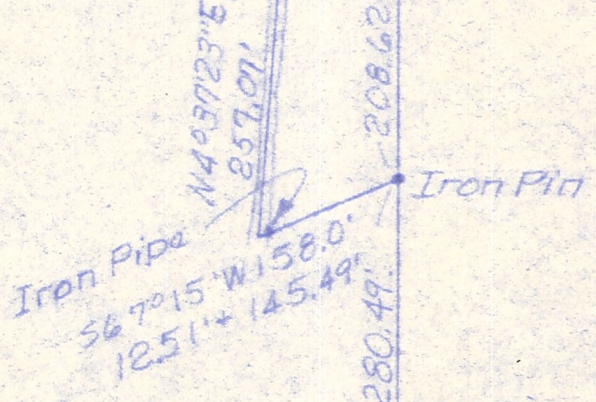
N7°24'40\"/>

N1°23'E 525.60'

230.00' Iron Pin
N79°30'20\"/>



Structure over Walnut
Creek on private land



S.E. corner N.W. 1/4
S14, T9N, R4W

PLAT OF A SURVEY FOR
IVAN TROYER
Situated in Walnutcreek Twp., Holmes
Co., Ohio. Known as part of N.W. 1/4
S14, T9N, R4W
Robert L. Kasner, Reg. Surv. #5193

MAP OFFICE COPY