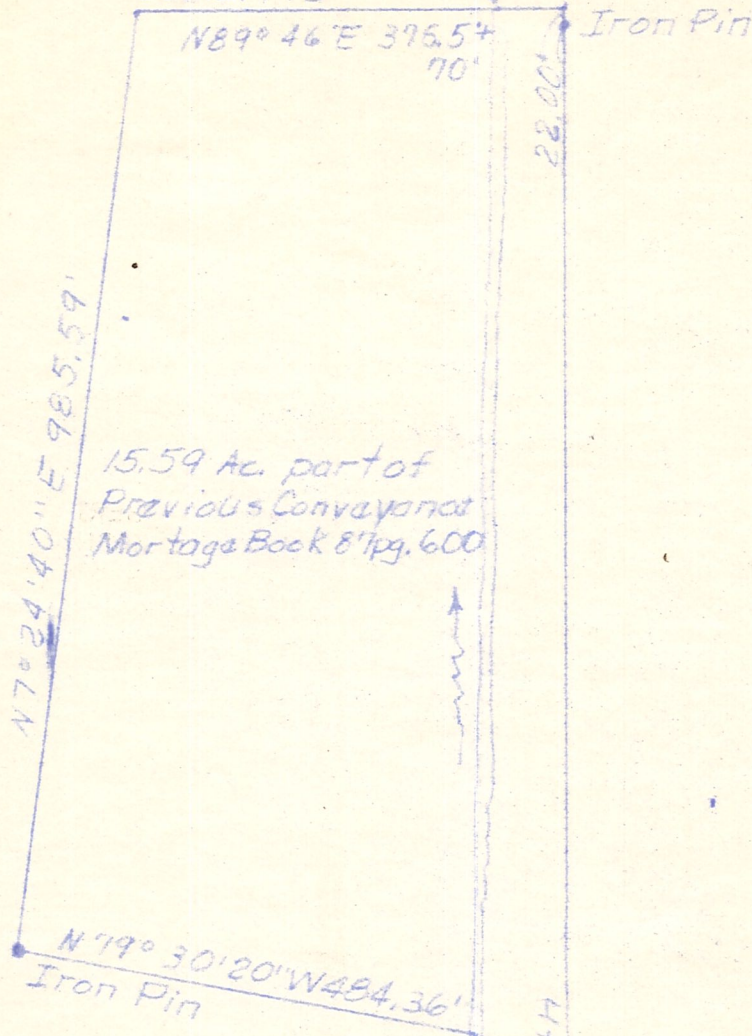
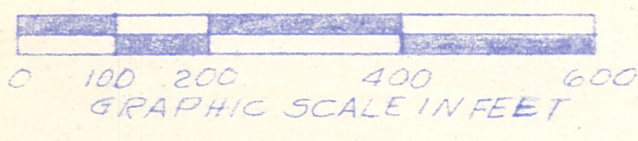
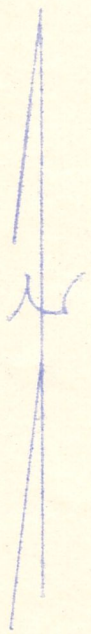


Structure on Co. Rd. 172
over Walnut Creek
Co. Rd. 172

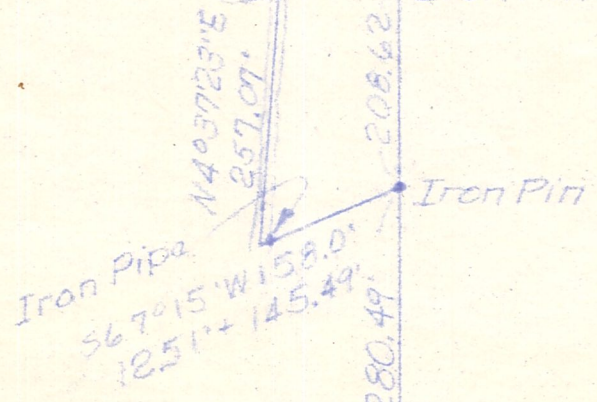
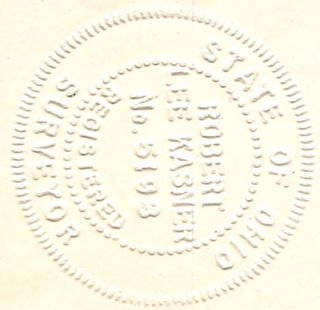
NE corner N.W. 1/4
S14, T9N, R4W



15.59 Ac. part of
Previous Conveyance
Mortgage Book 8 pg. 600



Structure over Walnut
Creek on private land



S.E. corner N.W. 1/4
S14, T9N, R4W

PLAT OF A SURVEY FOR
IVAN TROYER
Situated in Walnutcreek Twp., Holmes
Co., Ohio. Known as part of N.W. 1/4
S14, T9N, R4W
Robert L. Kasner, Reg. Surv. #5193

MAP OFFICE COPY