

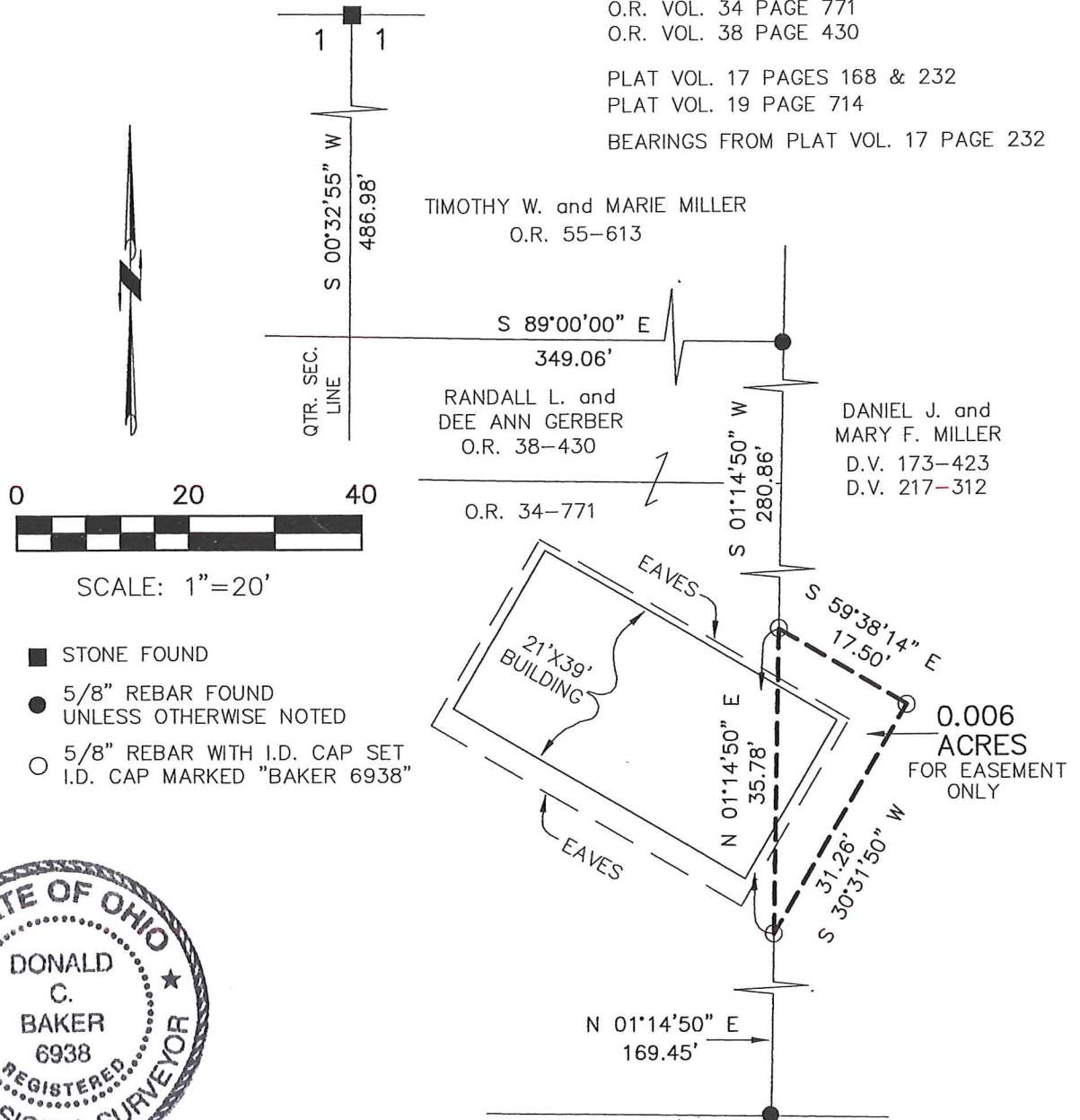
EASEMENT SURVEY  
 WALNUT CREEK TOWNSHIP  
 N.E. QTR. SECTION 1  
 T-8 N; R-5 W  
 HOLMES COUNTY, OHIO

AUG 2 '07 AM 9:18

SURVEYED FOR: BOB SCHLABACH

REFERENCES

- DEED VOL. 217 PAGE 312
- O.R. VOL. 34 PAGE 771
- O.R. VOL. 38 PAGE 430
- PLAT VOL. 17 PAGES 168 & 232
- PLAT VOL. 19 PAGE 714
- BEARINGS FROM PLAT VOL. 17 PAGE 232



I CERTIFY THIS SURVEY TO BE CORRECT  
 TO THE BEST OF MY KNOWLEDGE.

*Donald C. Baker*

DONALD C. BAKER P.S. 6938  
 DATE: JULY 26, 2007

FDB\DB  
 File Name: WORK2\S-481-07\ERZ



DONALD C. BAKER SURVEYING  
 138 N. CLAY ST.  
 MILLERSBURG, OHIO, 44654  
 PH. 330-674-4788  
 FAX. 330-674-6027