

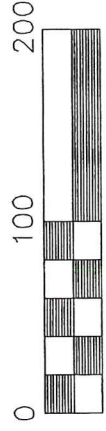
**SALT CREEK TOWNSHIP**  
**N.W. QTR. SECTION 1**  
**T-14 N; R-12 W**  
**S.W. QTR. SECTION 36**  
**T-15 N; R-12 W**  
**HOLMES COUNTY, OHIO**

**REFERENCES:**

O.R. VOL. 25 PAGE 593  
 O.R. VOL. 101 PAGE 370  
 O.R. VOL. 140 PAGE 714  
 PLAT VOL. 18 PAGE 482  
 PLAT VOL. 2 PAGE 261

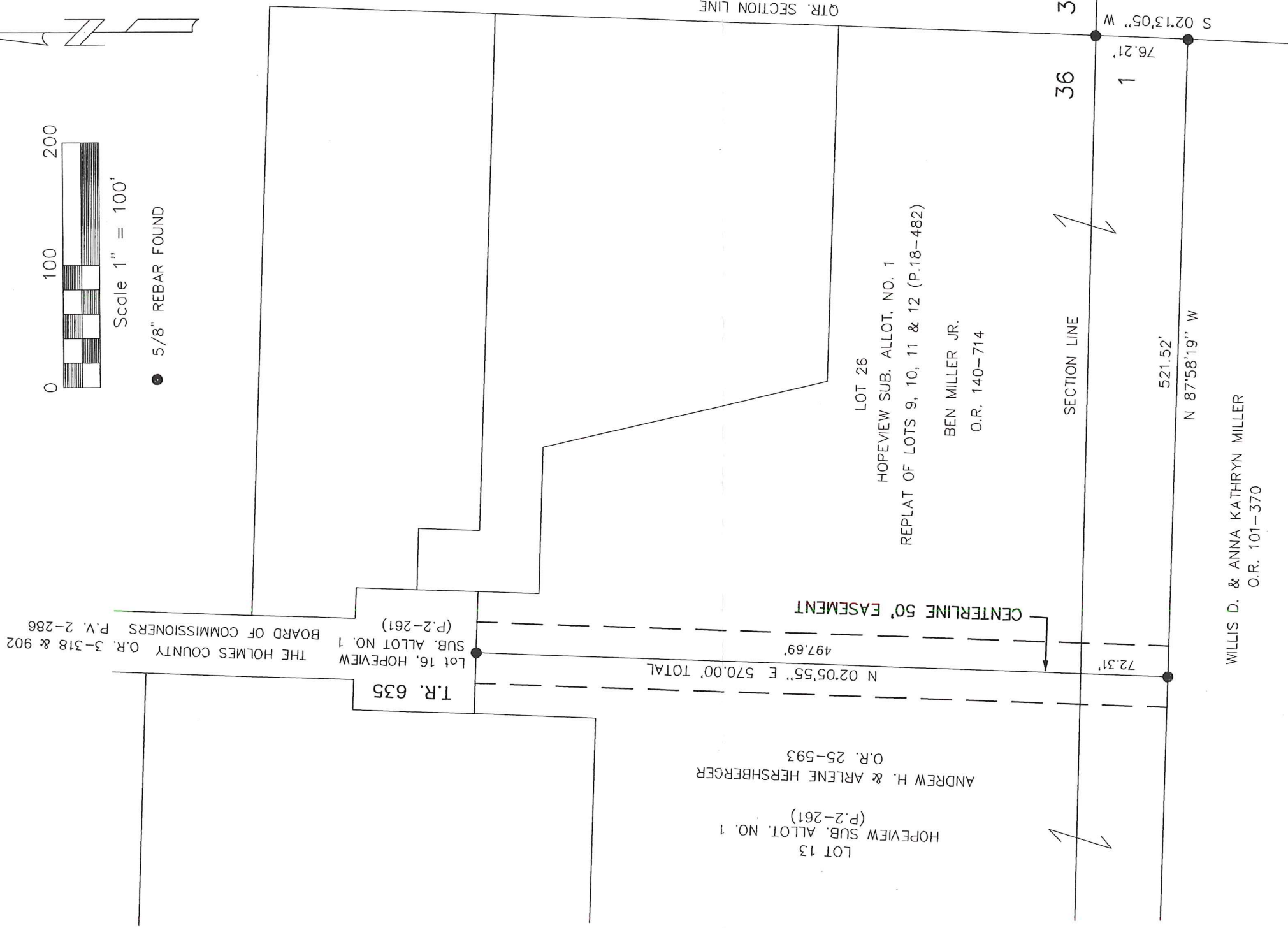
BEARINGS FROM PLAT VOL. 2 PAGE 261

SURVEYED FOR: WILLIS MILLER



Scale 1" = 100'

● 5/8" REBAR FOUND



**DONALD C. BAKER SURVEYING**  
 138 N. CLAY ST.  
 MILLERSBURG, OHIO 44654  
 PH. 330-674-4788  
 FAX 330-674-6027

I CERTIFY THIS SURVEY TO BE CORRECT TO THE BEST OF MY KNOWLEDGE.

*Donald C. Baker*  
 DONALD C. BAKER P.S. 6938

SEPTEMBER 23, 2003 FDB/AEG  
 File Name: C:\JOBS1\S-771-03\MLD

**RECEIVED**  
**OCT 01 2003**  
*Hol. Co. Tax Map Office*