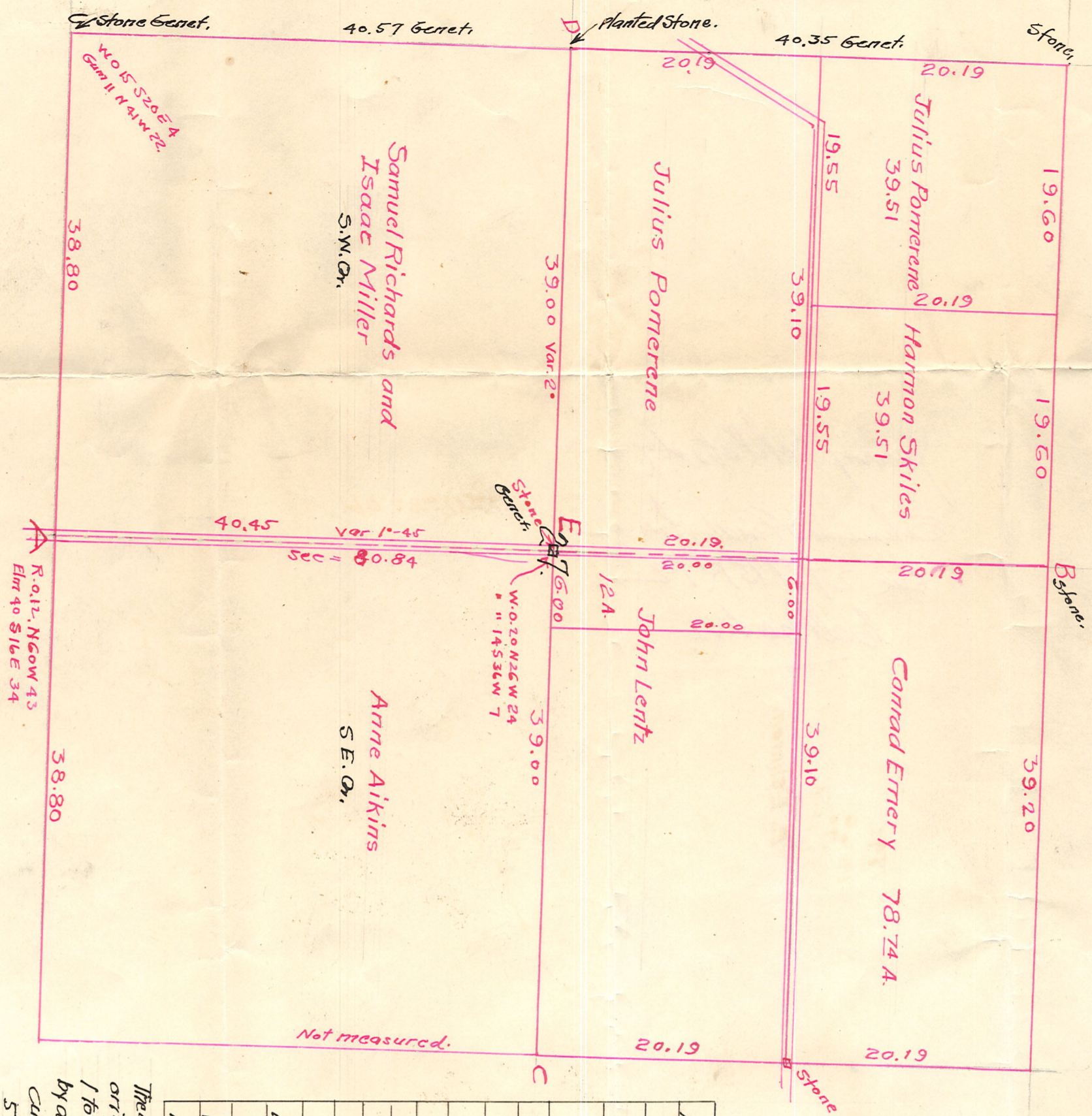


SEC. 27. Mch. 24-1831 Tp. 15, R. 12. Vol 5-145

Note - This corner established by Legal Survey Jan. 5, 1893 to Jan 24, 1893

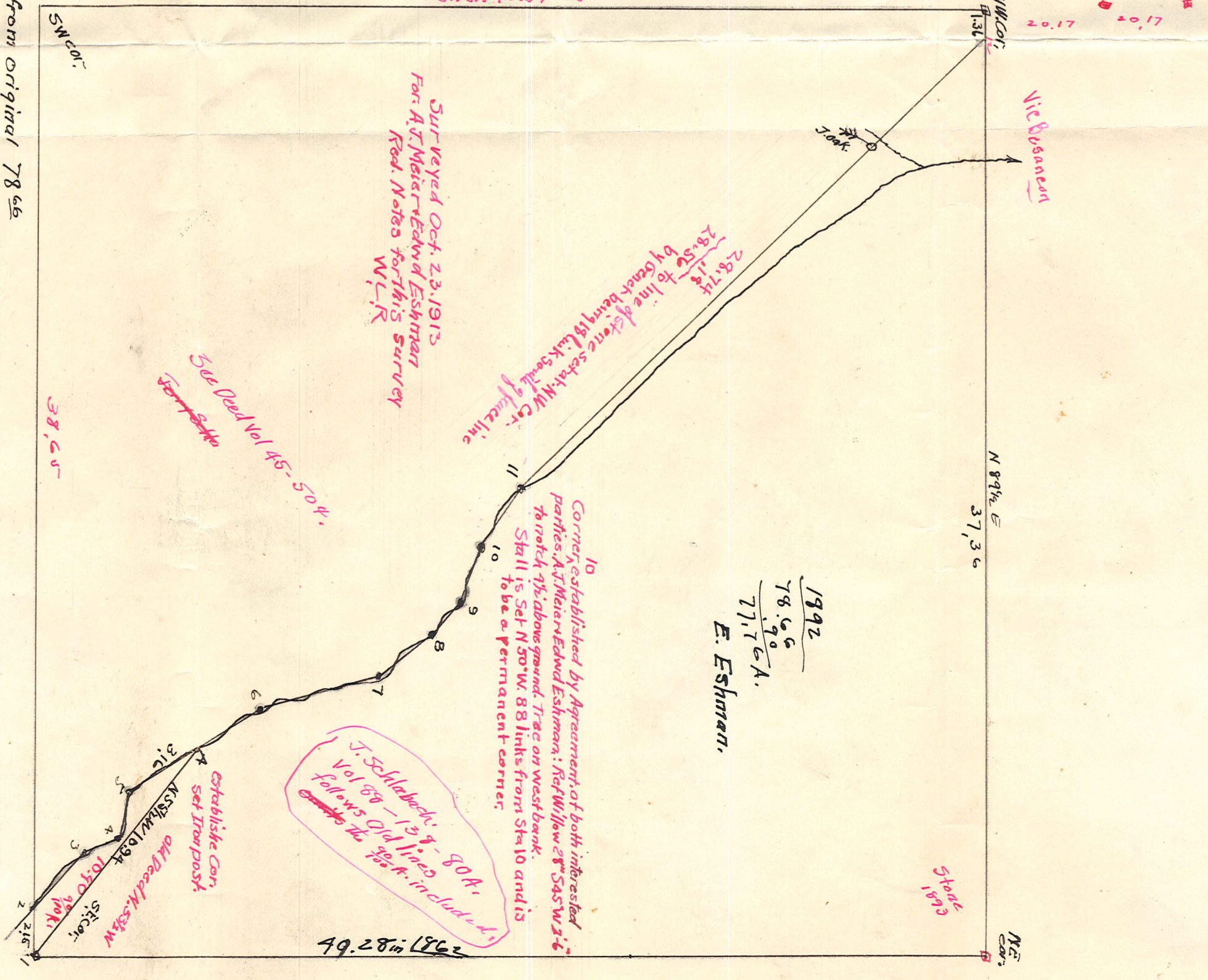


Notes of Sam Robinson  
May 1<sup>st</sup> 1862.  
Vol. 3 P-326.

1. S 89 1/2 W	2 15
2. N 45 1/2 W	3 25
3. N 2 1/2 W	1 57
4. N 83 1/2 W	2 06
5. N 33 1/2 W	6 50
6. N 15 W	5 10
7. N 44 1/2 W	3 00
8. N 48 W	1 83
9. N 72 W	2 50
10. N 60 3/4 W	3 20
11. N 40 3/4 W	27 33
12. N 87 1/2 E	37 36
13. S 9 1/4 E	40 28

The above is a correct Plat of the original survey except the line 1 to A bearing N 55 1/2 W - 10.94 by a subsequent survey

Cutting off 1-2-3-4-5 A-1 from original 78 66 5 to A is 316 cont. 99/100 A. Resurveyed the Above for Edward Eshman Mch 17, 1892. F. Genet. Co. Surveyor.



J. Schlabach's 13 1/2 - 80 A. follows old line 28 ft. included.

Corner established by Agreement of both interested parties, A. J. Meier & Edward Eshman: Red Willow 28th SASW 2 1/2 Stall is set N 50 W. 88 links from Sta 10 and is to be a permanent corner.

Surveyed Oct. 23, 1913 For A. J. Meier & Edward Eshman Red. Notes for this survey W. L. R.

See Red Vol 45-50 1/4

SW Cor.

NW Cor.

N 89 1/2 E 37,36

NE Cor.

Vol. 3-381 3-378 Legal survey

Genet. 40.57 in 1893 Vol. 3-378 cont. Cor.