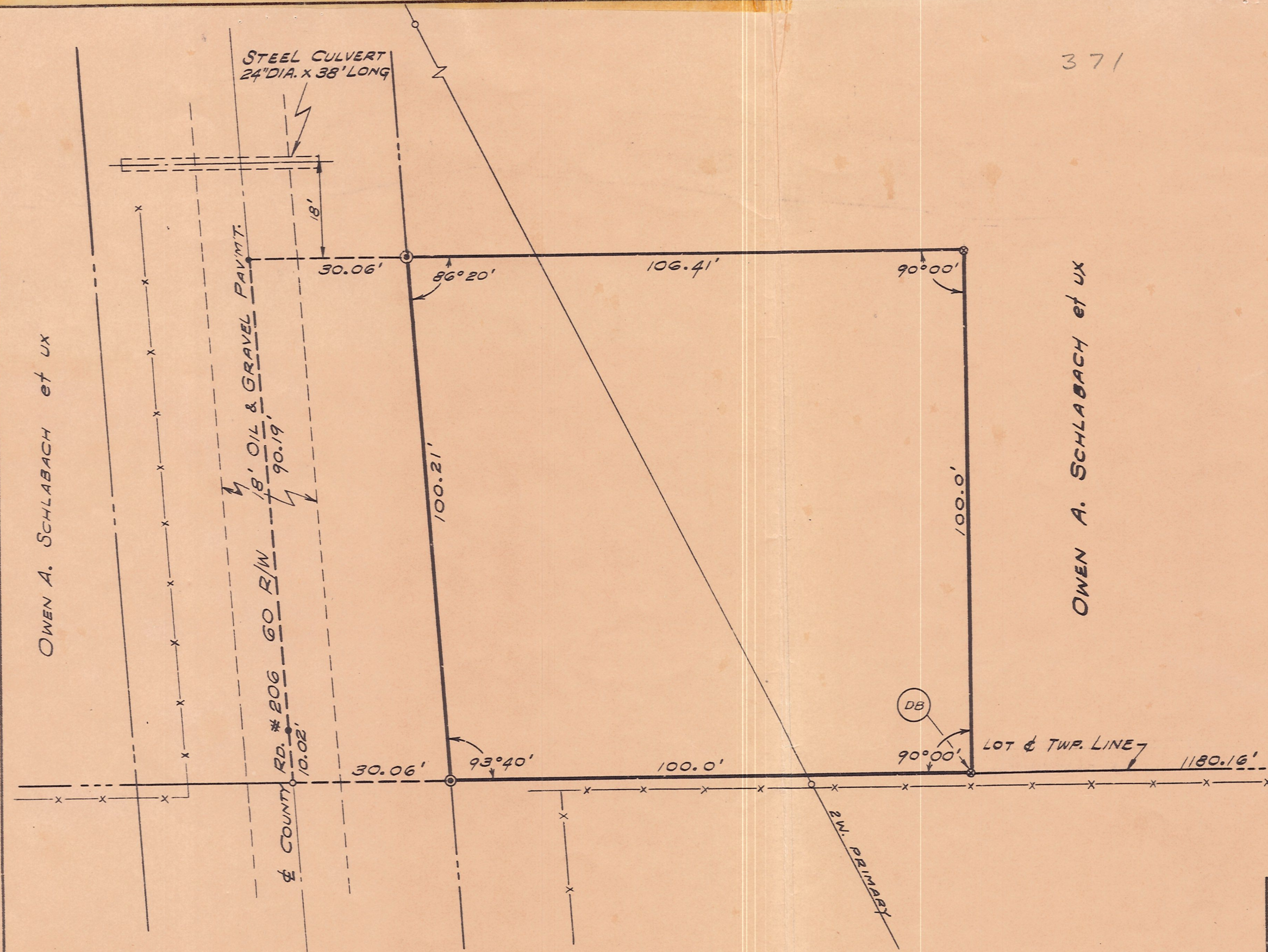


371



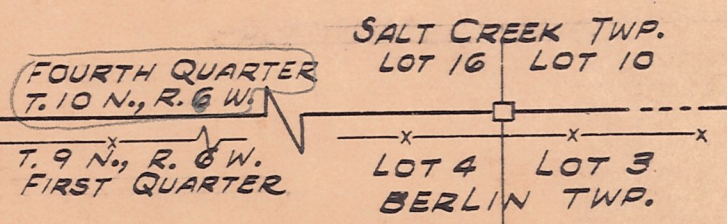
STATE OF OHIO  
HOLMES COUNTY  
LOT 16  
FOURTH QUARTER  
T. 10 N., R. 16 W.  
U.S. MILITARY SURVEY



OWEN A. SCHLABBACH et ux

OWEN A. SCHLABBACH et ux

FLETCHER A. BOYD et al



OHIO POWER CO.		
PLAT BENTON STATION SITE		
SCALE	1" = 20'	DATE 4-13-55
DRAWN	DHS	CHECKED E.C.F.
TRACED	DHS	DRAWER 1
APPROVED	<i>W. M. Riddick</i>	
1-129		

- (DB) DEED BEGINNING
- STANDARD MONUMENT
- ⊙ 3/4" IRON "T" ROD
- STONE
- CORNER UNMARKED

DEED NO. 0.31 AC.  
SURVEYED APR. 6, 1955 F.B. #2367 PG. 13 TO 17 INCL.