

SET REBAR ON NORTH SIDE
OF STONE FOR REF.

M. & M. NISLY
175-144

MYRTLE E. SCOTT
DEED VOL. 225 PAGE 796 5 AC.
HOUSE & BLDGS. ON LOT

3.046 ACRES

1.980 AC.

1.066 AC.

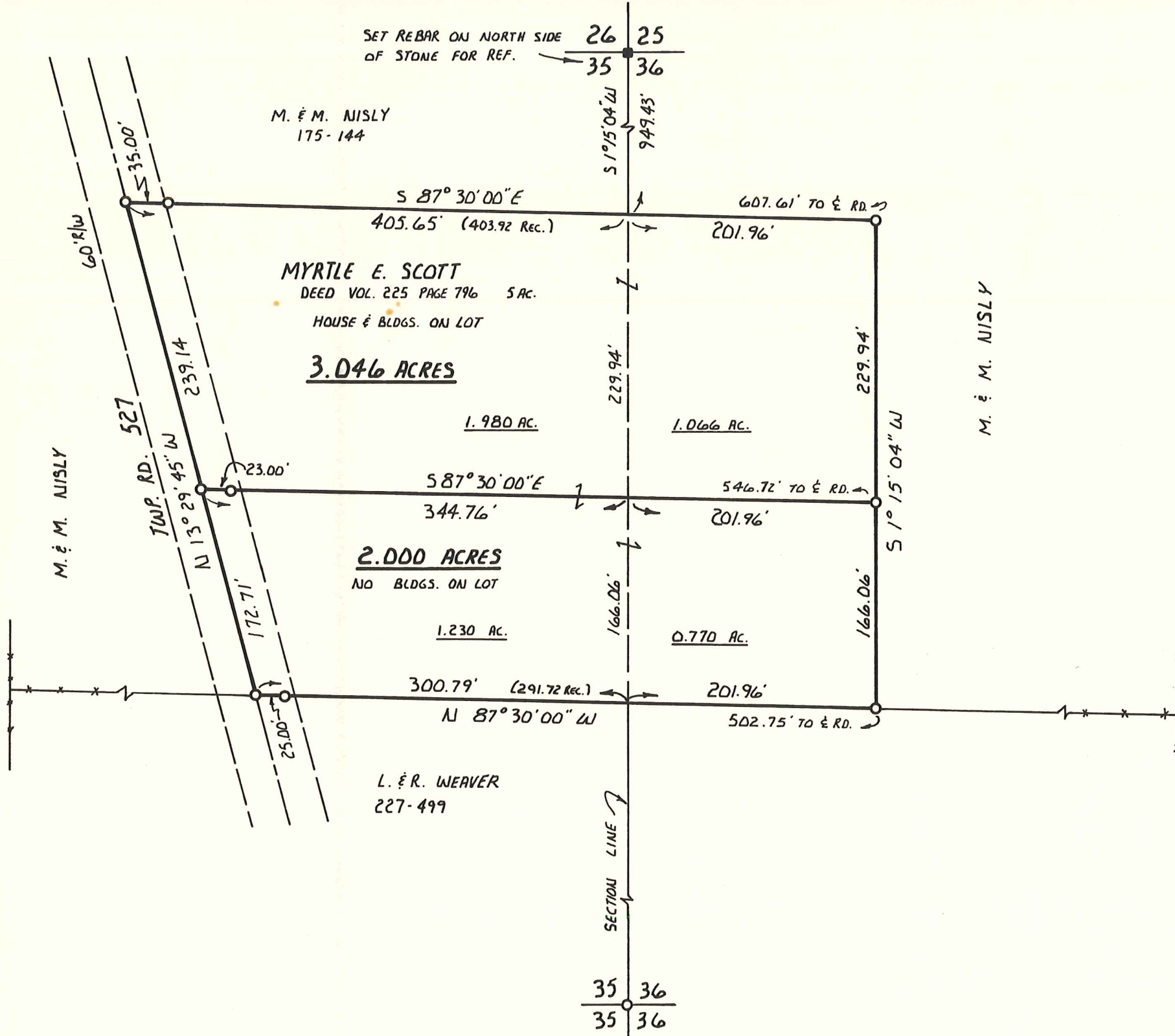
2.000 ACRES

NO BLDGS. ON LOT

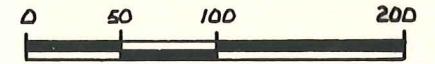
1.230 AC.

0.770 AC.

L. & R. WEAVER
227-499



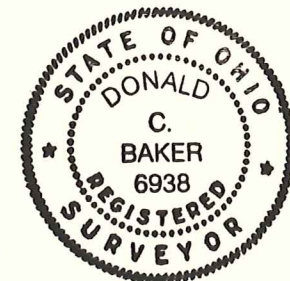
RIPLEY TOWNSHIP
N.W. QTR. SECTION 36
N.E. QTR. SECTION 35
T-18 N R-14 W
HOLMES COUNTY, OHIO



SCALE: 1" = 100'

- MARKED STONE FOUND
- 5/8" RE-BAR WITH I.D. CAP SET

BEARINGS FROM: DEED VOL. 225
PAGE 796



I CERTIFY THIS SURVEY TO BE CORRECT
TO THE BEST OF MY KNOWLEDGE.

Donald C. Baker

DONALD C. BAKER

P.S. 6938

4321 T.R. 252

GLENMONT, OH.

P.H. 377-4177

MARCH 19 1987