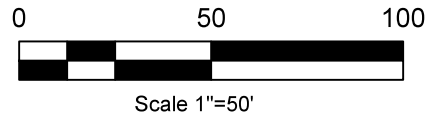
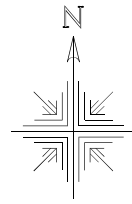


Ripley Township
S.E Qtr. Sec. 33
T-18 N; R-14 W
Holmes County, Ohio

SURVEYED FOR: Crystal Anderson



- 5/8" Rebar Found
- ⊙ 3/4" Pipe Found unless noted
- ⊗ 5/8" Capped Pin Found "Baker"
- ▲ R.R. Spk. Fd.
- 5/8" Capped Pin Found "Galbraith"
- Point

REFERENCES:
 Deeds as shown

Plat Vol. 12 Page 328
 Plat Vol. 08 Page 654
 Plat Vol. 19 Page 3589

Basis of Bearing: Grid North,
 Ohio State Plane Coordinate
 System Ohio North Zone, NAD 83.

Dale T. McKee
 Jackie L. McKee
 O.R. Vol. 219 Page 931

Dale T. McKee
 Jackie L. McKee
 Deed Vol. 245 Page 320

Conc. Drive

S 89°56'14" E
 794.55'

N 89°56'14" W 425.00'
 290.41' Total

N 00°22'28" W
 150.00' Total

Drive encroaches 24.7'±

1.000 Acres

Mona Lisa Colvin
 Christine Kaufman
 O.R. Vol. 264 Page 4229
 PPN 2300463000

25.08'

S.R. 754

S 00°22'28" E
 150.00'
 Section Line

31.75'

T.R. 517
 (40' R/W)

290.41' Total
 N 89°56'14" W

N 89°54'20" W
 24.88'

N 00°22'28" W
 650.00'

33 34
 4 3

This was confirmed with a beep
 and was calculated using Plat
 Vol. 19 Page 3589 and Plat Vol.
 8 Page 654 but was not
 recovered due to road traffic
 and safety.

This was confirmed with a beep
 and was calculated using Plat
 Vol. 19 Page 3589 but was not
 recovered due to road traffic
 and safety.



I certify this survey to be correct to the best of
 my knowledge.

Caleb Jerome Galbraith P.S. 8703
 Date: August 9, 2023
 Job ID: 10123-RP14

Pioneer Surveying & Services, LLC.
 5434 Township Road 377
 Millersburg, Ohio 44654
 Phone: 330-231-0497
 Email: caleb@pioneersurveyingandservices.com

