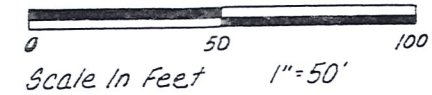


A Survey Of The Lands Of George S. & Margaret D. Read
 As Defined In Deed Vol. 163, Page 53 - Being Lot 103 & 104 &
 Part Of 105 In The LAKELAND BEACH ALLOTMENT (Plat
 Vol. 1, Pg 377) And Adjoining Acreage.

RIPLEY TOWNSHIP, HOLMES COUNTY, OHIO
 NW Qtr. Section 30, T-18N, R-14W

Note: All Corners Of Lots 98 & 99 Were
 Also Recovered Or Set On Request
 Of Mr. Jones, Owner

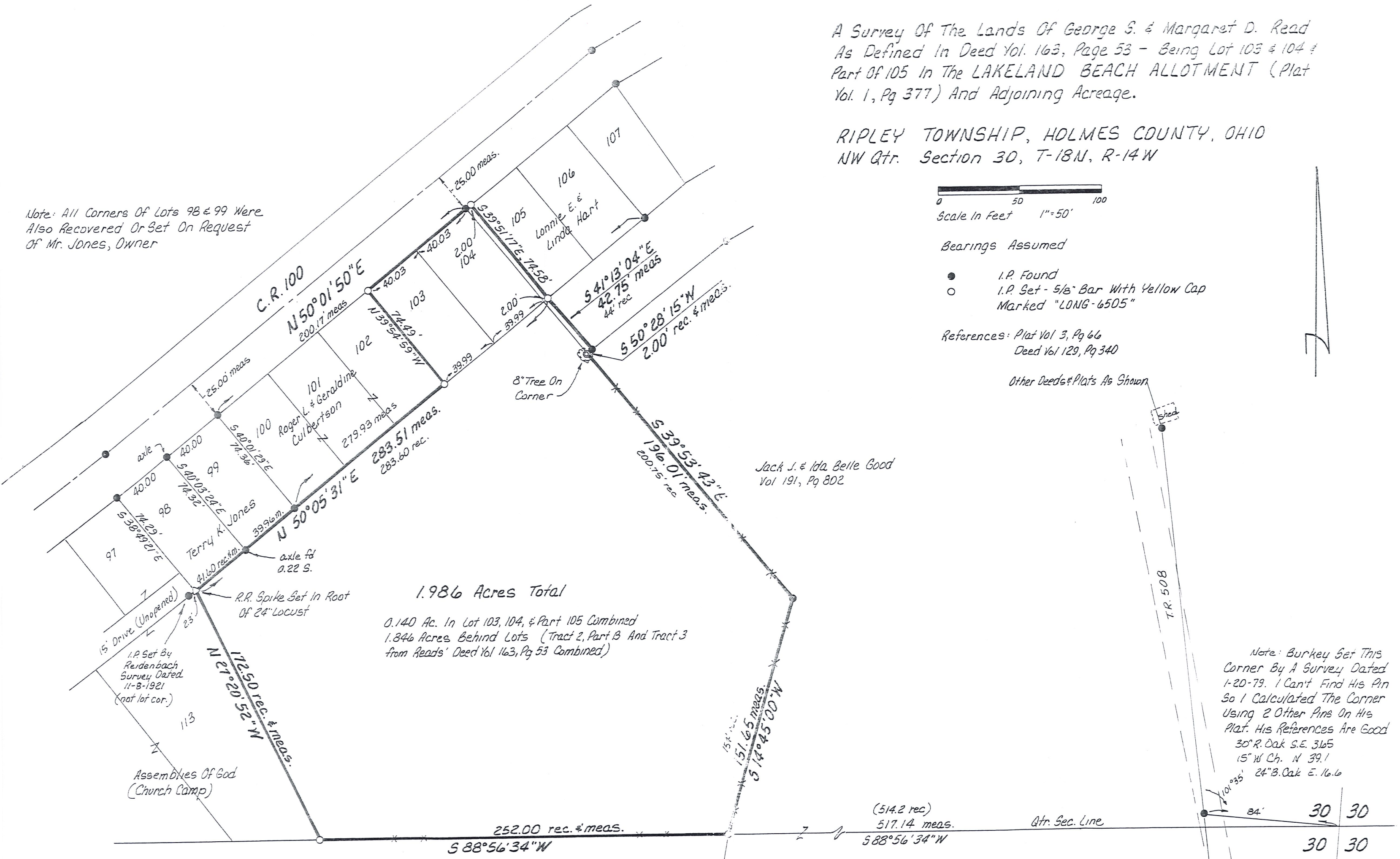


Bearings Assumed

- I.P. Found
- I.P. Set - 5/8" Bar With Yellow Cap Marked "LONG-6505"

References: Plat Vol 3, Pg 66
 Deed Vol 129, Pg 340

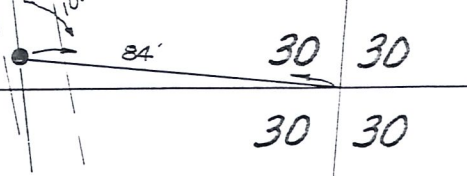
Other Deeds & Plats As Shown



1.986 Acres Total
 0.140 Ac. In Lot 103, 104, & Part 105 Combined
 1.846 Acres Behind Lots (Tract 2, Part B And Tract 3
 from Reads' Deed Vol 163, Pg 53 Combined)

Jack J. & Ida Belle Good
 Vol 191, Pg 802

Note: Burkey Set This
 Corner By A Survey Dated
 1-20-79. I Can't Find His Pin
 So I Calculated The Corner
 Using 2 Other Pins On His
 Plat. His References Are Good
 30° R. Oak S.E. 31.65
 15° W Ch. N 39.1
 24° B. Oak E. 16.6



I Certify This Survey To Be Correct To The Best Of My Knowledge
William H. Long Jan. 17, 1985
 William H. Long R.S. 6505
 13301 T.R. 503
 Big Prairie, Ohio 44611