

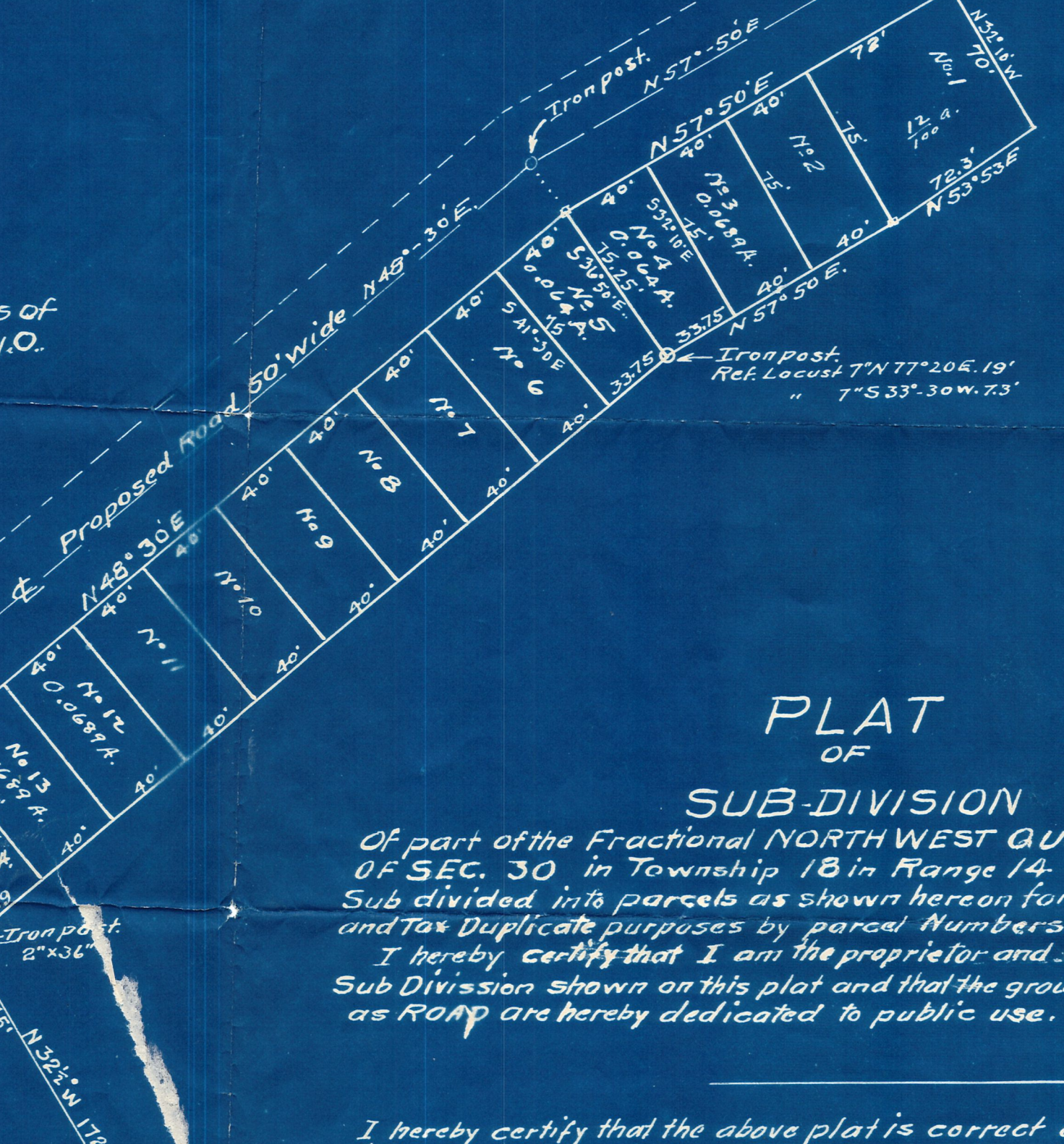
Approved 1922.

Commissioners of  
Holmes County, O.

I hereby certify that the parcels of land shown  
hereon have been appraised and placed on  
the Tax Duplicate of Holmes Co. Ohio

Auditor of Holmes Co. Ohio.

Parcel  
No 15  
113 A  
Subject to right of way of Road.



# PLAT OF

## SUB-DIVISION

Of part of the Fractional NORTH WEST QUARTER  
OF SEC. 30 in Township 18 in Range 14.  
Sub divided into parcels as shown hereon for deed descriptions  
and Tax Duplicate purposes by parcel Numbers

I hereby certify that I am the proprietor and owner of the  
Sub Division shown on this plat and that the grounds shown hereon  
as ROAD are hereby dedicated to public use.

I hereby certify that the above plat is correct as surveyed  
by me on the 8<sup>th</sup> day of November 1921

W.L. Reidenbach

Scale " = 60'

11.40 chains.

SE Cor of  
of N.W. Qr.