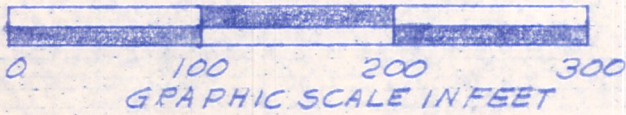
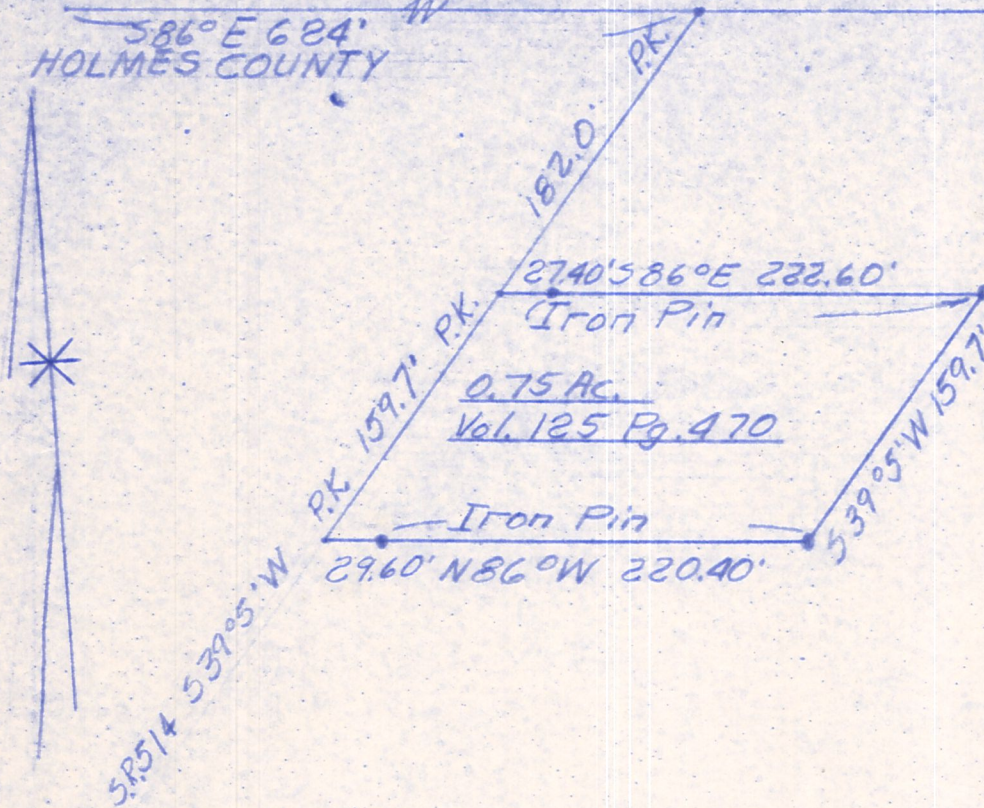


WAYNE COUNTY

NW. crnr NE 1/4
S27 T18 N R14 W SR. 226

WAY. CO. #1

586° E 684' W
HOLMES COUNTY



RESURVEY OF 0.75 AC. TRACT
 NE 1/4, S27, T18N, & R14W of Ripley
 Twp., Holmes Co. Ohio. This was
 done to reestablish property lines
 and pins adjacent to S.R. 514 are
 not mentioned in V. 125 P. 470.
 Robert L. Kasner, P.S. 5193 & P.E. 28820

MAP OFFICE COPY

9/3/74