

585°30'00"E
676.64'

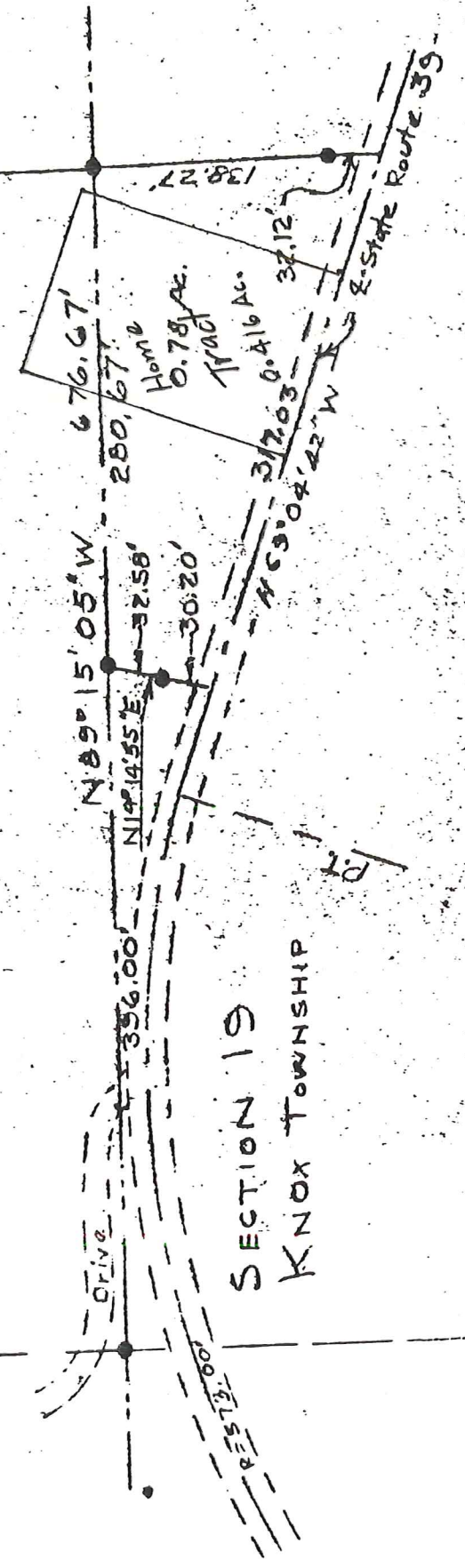
N0°00'38"W
1161.75'

979.71'
S0°00'38"E

18.07 Acres

SECTION 18
RIPLEY TOWNSHIP

SECTION 19
KNOX TOWNSHIP



● = Steel Pin

PLAT OF LANDS OF LARRY LEPLA

SECTION 18, RANGE 14W, TOWNSHIP 17N, RIPLEY TOWNSHIP
AND
SECTION 19, RANGE 14W, TOWNSHIP 17N, KNOX TOWNSHIP

HOLMES COUNTY
OHIO

RECEIVED
JUN 08 1965
Hol. Co. Tax Map Office

Scale: 1" = 100'

December 7, 1973

B. A. Dittmer, R. S. #414