

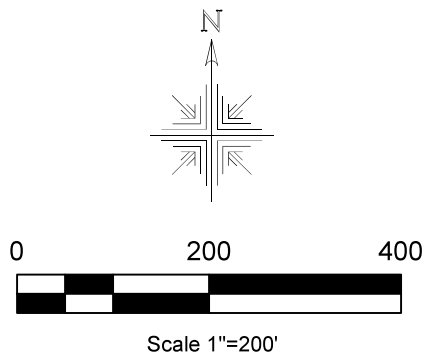
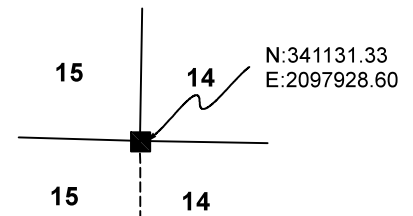
**Ripley Township  
S.E. Qtr. Section 15  
T-17 N; R-14 W  
Holmes County, Ohio**

SURVEYED FOR: Robert Pendlebury

Deeds as shown

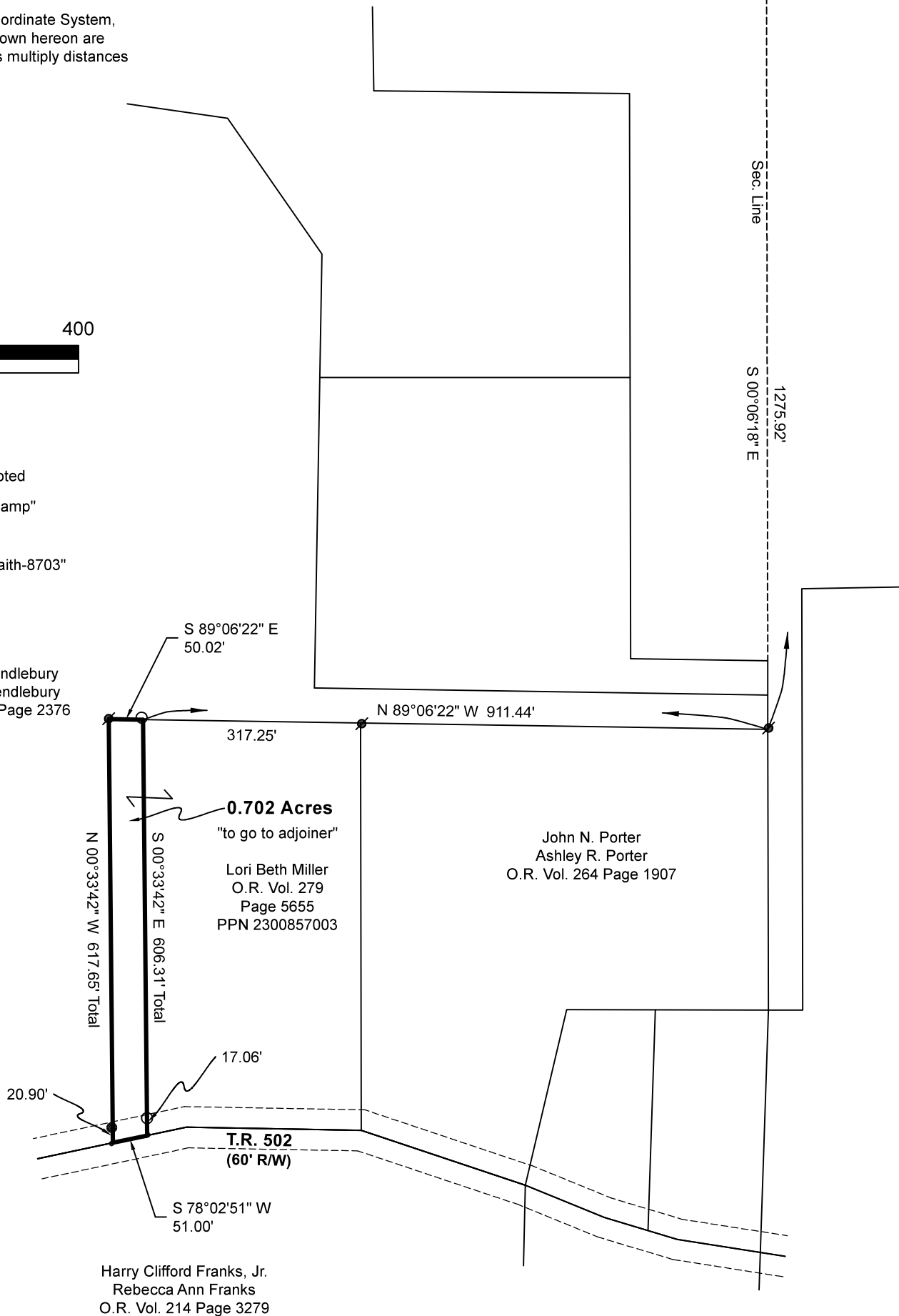
- Plat Vol. 17 Page 745
- Plat Vol. 19 Page 655
- Plat Vol. 19 Page 638
- Plat Vol. 19 Page 386
- Plat Vol. 19 Page 1335

Basis of Bearing from Ohio State Plane Coordinate System, North Zone, NAD 83 (2011). Distances shown hereon are ground distances. To obtain grid distances multiply distances by scale factor of 0.99992692.



- 5/8" Rebar Found unless noted
- ⊙ 5/8" Capped Pin Found "Shamp"
- Stone Found
- 5/8" Capped Pin Set "Galbraith-8703"
- Point

Robert C. Pendlebury  
Denise M. Pendlebury  
O.R. Vol. 221 Page 2376



I certify this survey to be correct to the best of my knowledge.

*Caleb Jerome Galbraith*  
Caleb Jerome Galbraith P.S. 8703  
Date: June 15, 2026  
Job ID:11426

Pioneer Surveying & Services, LLC.  
5434 Township Road 377  
Millersburg, Ohio 44637  
Phone: 330-231-0497  
Email: caleb@pioneersurveyingandservices.com

