



BEARINGS ESTABLISHED FROM PLAT 12/22 AND ARE TO DENOTE ANGULAR MEASUREMENT ONLY.

GAIL L. ROSALES  
D.V. 238/155

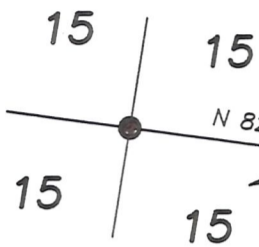
JOHN C. BUREN  
D.V. 219/818  
D.V. 232/359

**30.021 ACRES**

**50.000 ACRES TOTAL**

(30.021 AC. IN THE N.E. QTR. OF SEC. 15,  
4.627 AC. IN THE S.E. QTR. OF SEC. 15 &  
15.352 AC. IN THE S.W. QTR. OF SEC. 14)

GARY & RUTH ANN WAY  
O.R. 69/11



TREE LINE

TREE LINE

TREE LINE

TREE LINE

TREE LINE

TREE LINE

TREE LINE

TREE LINE

TREE LINE

TREE LINE

TREE LINE

TREE LINE

TREE LINE

TREE LINE

TREE LINE

TREE LINE

(30.021 AC.)

(1.688 AC.)

(2.384 AC.)

(2.243 AC.)

(13.880 ACRES)

(3.586 AC.)

(17.520 AC.)

(6.372 AC.)

(2.317 AC.)

(2.371 AC.)

(321.04')

(321.04')

(321.04')

(321.04')

(321.04')

(321.04')

(321.04')

(321.04')

(321.04')

(321.04')

(321.04')

(321.04')

(321.04')

(321.04')

(321.04')

(321.04')

(321.04')

(321.04')

(321.04')

(321.04')

(321.04')

(321.04')

(321.04')

(321.04')

(321.04')

(321.04')

(321.04')

(321.04')

(321.04')

(321.04')

(321.04')

(321.04')

(321.04')

(321.04')

(321.04')

(321.04')

**38.991 ACRES TOTAL**

13.880 ACRES FROM D.V. 245/809,811 & 813  
25.111 ACRES FROM D.V. 219/818 & D.V. 232/359

JOHN C. BUREN  
D.V. 245/809, 811, 813

JOSEPH M. &  
SARA M.  
HOCHSTETLER  
O.R. 75/162

JOSEPH M. &  
SARA M. HOCHSTETLER  
O.R. 64/823

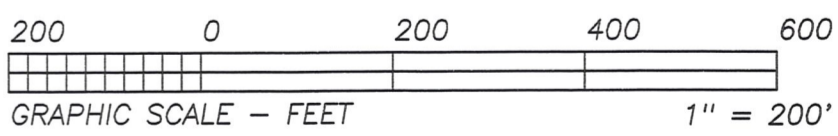
C/L 50' INGRESS/EGRESS  
EASEMENT (25' EACH SIDE)  
S 45°09'34"W 108.49'

RANDALL W. THOMAS &  
JACQUILIN K. LEEDY  
O.R. 90/854

JOSHUA W. &  
AMY J. PATTERSON  
O.R. 56/34

SEC. LN

C/L T.R. 502  
60' R/W



I CERTIFY THIS PLAT & SURVEY TO BE CORRECT TO THE BEST OF MY KNOWLEDGE:



*J. Shamp*  
DECEMBER 3, 2001  
JIM SHAMP, REG. SUR. NO. S-6088 DATE

**HEARTLAND SURVEYING, INC**

Jim Shamp  
5210 T.R. 257 MILLERSBURG, OH 44654  
PH: 330-674-4698

SURVEY		STATE	
JOHN C. BUREN		OHIO	
COUNTY	TWP.	RNG.	TWP.
HOLMES	RIPLEY	14 W	17 N
SOUTHWEST QUARTER OF SECTION 14 & N.E. & S.E. QUARTERS OF SECTION 15		001114.CRD 001114A.PL1	

- LEGEND:
- = STONE FD.
  - = 5/8" RE-BAR FD. UNLESS NOTED
  - = POINT-OF-DEPARTURE
  - = 5/8" X 30" RE-BAR W/PLASTIC I.D. CAP SET
  - ⊗ = R/R SPIKE SET
  - △ = R/R SPIKE FD.