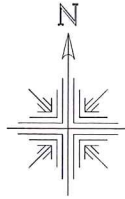
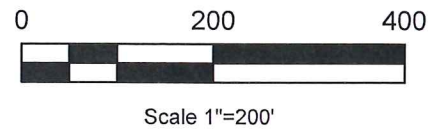


Ripley Township
N.E. Qtr. Section 14
T-17 N; R-14 W
Holmes County, Ohio

SURVEYED FOR: Gretchen Acker



- ▲ R.R. Spk. Found
- 5/8" Rebar Found "Galbraith"
- ⊙ 1/2" Pipe Found
- 5/8" Rebar Found unless noted
- ▼ 5/8" Rod Found capped "Long"
- ◆ 1/2" Pinched Top Pipe
- 5/8" Capped Pin Set "Galbraith"
- Point

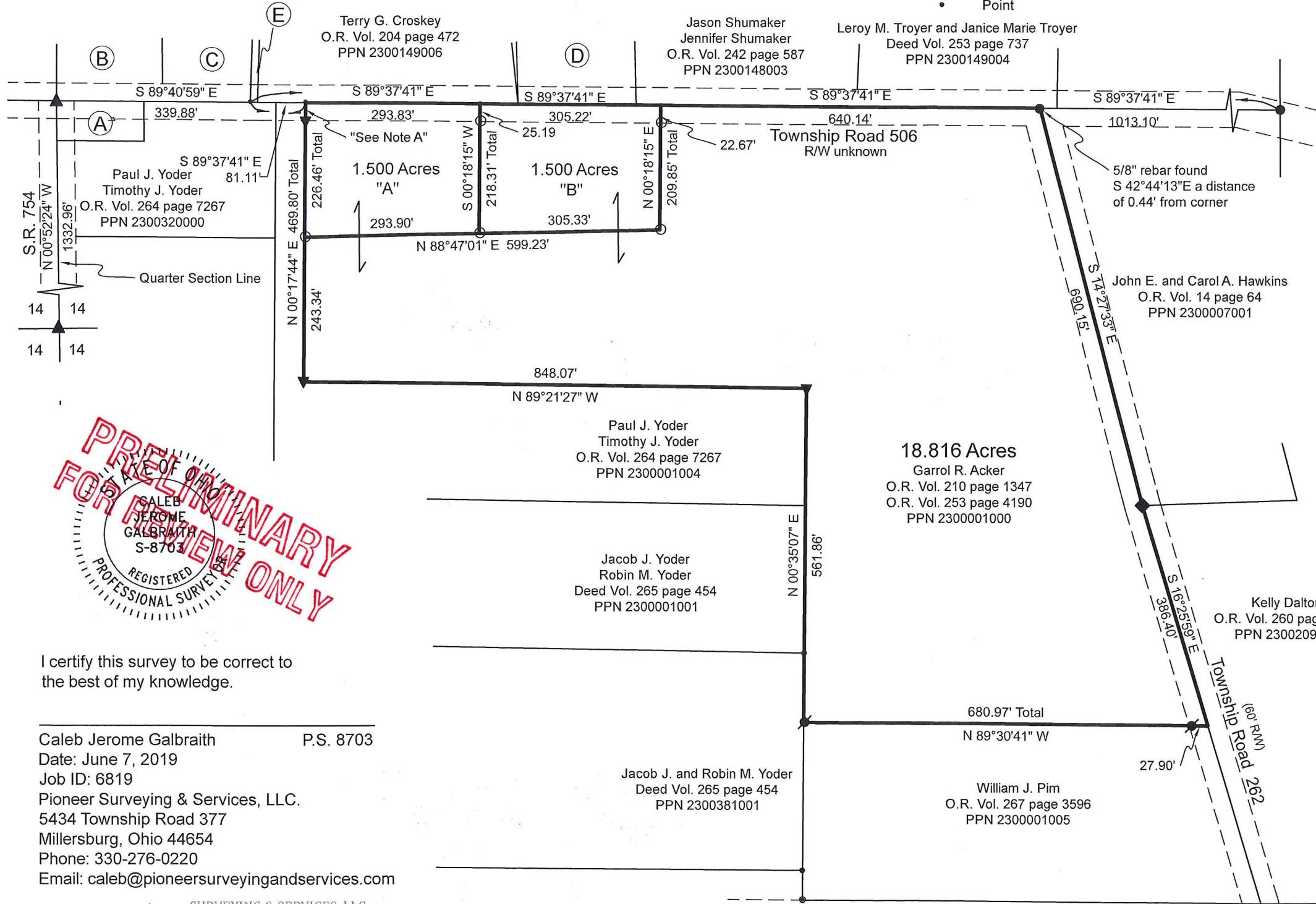
REFERENCES:

Deeds as shown

Surveys

- Plat book 5 page 05
- Plat book 15 page 35
- Plat book 19 page 2825
- Plat book 19 page 1003
- Plat book 16 page 820
- Plat book 19 page 3718

Basis of Bearing from Grid North, Ohio State Plane Coordinate System, North Zone, NAD 83.



- (A) The Hopewell United Presbyterian Church
O.R. Vol. 246 page 5781
PPN 2300396000
- (B) Trustees of East Hopewell Congregation
Deed Vol. 2 page 605
PPN 2360087000
- (C) Trustees of Hopewell Cemetery Association
Deed Vol. 95 page 185
PPN 2300941000
- (D) William Eugene Lecky
O.R. Vol. 20 page 740
PPN 2300149005
- (E) Trustees of Hopewell Cemetery Association
O.R. Vol. 95 page 179
PPN 2300940000

Note A: 5/8" Rebar Found "Long" S 00°21'32"E a distance of 30.42' from corner. Said rebar does not match location from previous surveys.

PRELIMINARY FOR REVIEW ONLY

I certify this survey to be correct to the best of my knowledge.

Caleb Jerome Galbraith P.S. 8703
Date: June 7, 2019
Job ID: 6819
Pioneer Surveying & Services, LLC.
5434 Township Road 377
Millersburg, Ohio 44654
Phone: 330-276-0220
Email: caleb@pioneersurveyingandservices.com

