

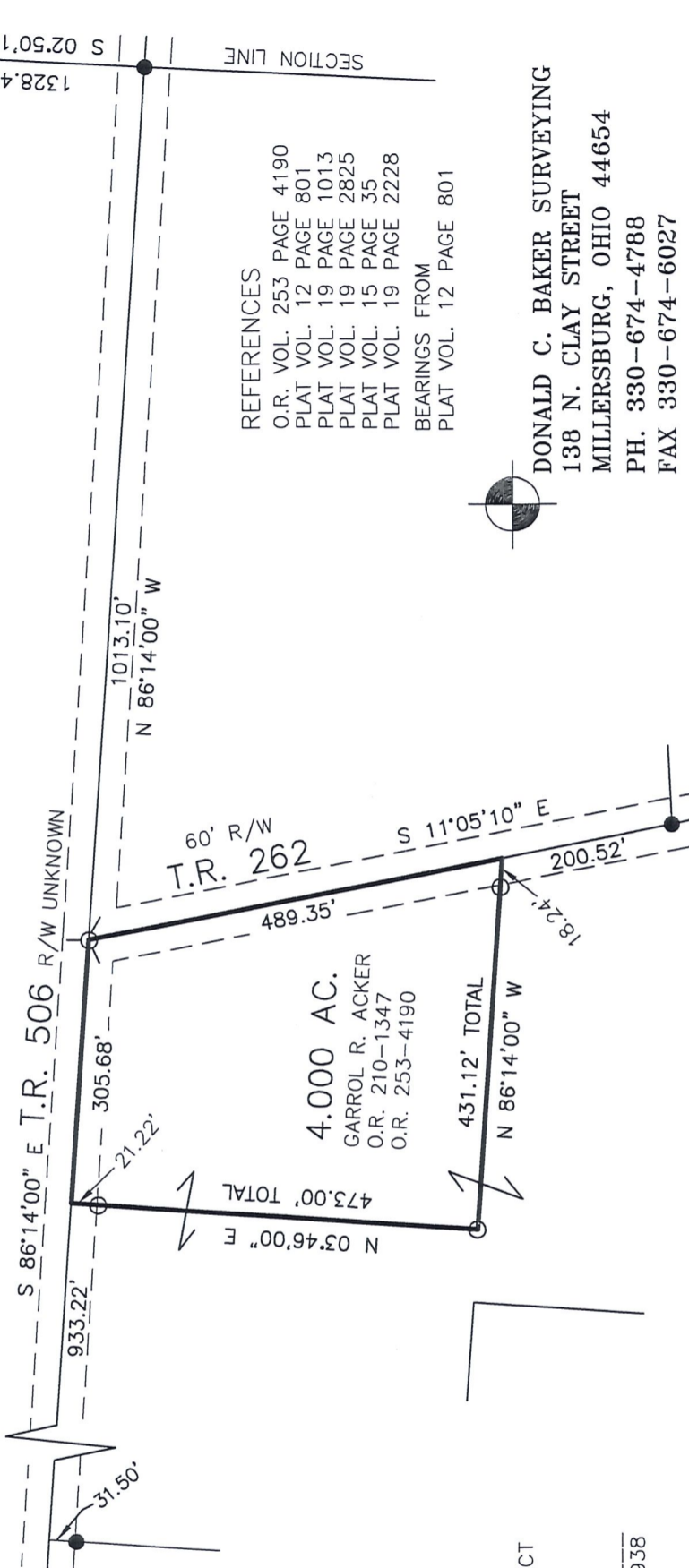


SCALE: 1" = 200'

- 5/8" REBAR FOUND UNLESS OTHERWISE NOTED
- P.K. NAIL SET
- 5/8" REBAR SET WITH I.D. CAP
- I.D. CAP MARKED "BAKER 6938"

RIPLEY TOWNSHIP
 N.E. QTR. SECTION 14
 T-17 N; R-14 W
 HOLMES COUNTY, OHIO

SURVEYED FOR: GARROL ACKER



REFERENCES
 O.R. VOL. 253 PAGE 4190
 PLAT VOL. 12 PAGE 801
 PLAT VOL. 19 PAGE 1013
 PLAT VOL. 19 PAGE 2825
 PLAT VOL. 15 PAGE 35
 PLAT VOL. 19 PAGE 2228
 BEARINGS FROM
 PLAT VOL. 12 PAGE 801



DONALD C. BAKER SURVEYING
 138 N. CLAY STREET
 MILLERSBURG, OHIO 44654
 PH. 330-674-4788
 FAX 330-674-6027



I CERTIFY THIS SURVEY TO BE CORRECT TO THE BEST OF MY KNOWLEDGE.

Donald C. Baker
 DONALD C. BAKER P.S. 6938
 DATE: NOV. 23, 2015
 FDB\JPD
 FILE NAME: WORK4\S-621-15

