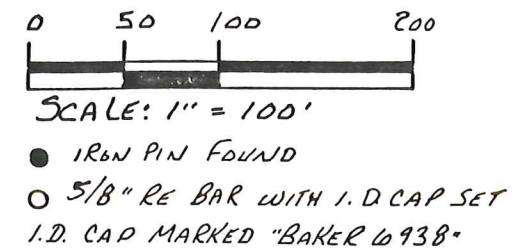
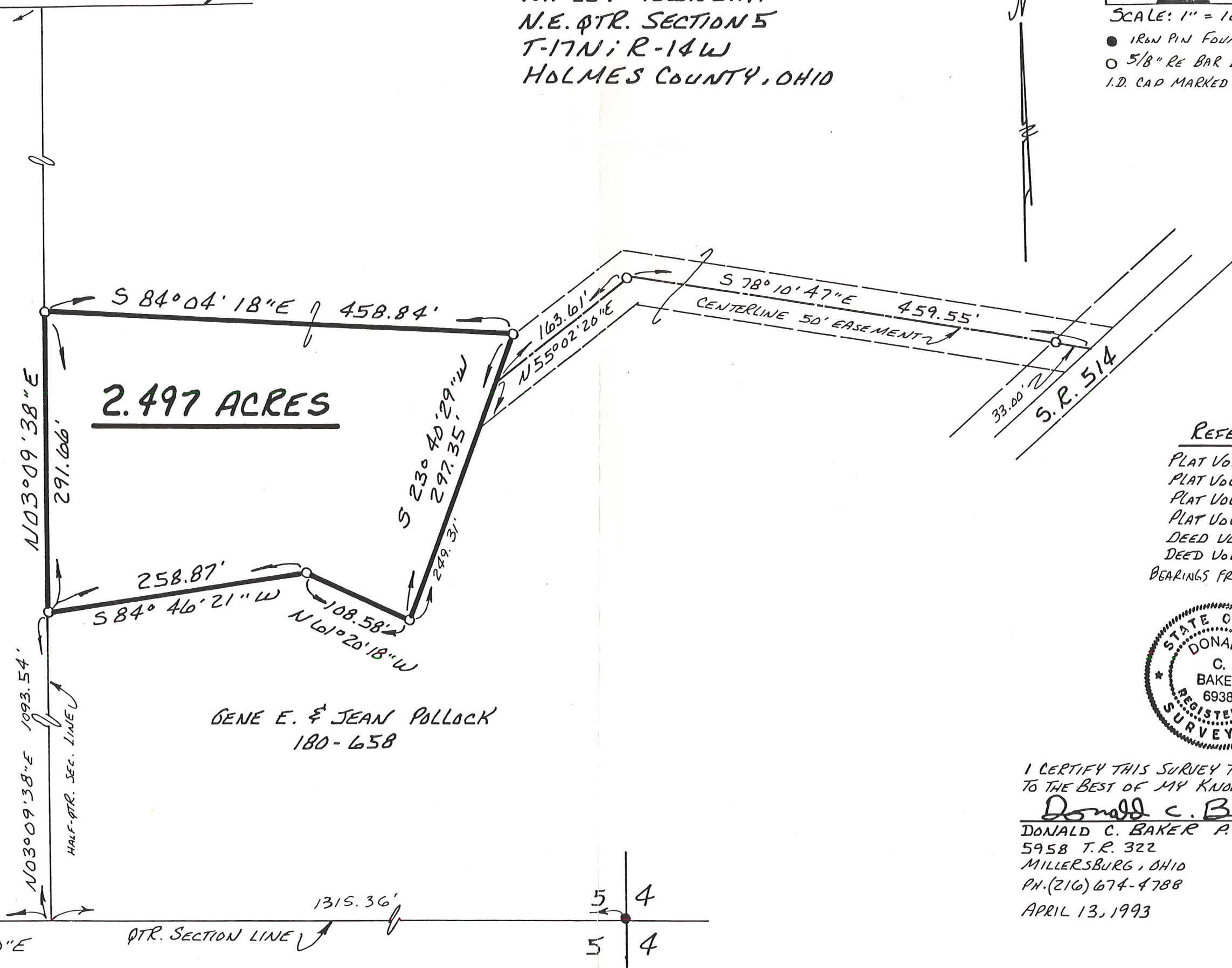


RIPLEY TOWNSHIP
 N.E. QTR. SECTION 5
 T-17N; R-14W
 HOLMES COUNTY, OHIO



LEVI A. F. MATTIE L. YODER
 179-176 186-610



2.497 ACRES

GENE E. & JEAN POLLOCK
 180-658

- REFERENCES:**
- PLAT VOL. 4 PAGE 55
 - PLAT VOL. 8 PAGE 367
 - PLAT VOL. 5 PAGE 39
 - PLAT VOL. 3 PAGE 98 B
 - DEED VOL. 180 PAGE 658
 - DEED VOL. 186 PAGE 610
 - BEARINGS FROM PLAT VOL. 7 pg. 230



I CERTIFY THIS SURVEY TO BE CORRECT
 TO THE BEST OF MY KNOWLEDGE.
Donald C. Baker
 DONALD C. BAKER P.S. 6938
 5958 T.R. 322
 MILLERSBURG, OHIO 44654
 PH. (216) 674-4788
 APRIL 13, 1993

