

SOUTH EAST QUARTER SECTION 1
 TOWNSHIP 17 RANGE 14 RIPLEY TOWNSHIP EXHIBIT A
 SOUTH WEST QUARTER SECTION 6
 TOWNSHIP 13 RANGE 13 PRAIRIE TOWNSHIP
 HOLMES COUNTY, OHIO DECEMBER, 1967

CORNER POST FOUND
 N.W. CORNER S.W. QUARTER
 SECTION 6 T-13 R-13
 PRAIRIE TOWNSHIP
 ALSO
 N.E. CORNER S.E. QUARTER
 SECTION 1 T-17 R-14
 RIPLEY TOWNSHIP

- - COR. POST FD.
- - IRON PIN SET
- ⊗ - SPIKE SET

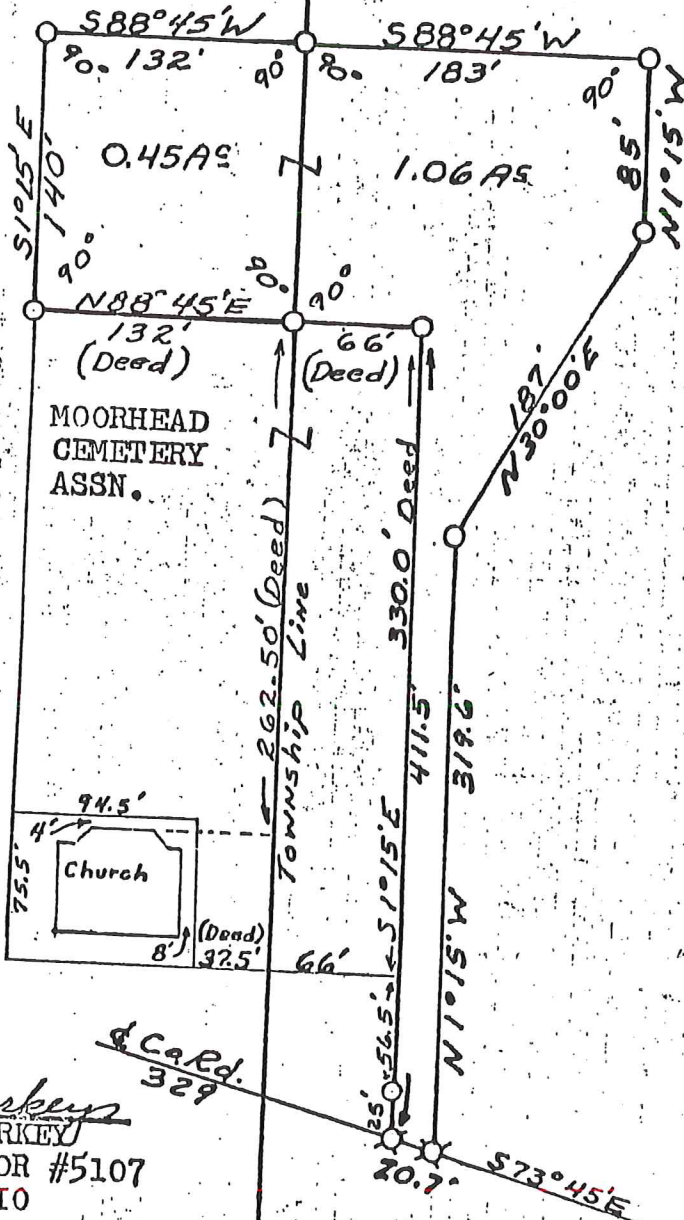
SCALE - 1"=100'

DEED REFERENCES:

V-99 P-173

V-99 P-174

ANDY M. YODER FARM



RECENTLY COMPL
 SCHOOL HOUSE ON
 THIS SITE.

I CERTIFY THIS SURVEY TO
 BE CORRECT TO THE BEST OF
 MY KNOWLEDGE AND BELIEF.

SIGNED William T. Burkey
 WILLIAM T. BURKEY
 REGISTERED SURVEYOR #5107
 STATE OF OHIO

