

Post at N.W. crnr
 S.E. 1/4 N.W. 1/4 525
 T8N R9W

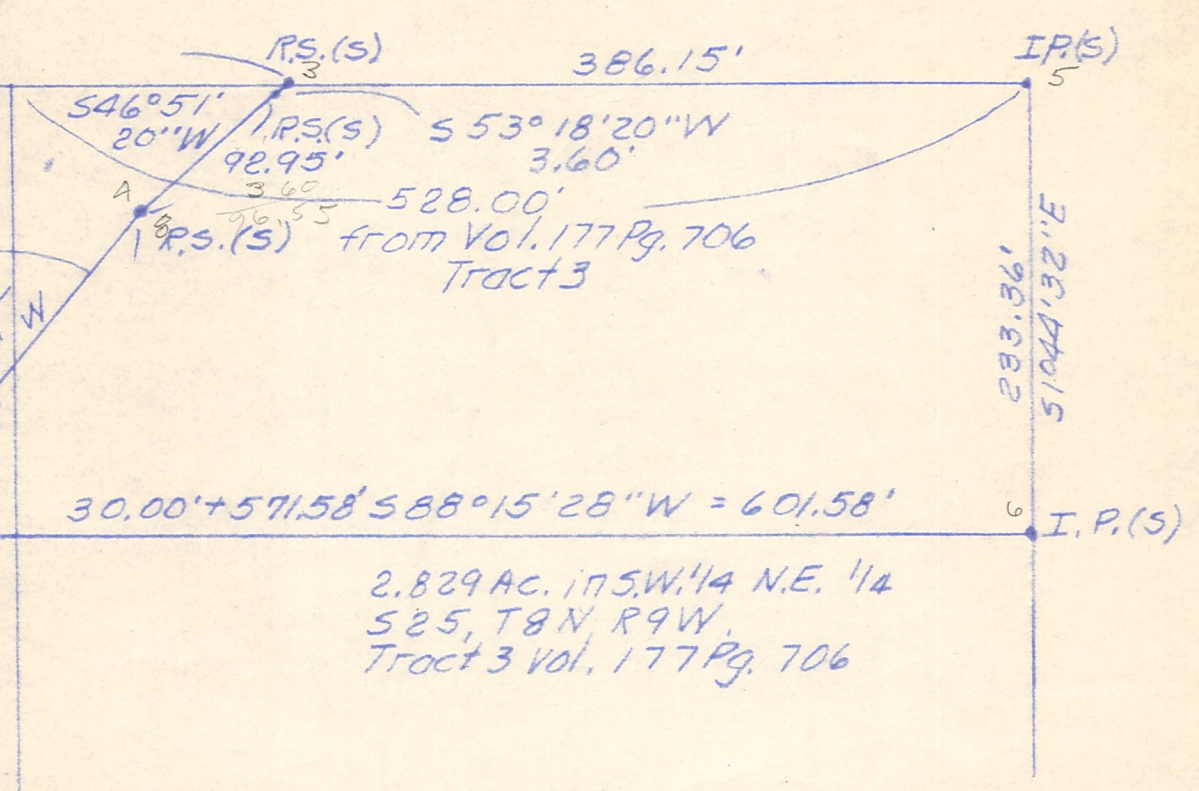
$$N88^{\circ}15'28''E \ 13.73' + 1629.28' + 386.15' = 2029.16'$$

22.45'
 I.P.(S)

$$\frac{13.73}{1643.01}$$

N.E. crnr S.E. 1/4 N.W. 1/4
 525, T8N, R9W, stone
 called for, not found.

Not a property
 Line



24.171 Ac. in S.E. 1/4 N.W. 1/4
 525, T8N, R9W
 Tract 1 Vol. 177 Pg. 706

Note: Above listed Vol. 177 Pg. 706 is the
 administratrix deed of Edna
 Gerhart of estate of Earl Butler.

27.996

NORTH

N103°3'18"W 691.64' + 22.95' = 714.09'

I.P.(S)
 N62°14'40"W
 460.20'

16 I.P.(S)
 175.18' S84°17'50"W
 15 I.P.(S)
 N70°2'30"W 65.72'
 14 R.S.(S)
 552°21'10"W 153.00'

TR. 10
 545°32'50"W
 364.13'

12 R.S.(S)
 549°54'10"W
 110.43

11 R.S.(S)
 542°59'50"W
 95.38'

10 R.S.(S)

543°59'30"W
 317.69'

R.S.(S)
 R.S.(S)
 I.P.(S)

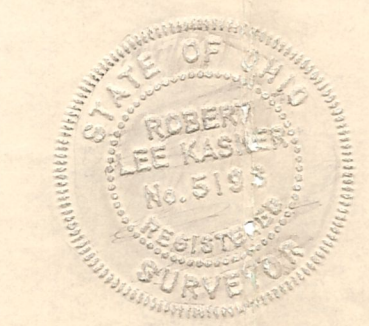
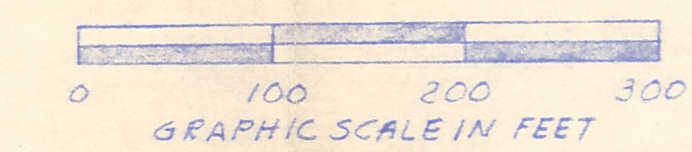
$$30.00' + 571.58' S88^{\circ}15'28''W = 601.58'$$

2.829 Ac. in S.W. 1/4 N.E. 1/4
 525, T8N, R9W,
 Tract 3 Vol. 177 Pg. 706

546°51'20"W
 92.95'
 528.00'
 R.S.(S) from Vol. 177 Pg. 706
 Tract 3

283.86'
 S104°13'21"E

I.P.(S)



PLAT OF A SURVEY IN
 RICHLAND TOWNSHIP,
 HOLMES COUNTY, OHIO

Known as part of S.E. 1/4 of
 N.W. 1/4 and part of S.W. 1/4
 of N.E. 1/4 of S 25, T8N, R9W.

Robert L. Kasner, P.S. 5193
 P.E. 28820

MAP OFFICE COPY