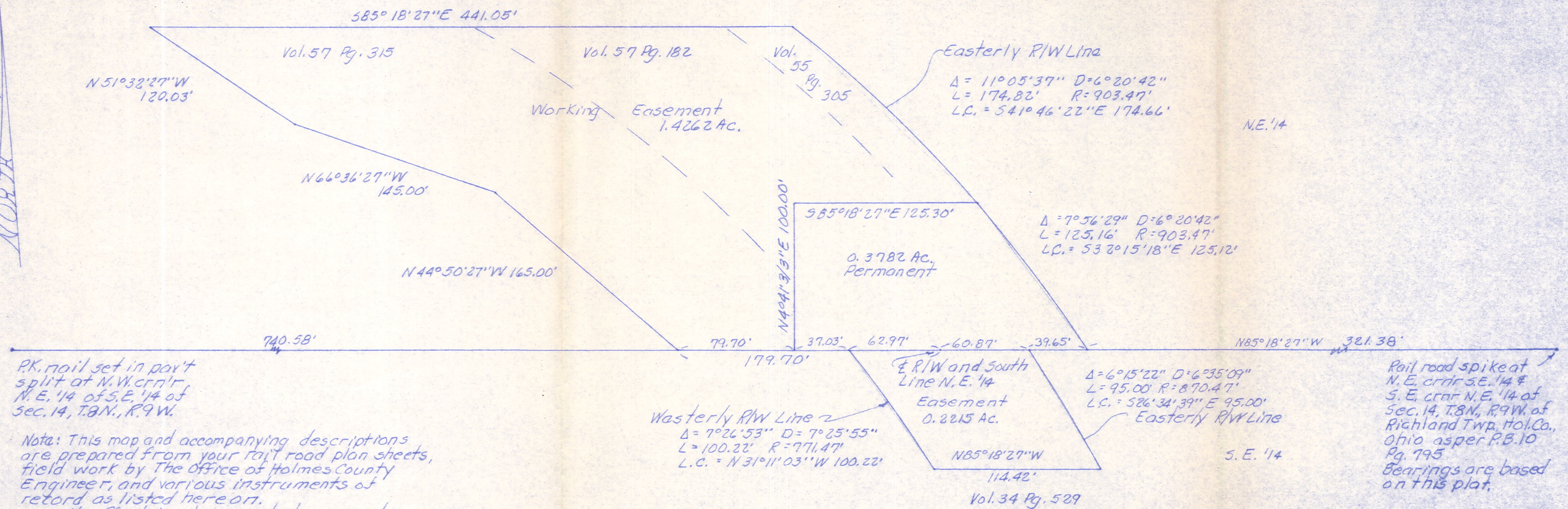


NORTH

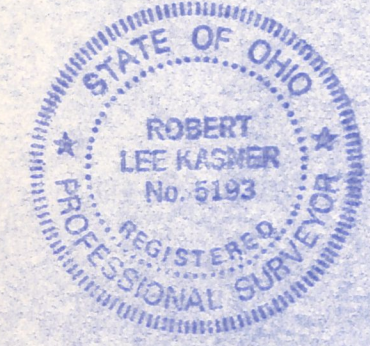
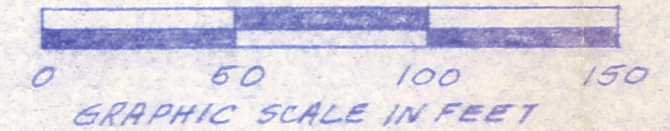


P.K. nail set in part split at N.W. cor'r N.E. '14 of S.E. '14 of Sec. 14, T.8N., R.9W.

Note: This map and accompanying descriptions are prepared from your rail road plan sheets, field work by The Office of Holmes County Engineer, and various instruments of record as listed here on.

No effort has been made to separate acreages from all parcels listed as only the right of easement is to be conveyed and no transfer of land is intended.

BADDOW PASS STATION
 Known as part of the N.E. '14 & S.E. '14 of Sec. 14, T.8N., R.9W., of Richland Twp., Hol. Co., Ohio
 Robert L. Kasner P.S. 5193
 P.E. 28820
 2113189



Rail road spike at N.E. cor'r S.E. '14 & S.E. cor'r N.E. '14 of Sec. 14, T.8N., R.9W. of Richland Twp., Hol. Co., Ohio as per P.B. 10 Pg. 795
 Bearings are based on this plat.