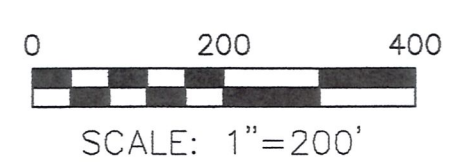
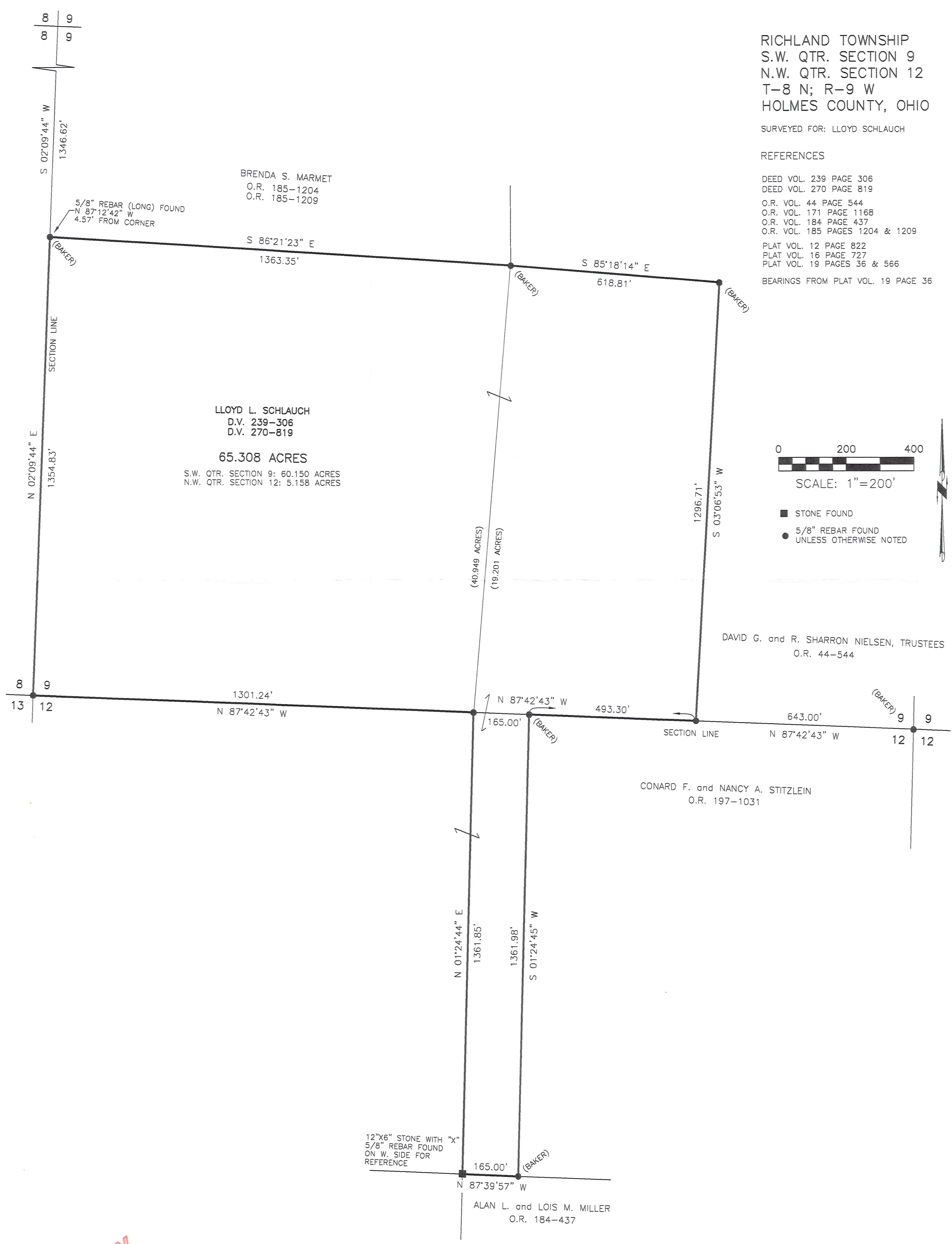


RICHLAND TOWNSHIP  
S.W. QTR. SECTION 9  
N.W. QTR. SECTION 12  
T-8 N; R-9 W  
HOLMES COUNTY, OHIO

SURVEYED FOR: LLOYD SCHLAUCH

REFERENCES

- DEED VOL. 239 PAGE 306
  - DEED VOL. 270 PAGE 819
  - O.R. VOL. 44 PAGE 544
  - O.R. VOL. 171 PAGE 1168
  - O.R. VOL. 184 PAGE 437
  - O.R. VOL. 185 PAGES 1204 & 1209
  - PLAT VOL. 12 PAGE 822
  - PLAT VOL. 16 PAGE 727
  - PLAT VOL. 19 PAGES 36 & 566
- BEARINGS FROM PLAT VOL. 19 PAGE 36



- STONE FOUND
- 5/8" REBAR FOUND UNLESS OTHERWISE NOTED



I CERTIFY THIS SURVEY TO BE CORRECT TO THE BEST OF MY KNOWLEDGE.

JAMIE D. DARR P.S. 7755  
DATE: JULY 9, 2008  
JDD/AB-ERZ  
FILE NAME: WORK3\S-229A-08\ERZ

DONALD C. BAKER SURVEYING  
138 N. CLAY STREET  
MILLERSBURG, OHIO 44654  
PH. 330-674-4788  
FAX 330-674-6027