

RICHLAND TOWNSHIP  
 S.W. QTR. SECTION 6  
 T-8 N; R-8 W  
 S.E. QTR. SECTION 10  
 T-8 N; R-9 W  
 HOLMES COUNTY, OHIO

SURVEYED FOR: STEVE MARTIN

REFERENCES

O.R. VOL. 43 PAGE 30  
 O.R. VOL. 53 PAGE 473  
 O.R. VOL. 191 PAGE 790

PLAT VOL. 6 PAGES 112 & 118  
 PLAT VOL. 14 PAGES 719 & 932  
 PLAT VOL. 17 PAGE 221  
 PLAT VOL. 18 PAGE 10

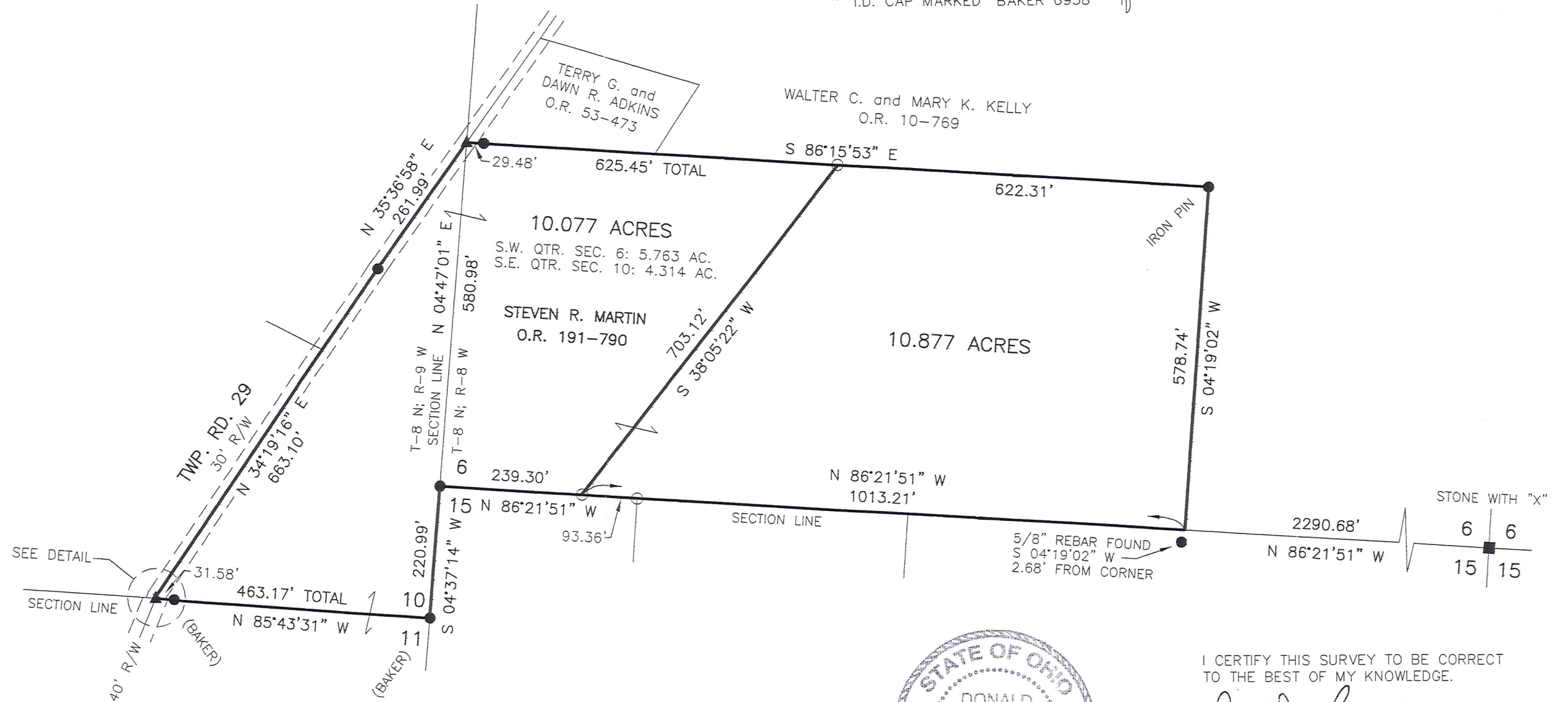
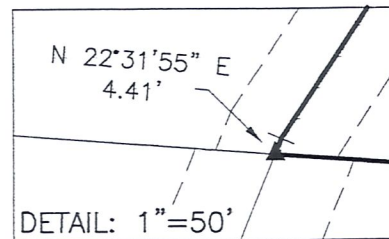
BEARINGS FROM PLAT VOL. 18 PAGE 10

0 200 400

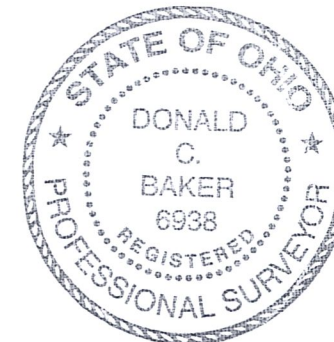


SCALE: 1"=200'

- STONE FOUND
- ▲ R.R. SPIKE FOUND
- 5/8" REBAR FOUND UNLESS OTHERWISE NOTED
- 5/8" REBAR SET WITH I.D. CAP I.D. CAP MARKED "BAKER 6938"



DONALD C. BAKER SURVEYING  
 138 N. CLAY STREET  
 MILLERSBURG, OHIO 44654  
 PH. 330-674-4788  
 FAX 330-674-6027



I CERTIFY THIS SURVEY TO BE CORRECT TO THE BEST OF MY KNOWLEDGE.

*Donald C. Baker*

DONALD C. BAKER P.S. 6938  
 DATE: JULY 12, 2006  
 REVISED: JAN. 23, 2007  
 KES\AEG-ERZ  
 FILE NAME: WORK3\S-512-06\ERZ