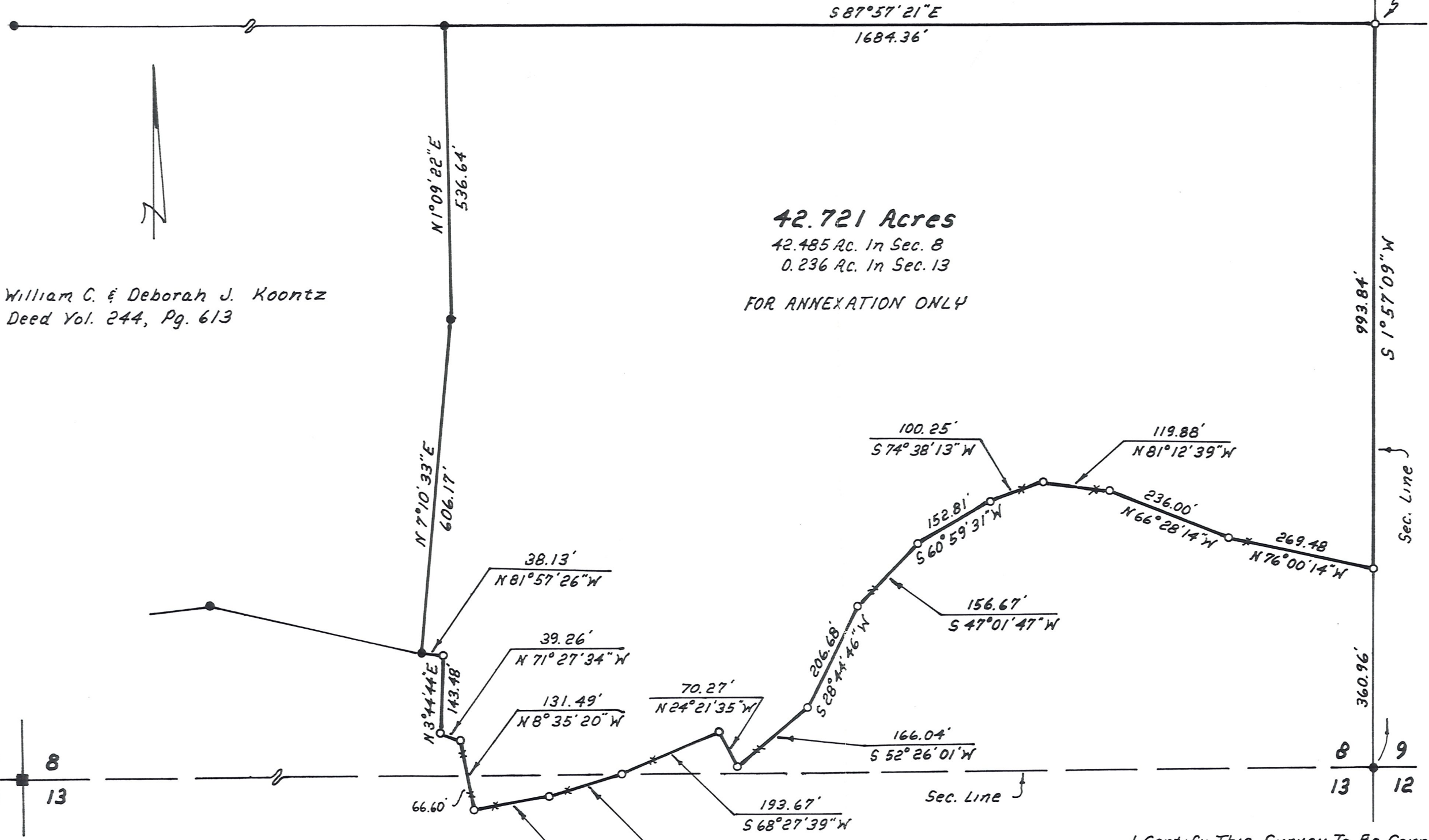


RICHLAND TOWNSHIP  
 HOLMES COUNTY, OHIO  
 S.E. QTR., SEC. 8, T-8N, R-9W  
 N.E. QTR., SEC. 13, T-8N, R-9W

Cole Excavators Inc.  
 Vol. 178, Pg. 312



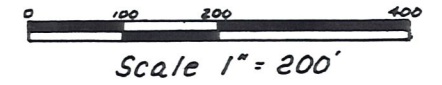
**42.721 Acres**

42.485 Ac. In Sec. 8  
 0.236 Ac. In Sec. 13

FOR ANNEXATION ONLY

William C. & Deborah J. Koontz  
 Deed Vol. 244, Pg. 613

- Stone Found
- Iron Pin Found
- Iron Pin Set - 5/8" Rebar With Yellow Cap Marked "LONG-7115"



Bearings From P.V. 12, Pg 2

References:  
 Plat Vol. 12, Pg. 2  
 Plat Vol. 13, Pg. 2  
 Wm. Long Survey In Sec. 8  
 Dated 5-8-86

8 8  
 13 13

8 9  
 13 12

Grantor:  
 James H. Morris  
 Deed Vol. 185, Pg. 357  
 & Vol. 217, Pg. 595

I Certify This Survey To Be Correct  
 To The Best Of My Knowledge.

Donald G. Long Oct. 10, 1989  
 Donald G. Long P.S. 7115  
 LONG SURVEYING INC.  
 12524 C.R. 6  
 Killbuck, Ohio 44637

