

P.O.B. Center of Sec. 8, T8N, R9W

B2p 12 Q NW 1/4 SE 1/4
From S.R. 5 Pg. 160 dated 4/29/1841

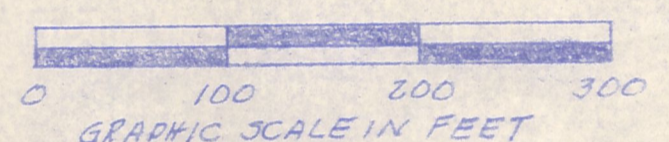
524°43'03"E 1492.1' along a distant line of occupation
indicated by an old wire fence on
ground and in trees.

N20°W to P.O.B.,
no distance
given in Vol. 89
Pg. 472 which is
1st description.
It does mention
a large rock at
road crossing.
54°W
N20°W
24°
Vol. 175 Pg. 699 #
Vol. 89 Pg. 487 give
same courses.

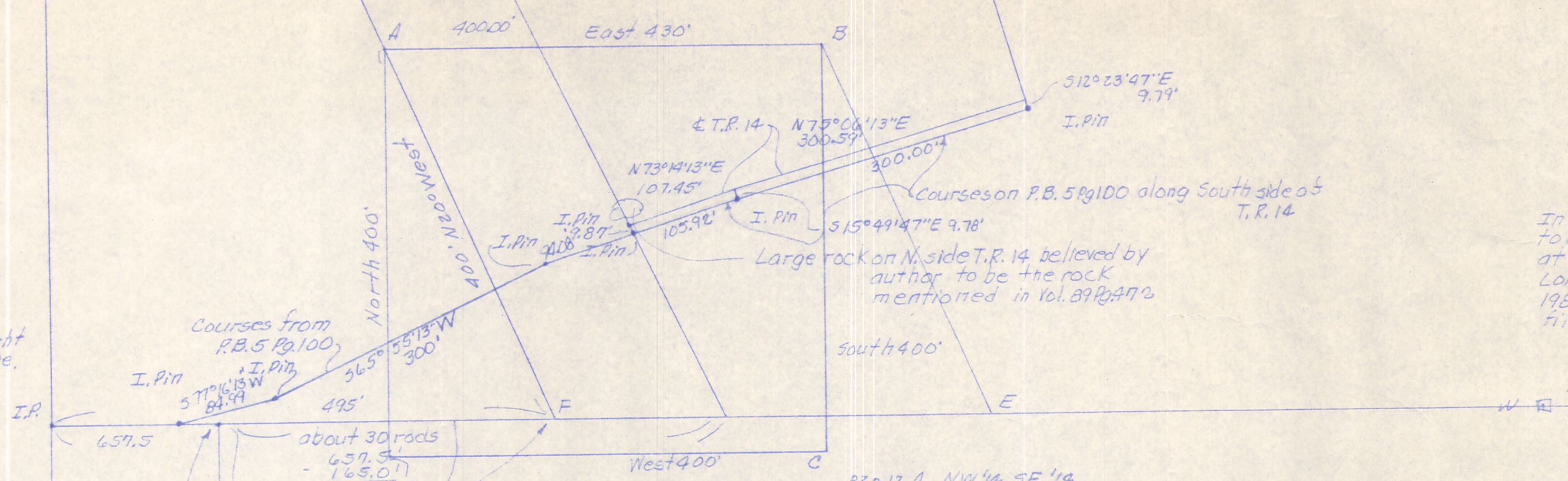
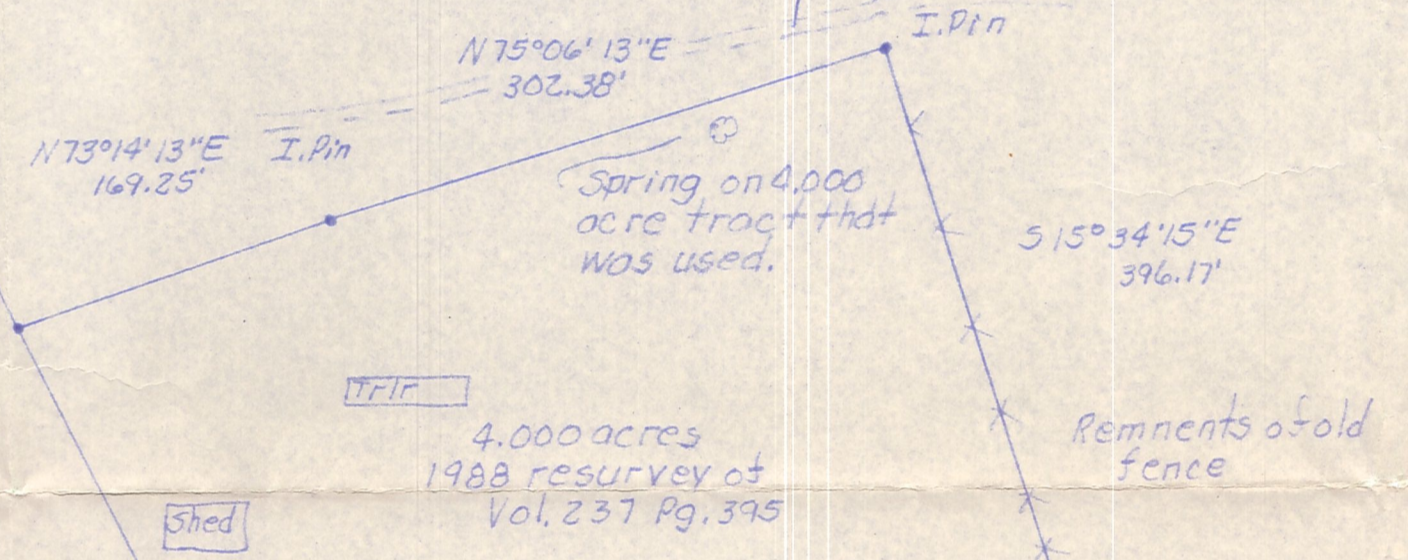
A, B, C, D are the points called
out in Vol. 175 Pg. 699 as on
4.00 acre exception.
A, B, E, F are probably what
was really meant.
Neither one includes the
buildings as does the 1988
survey that follows rem-
nants of lines of occupation.

Vol. 89 Pg. 472
34°W 68p (1853)
1853 S.R. 5 Pg. 160 dated 4/29/1841

Evidence of old road
around 4.00 acre tract



Sec. 8, T8N, R9W of
Richland Twp., Hol. Co.,
Ohio
Robert L. Kasper P.S. 5193
P.E. 20820
8130189



Iron pin set by
Kasper in 1992
at SW corner N 1/2
SE 1/4. Long ran
line from it to
where he thought
stone should be.

In 1971 Sellner claims
to have found a stone
at SE corner of N 1/2 SE 1/4.
Long could not find in
1986. Kasper could not
find it in 1988.

Courses from
P.B. 5 Pg. 100
57°16'13"W
84.99'
495'
about 30 rods
657.5'
165.07'
492.51' D
Pin set by Long
in 1986
I believe this corner was
mistaken for S.W. corner of
NW 1/4 of SE 1/4 of Sec. 8
in Vol. 89 Pg. 472

B2p 12 Q NW 1/4 SE 1/4
S.R. 5 Pg. 160 dated 4/29/1841
No angular relationship
given at corners.