

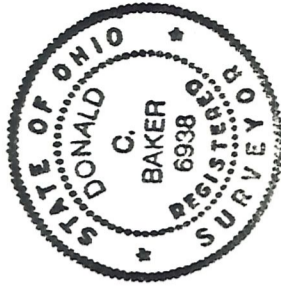
RICHLAND TOWNSHIP
 N.W. QTR. SECTION 1
 T-8N R-9W
 VILLAGE OF GLENMONT
 HOLMES COUNTY, OHIO



- IRON PIN FOUND
- ▲ NAIL FOUND
- △ P.K. NAIL SET
- 5/8" RE BAR WITH I.D. CAP SET
- I.D. CAP MARKED "BAKER 6938"

REFERENCES:

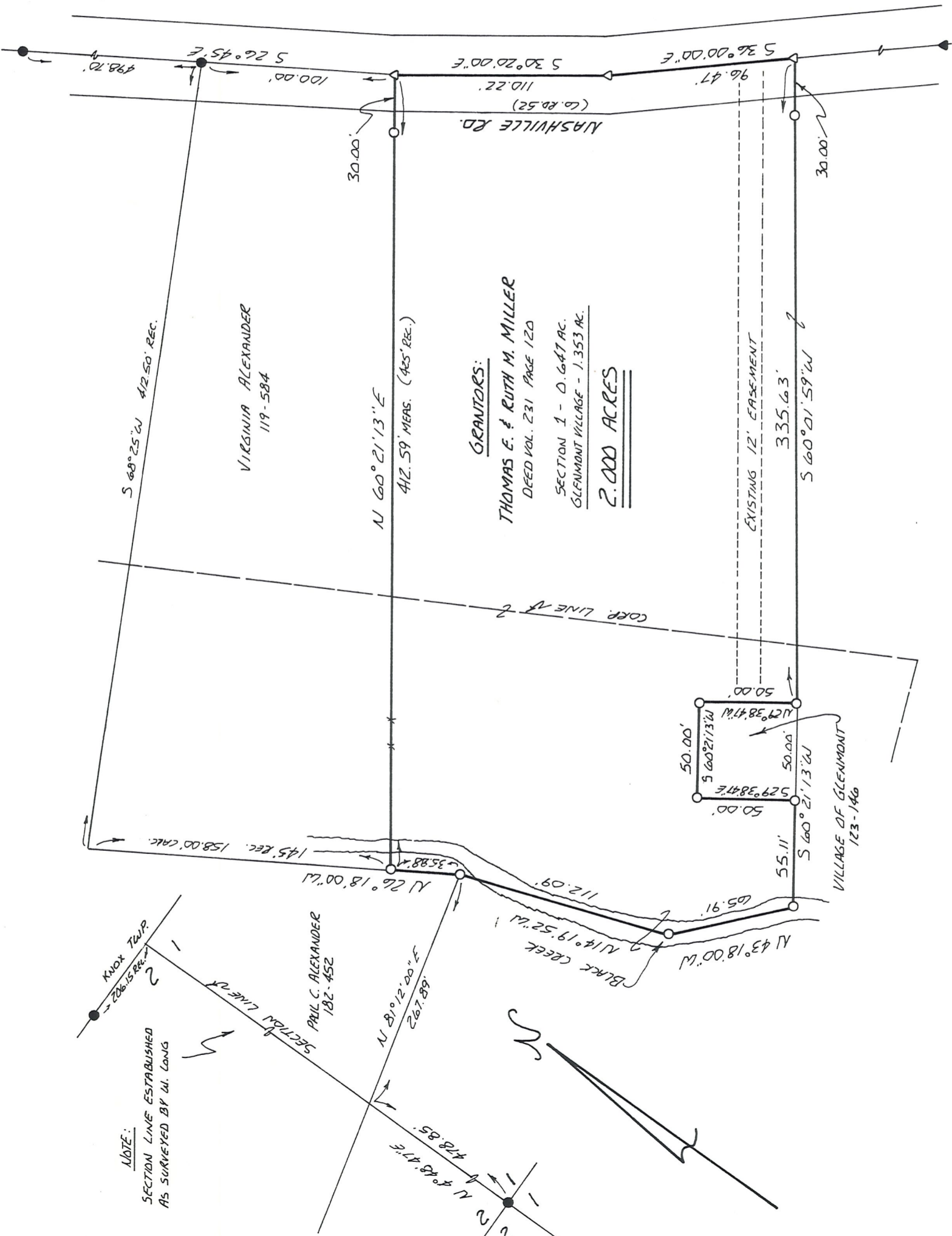
PLAT VOL. 1 PAGE 313
 PLAT VOL. 8 PAGE 457
 BEARINGS FROM PLAT VOL. 5
 PAGE 163
 VARIOUS DEEDS AS SHOWN



I CERTIFY THIS SURVEY TO BE CORRECT
 TO THE BEST OF MY KNOWLEDGE.

Donald C. Baker
 DONALD C. BAKER P.S. 6938
 4321 TR 252
 GLENMONT OH.

JAN 25, 1989



S 68°25'W 412.50' REC.

VIRGINIA ALEXANDER
 119-584

N 60°21'13"E
 412.59' MEAS. (425' REC.)

GRANTORS:

THOMAS E. & RUTH M. MILLER

DEED VOL. 231 PAGE 120

SECTION 1 - 0.647 AC.
 GLENMONT VILLAGE - 1.353 AC.

2.000 ACRES

EXISTING 12' EASEMENT

335.63'

S 60°01'59"W

145' REC. 158.00' CALC.

NOTE:
 SECTION LINE ESTABLISHED
 AS SURVEYED BY W. LONG

PAUL C. ALEXANDER
 182-452

N 81°12'00"E
 267.89'

N 14°19'52"W
 112.09'

N 43°18'00"W
 65.91'

N 29°38'47"E
 50.00'

S 60°21'13"W
 50.00'

N 12°38'47"W
 50.00'

S 60°21'13"W
 50.00'

N 29°38'47"E
 50.00'

S 60°21'13"W
 55.11'

N 43°18'00"W
 112.09'

N 14°19'52"W
 65.91'

N 29°38'47"E
 50.00'

S 60°21'13"W
 50.00'

N 12°38'47"W
 50.00'

S 60°21'13"W
 50.00'

VILLAGE OF GLENMONT
 123-146

CORNER LINE # 2

NASHVILLE RD.
 (60.80.52)

5 30°20'00"E
 110.22'

5 36°00'00"E
 96.47'

5 36°00'00"E
 100.00'

5 26°45'E
 498.70'

30.00'

30.00'

30.00'

30.00'

30.00'

30.00'

30.00'

30.00'

30.00'

30.00'

30.00'

30.00'

30.00'

30.00'

30.00'

30.00'

30.00'

30.00'

30.00'

30.00'

30.00'

30.00'

30.00'

30.00'

30.00'

30.00'

30.00'

30.00'

30.00'

30.00'

30.00'

30.00'

30.00'

30.00'

30.00'

30.00'

30.00'

30.00'

30.00'

30.00'

30.00'

30.00'

30.00'

30.00'

30.00'

30.00'

30.00'

30.00'