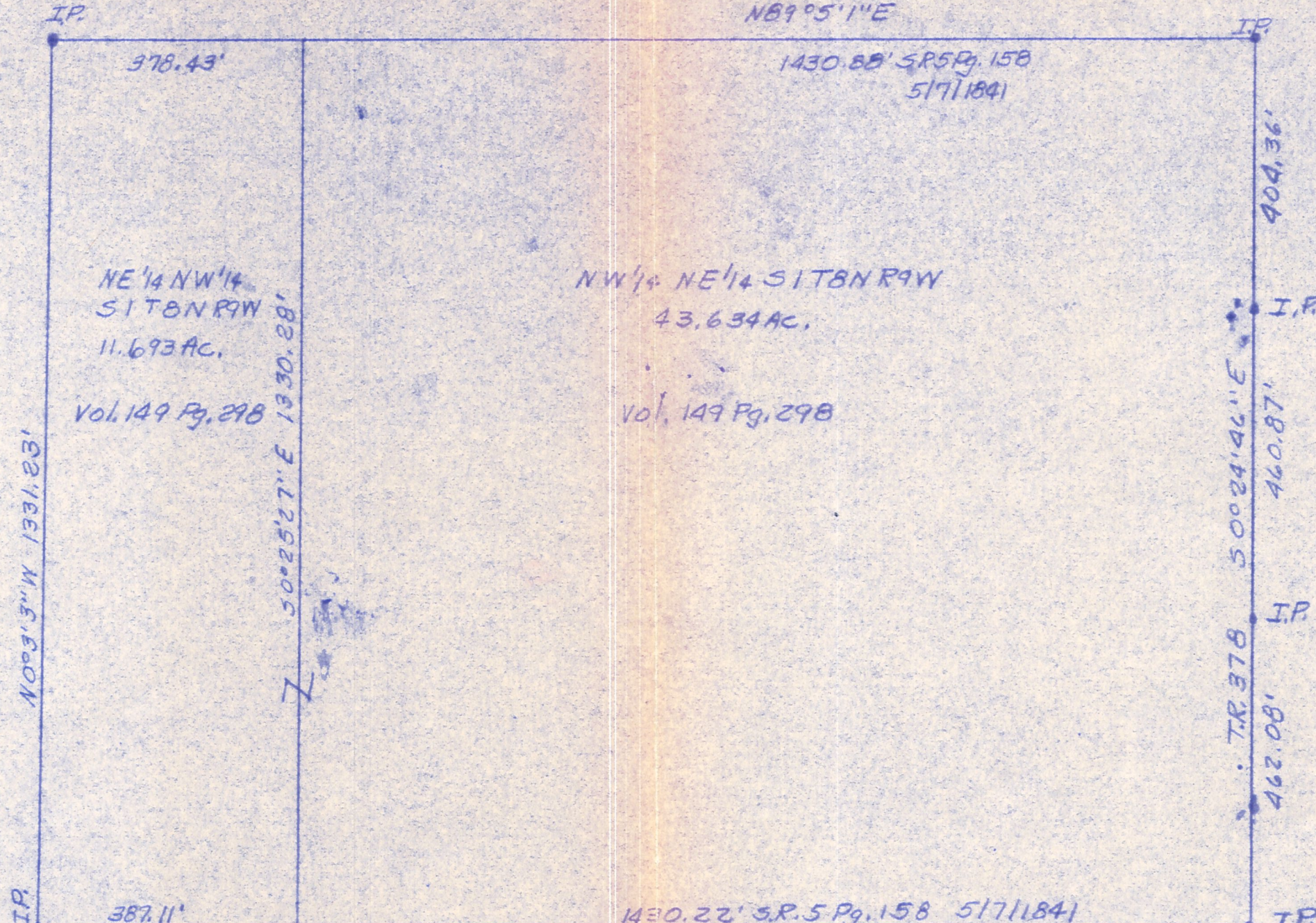


KNOX TWP. Lot 1, 4'14 T9N R9W

N89°05'11"E



NE 1/4 NW 1/4
S1 T8 N R9W
11.693 AC.

Vol. 149 Pg. 298

NW 1/4 NE 1/4 S1 T8 N R9W
43.634 AC.

Vol. 149 Pg. 298

SE 1/4 NW 1/4
S1 T8 N R9W

SW 1/4 NE 1/4 S1 T8 N R9W

Scale: 1" = 200'

PLAT OF SURVEY FOR
FRED MERWIN
NW 1/4 NE 1/4 + part of NE 1/4
NW 1/4 S1, T8 N, + R9 W of
Richland Twp, Hol. Co., Ohio
Robert L. Kasnar P.S. 5193 P.E. 28820
7/30/75



MAP OFFICE COPY