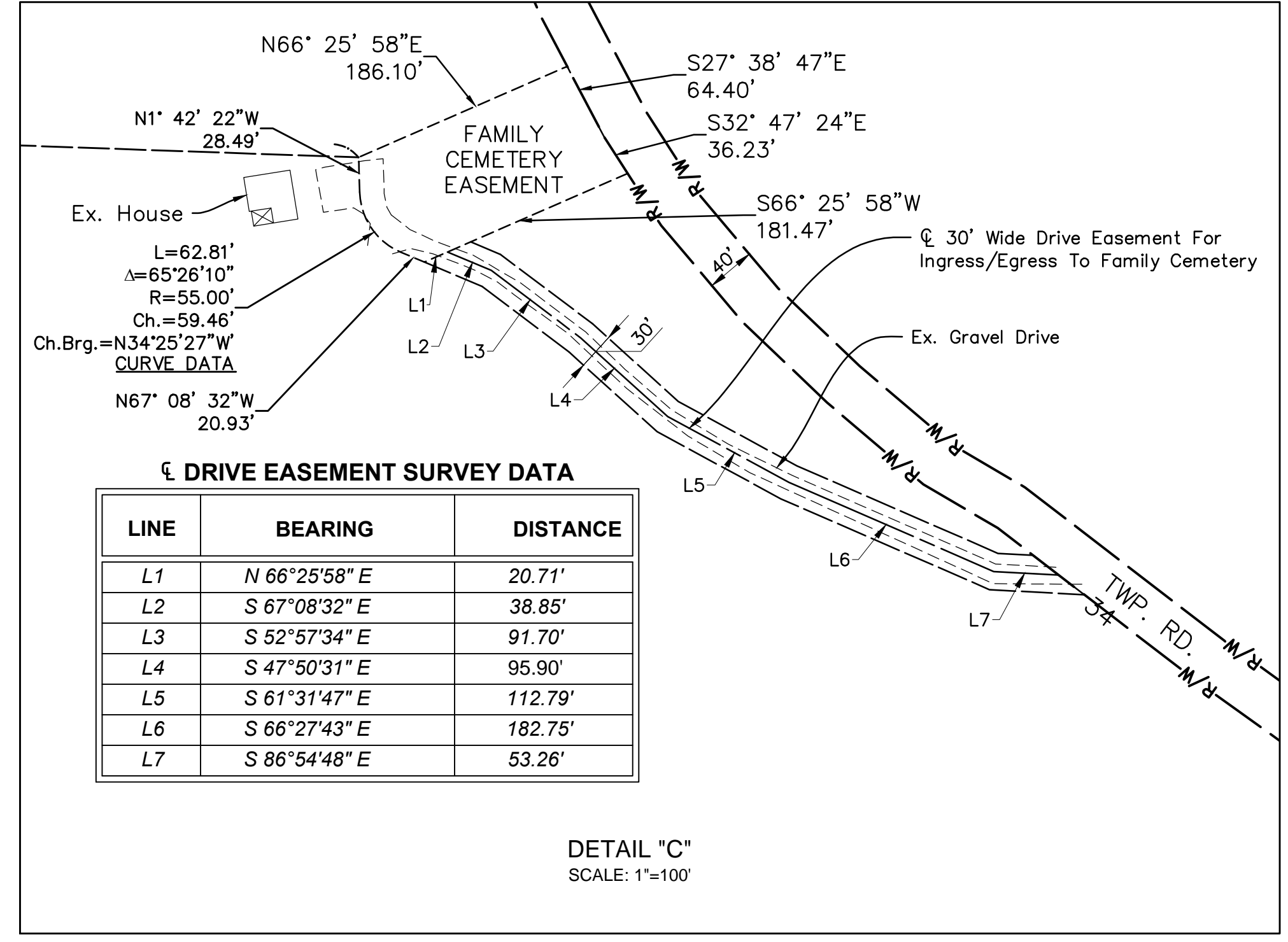


RETRACEMENT SURVEY
RICHLAND TOWNSHIP, COUNTY OF HOLMES
STATE OF OHIO
PART OF THE N.W. QTR. & S.W. QTR. SEC. 16
TOWNSHIP 8, RANGE 8

LEGEND

- 5/8" REBAR WITH "ENGINEERING ASSOCIATES" CAP SET
- IRON PIN OR PIPE FOUND
- STONE FOUND
- ⊕ DRILL HOLE IN STONE FOUND
- ⊕ DRILL HOLE IN STONE W/ 1/2" REBAR SET
- M MEASURED
- R RECORD
- R/W RIGHT-OF-WAY
- PPN PERMANENT PARCEL NUMBER
- E PROPERTY LINE



DRIVE EASEMENT SURVEY DATA

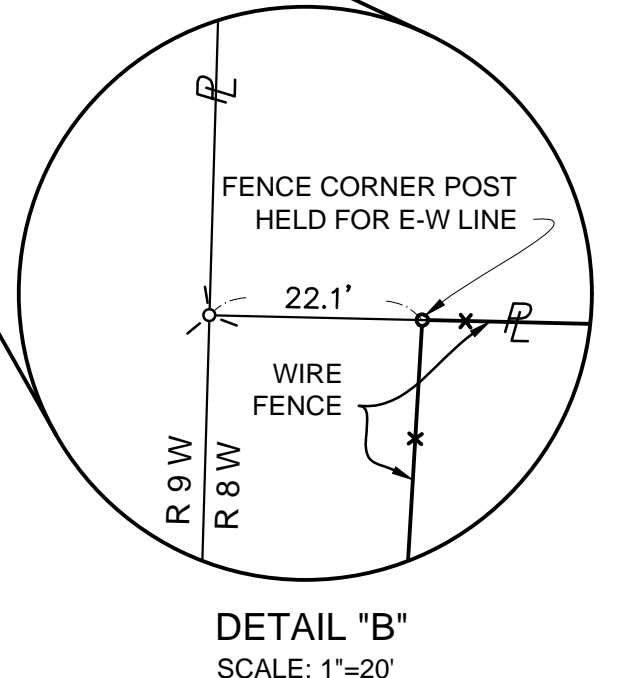
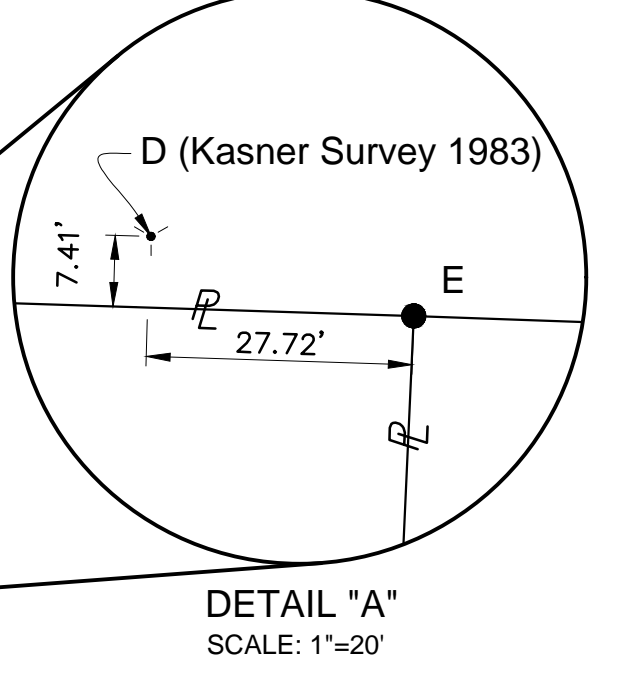
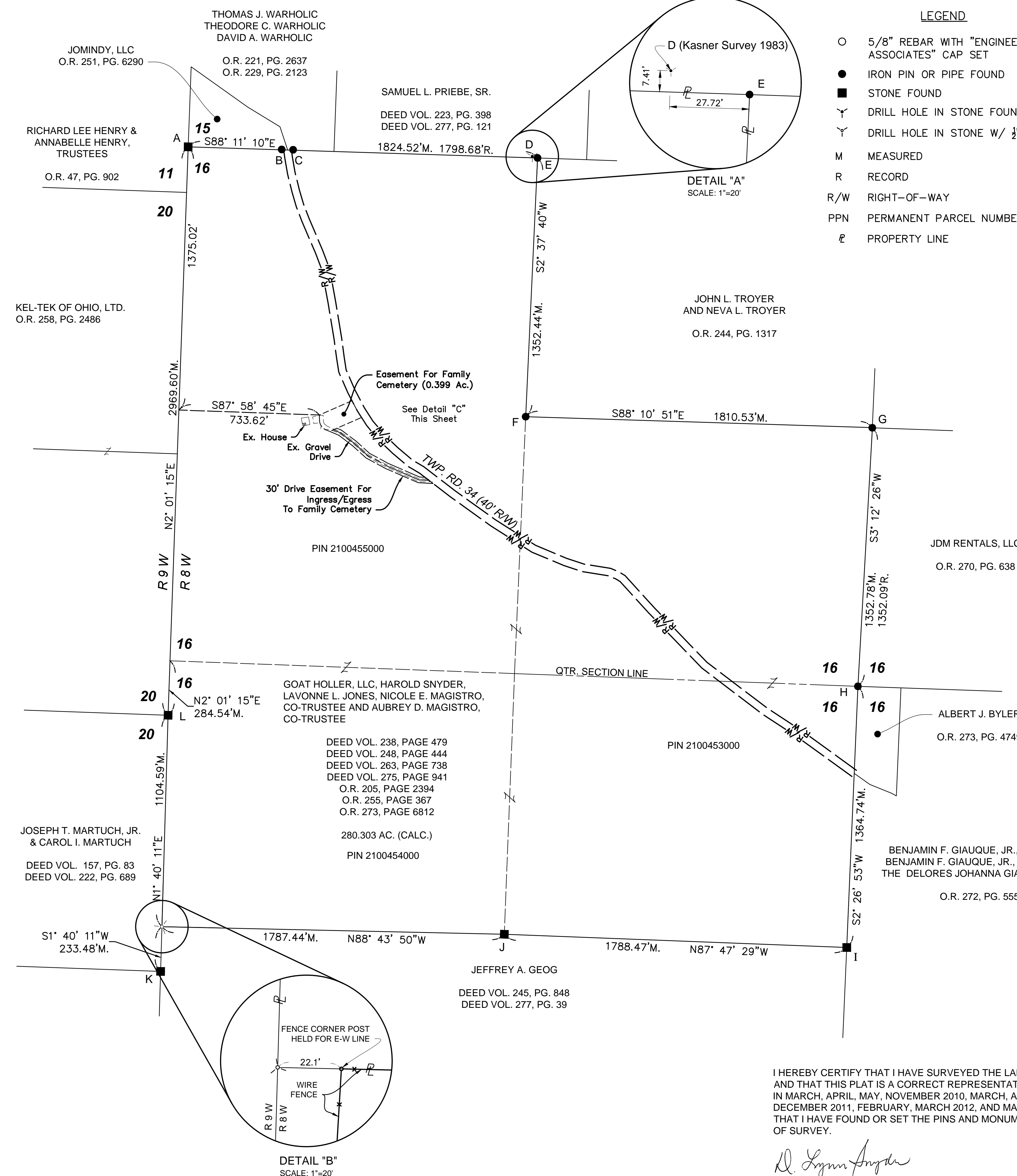
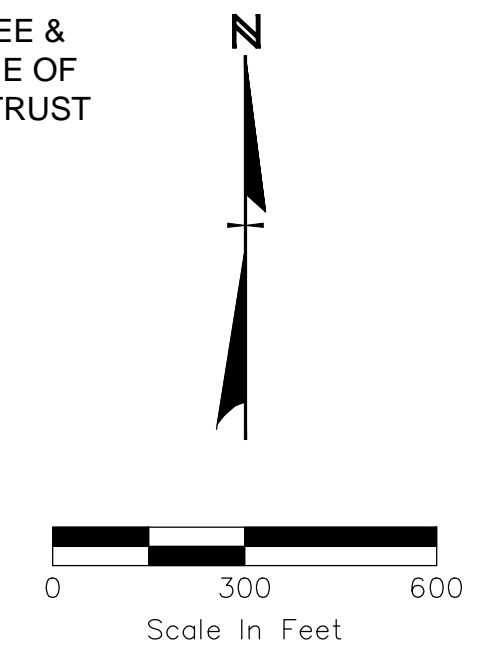
LINE	BEARING	DISTANCE
L1	N 66°25'58" E	20.71'
L2	S 67°08'32" E	38.85'
L3	S 52°57'34" E	91.70'
L4	S 47°50'31" E	95.90'
L5	S 61°31'47" E	112.79'
L6	S 66°27'43" E	182.75'
L7	S 86°54'48" E	53.26'

EXISTING MONUMENTS FOUND

POINT	DESCRIPTION	COMMENTS
A	Stone with "X"	Held for Corner and Range Line
B	5/8" Rebar	S88°23'26"E, 488.58' from Monument "A"
C	5/8" Rebar	S88°23'59"E, 548.18' from Monument "A"
D	Drill Hole In Stone	N73°10'20"W, 28.59' from Monument "E"
E	5/8" Rebar w/Baker cap	Held for Corner
F	5/8" Rebar w/Baker cap	Held for Corner
G	5/8" Rebar w/Baker cap	Held for Corner
H	5/8" Rebar w/Baker cap	Held for Center of Section 16 and Corner
I	Stone with "X"	Held for Corner
J	Stone with "X"	Held for Corner
K	Stone with "X"	Held for Property Line and Range Line
L	Stone with "X"	Held for Property Line and Range Line

BASIS OF BEARINGS
 THE BASIS OF BEARINGS IS RELATIVE TO GRID NORTH OF THE OHIO STATE PLANE COORDINATE SYSTEM, NORTH ZONE, NAD 83 (CORS96).

REFERENCES
 PLAT VOL. 9, PAGE 223
 PLAT VOL. 10, PAGE 737
 O.R. VOL. 2, PAGE 388 (11/22/2004)
 PLAT VOL. 19, PAGE 2263



I HEREBY CERTIFY THAT I HAVE SURVEYED THE LAND SHOWN ON THIS PLAT, AND THAT THIS PLAT IS A CORRECT REPRESENTATION OF THE LAND SURVEYED IN MARCH, APRIL, MAY, NOVEMBER 2010, MARCH, APRIL, NOVEMBER, DECEMBER 2011, FEBRUARY, MARCH 2012, AND MARCH, APRIL, MAY 2013, AND THAT I HAVE FOUND OR SET THE PINS AND MONUMENTS SHOWN ON THIS MAP OF SURVEY.

D. Lynn Snyder
 D. LYNN SNYDER P.S. 7287
 DATE 01/12/2021



ENGINEERING ASSOCIATES, INC.
 1935 EAGLE PASS - WOOSTER OHIO 44691
 TELEPHONE: (330) 345-6556
 FAX: (330) 345-8077

M:\jms\AutoCAD\Snyder_Form_Map_01-10-21.dwg - SURVEY MAP - Jan 11, 2021 - 6:34pm