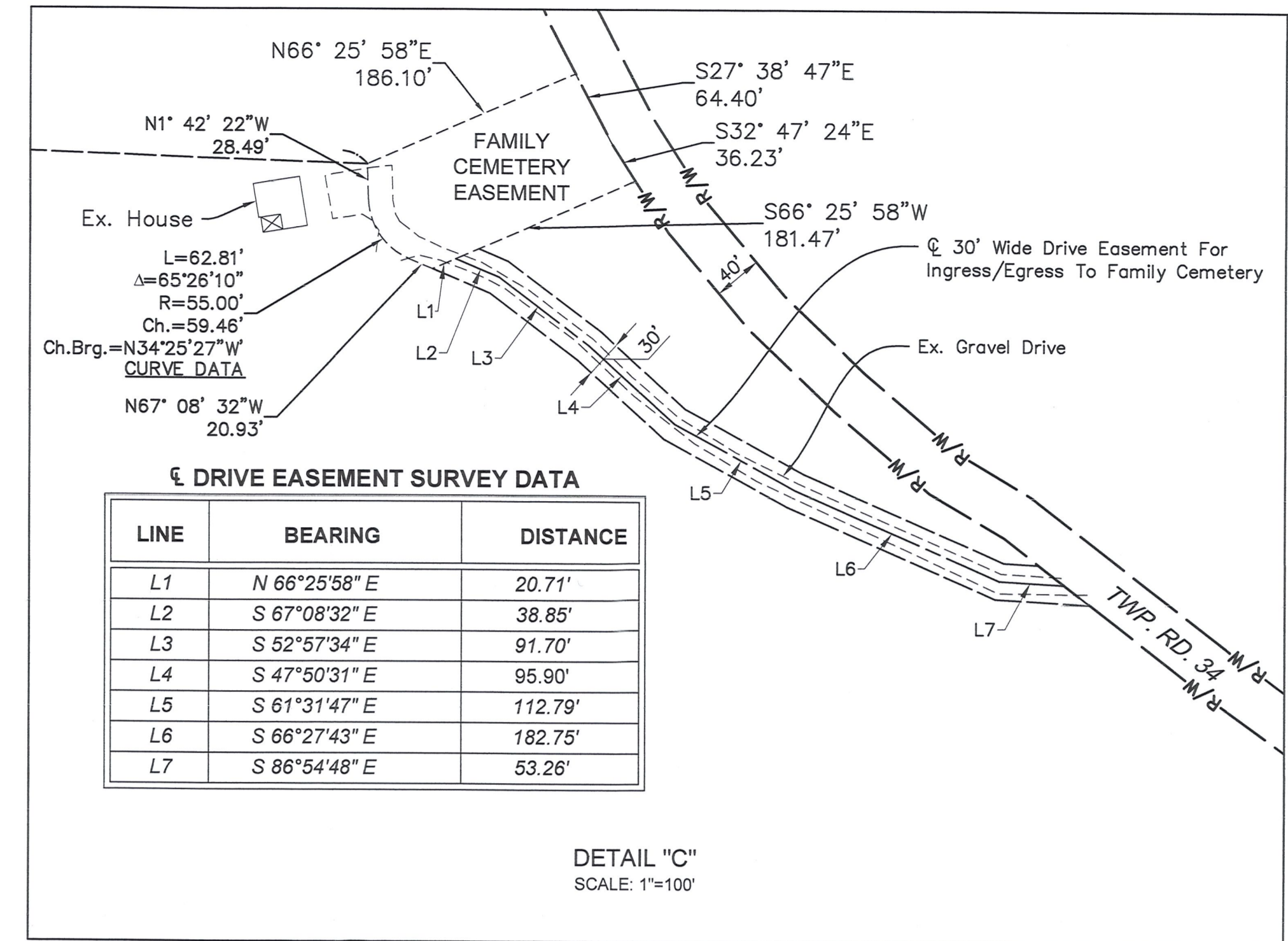
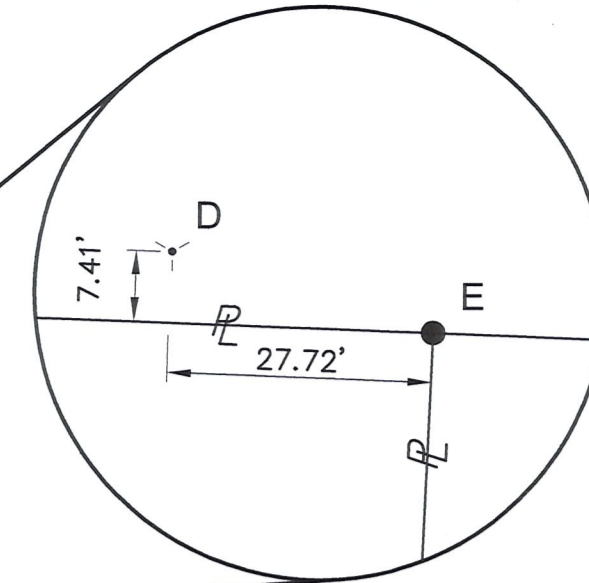


RETRACEMENT SURVEY

RICHLAND TOWNSHIP, COUNTY OF HOLMES
STATE OF OHIO
PART OF THE N.W. QTR. & S.W. QTR. SEC. 16
TOWNSHIP 8, RANGE 8

LEGEND

- 5/8" REBAR WITH "ENGINEERING ASSOCIATES" CAP SET
- IRON PIN OR PIPE FOUND
- STONE FOUND
- Y DRILL HOLE IN STONE FOUND
- Y DRILL HOLE IN STONE W/ 1/2" REBAR SET
- M MEASURED
- R RECORD
- R/W RIGHT-OF-WAY
- PPN PERMANENT PARCEL NUMBER
- ℓ PROPERTY LINE



ℓ DRIVE EASEMENT SURVEY DATA

LINE	BEARING	DISTANCE
L1	N 66°25'58" E	20.71'
L2	S 67°08'32" E	38.85'
L3	S 52°57'34" E	91.70'
L4	S 47°50'31" E	95.90'
L5	S 61°31'47" E	112.79'
L6	S 66°27'43" E	182.75'
L7	S 86°54'48" E	53.26'

EXISTING MONUMENTS FOUND

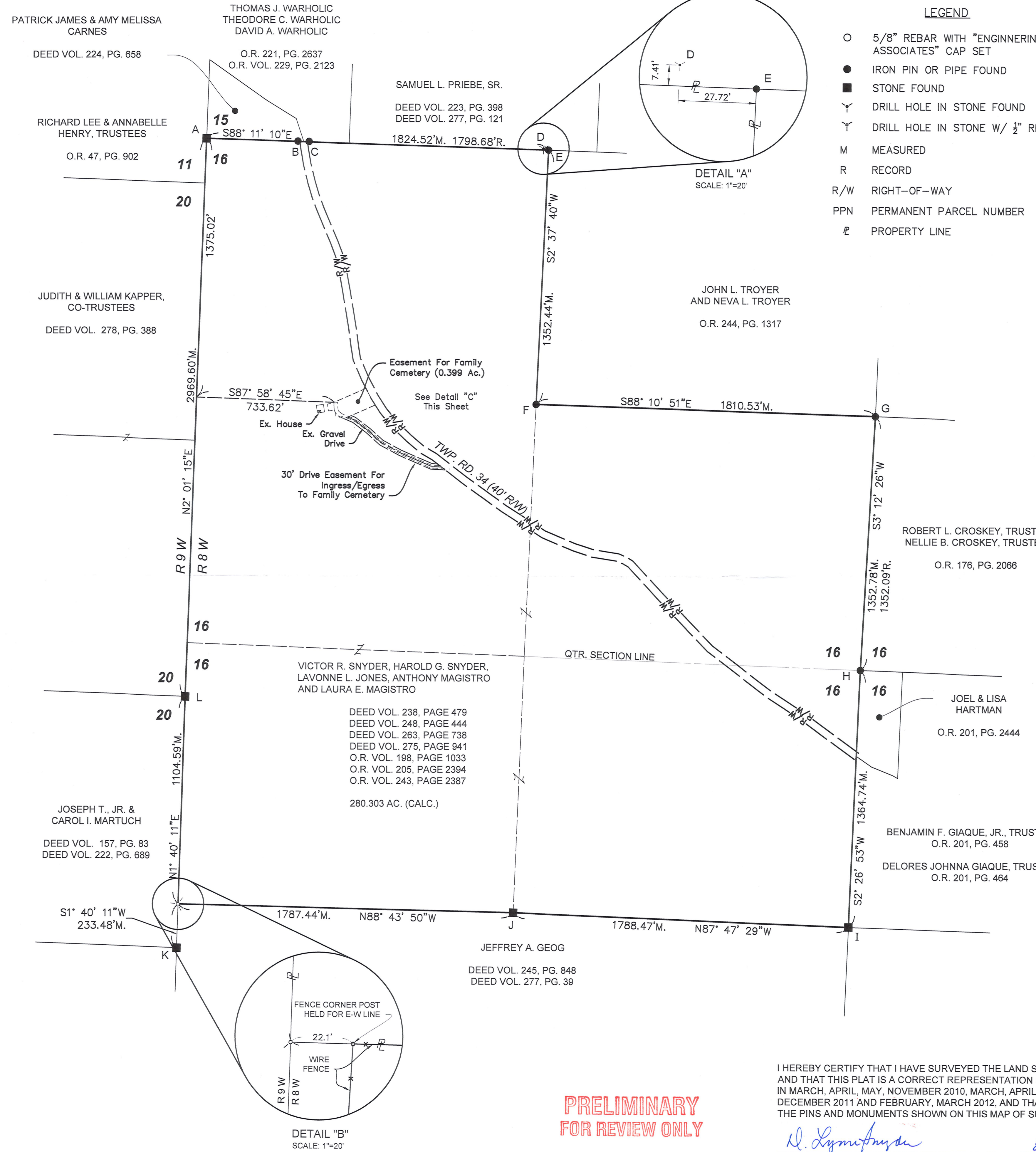
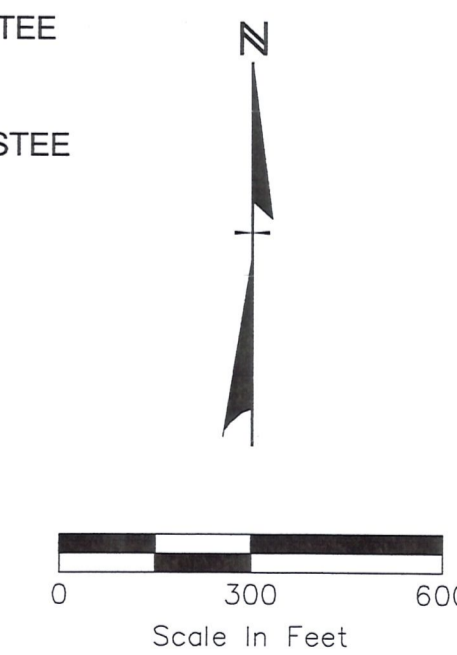
POINT	DESCRIPTION	COMMENTS
A	Stone with "X"	Held for Corner and Range Line
B	5/8" Rebar	1.74' N. of Property Line
C	5/8" Rebar	2.05' N. of Property Line
D	Drill Hole In Stone	7.41' N. of Property Line, (Kasner Survey 1983)
E	5/8" Rebar w/Baker cap	Held for Corner
F	5/8" Rebar w/Baker cap	Held for Corner
G	5/8" Rebar w/Baker cap	Held for Corner
H	5/8" Rebar w/Baker cap	Held for Center of Section 16 and Corner
I	Stone with "X"	Held for Corner
J	Stone with "X"	Held for Corner
K	Stone with "X"	Held for Property Line and Range Line
L	Stone with "X"	Held for Property Line and Range Line

BASIS OF BEARINGS

THE BASIS OF BEARINGS IS RELATIVE TO GRID NORTH OF THE OHIO STATE PLANE COORDINATE SYSTEM, NORTH ZONE, NAD 83 (CORS96).

REFERENCES

PLAT VOL. 9, PAGE 223
PLAT VOL. 10, PAGE 737
O.R. VOL. 2, PAGE 388 (11/22/2004)
PLAT VOL. 19, PAGE 2263



THOMAS J. WARHOLIC
THEODORE C. WARHOLIC
DAVID A. WARHOLIC

PATRICK JAMES & AMY MELISSA
CARNES

SAMUEL L. PRIEBE, SR.
DEED VOL. 223, PG. 398
DEED VOL. 277, PG. 121

JOHN L. TROYER
AND NEVA L. TROYER
O.R. 244, PG. 1317

ROBERT L. CROSKEY, TRUSTEE
NELLIE B. CROSKEY, TRUSTEE
O.R. 176, PG. 2066

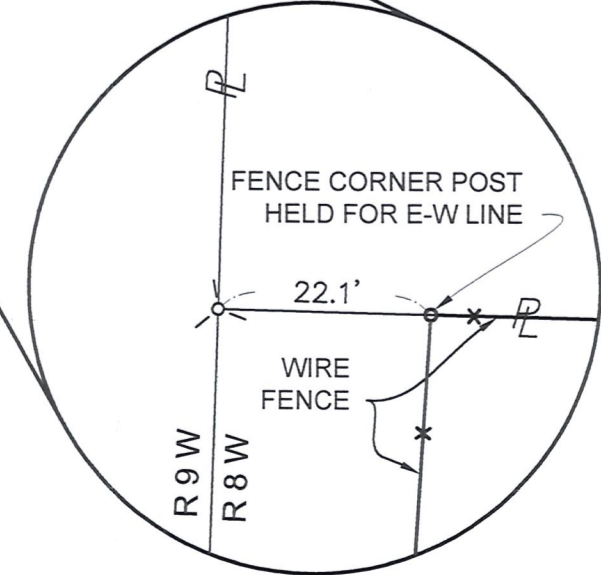
VICTOR R. SNYDER, HAROLD G. SNYDER,
LAVONNE L. JONES, ANTHONY MAGISTRO
AND LAURA E. MAGISTRO

DEED VOL. 238, PAGE 479
DEED VOL. 248, PAGE 444
DEED VOL. 263, PAGE 738
DEED VOL. 275, PAGE 941
O.R. VOL. 198, PAGE 1033
O.R. VOL. 205, PAGE 2394
O.R. VOL. 243, PAGE 2387
280.303 AC. (CALC.)

JOSEPH T., JR. &
CAROL I. MARTUCH
DEED VOL. 157, PG. 83
DEED VOL. 222, PG. 689

JEFFREY A. GEOG
DEED VOL. 245, PG. 848
DEED VOL. 277, PG. 39

BENJAMIN F. GIAQUE, JR., TRUSTEE
O.R. 201, PG. 458
DELORES JOHNNA GIAQUE, TRUSTEE
O.R. 201, PG. 464



PRELIMINARY
FOR REVIEW ONLY

I HEREBY CERTIFY THAT I HAVE SURVEYED THE LAND SHOWN ON THIS PLAT, AND THAT THIS PLAT IS A CORRECT REPRESENTATION OF THE LAND SURVEYED IN MARCH, APRIL, MAY, NOVEMBER 2010, MARCH, APRIL, NOVEMBER, DECEMBER 2011 AND FEBRUARY, MARCH 2012, AND THAT I HAVE FOUND OR SET THE PINS AND MONUMENTS SHOWN ON THIS MAP OF SURVEY.

D. LYNN SNYDER P.S. 7287
8/4/14
DATE



ENGINEERING ASSOCIATES, INC.
1935 EAGLE PASS - WOOSTER OHIO 44691
TELEPHONE: (330) 345-6556
FAX: (330) 345-8077