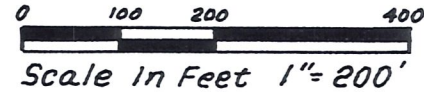


**RICHLAND TOWNSHIP  
HOLMES COUNTY, OHIO  
N.W. QTR., SEC. 15, T-8N, R-8W**



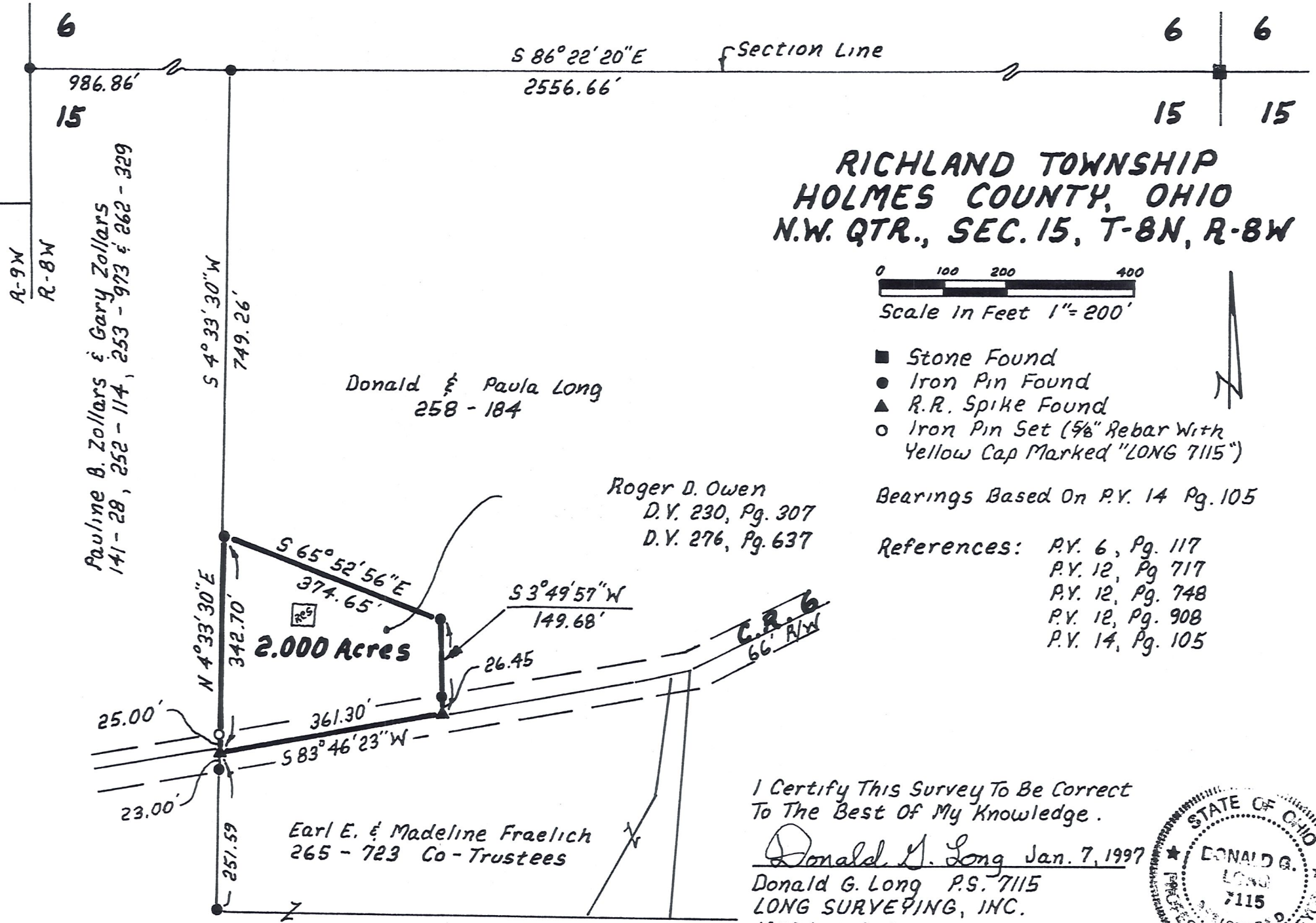
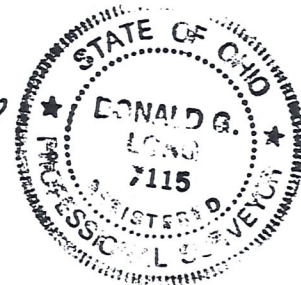
- Stone Found
- Iron Pin Found
- ▲ R.R. Spike Found
- Iron Pin Set (5/8" Rebar With Yellow Cap Marked "LONG 7115")

Bearings Based On P.V. 14 Pg. 105

- References:
- P.V. 6, Pg. 117
  - P.V. 12, Pg. 717
  - P.V. 12, Pg. 748
  - P.V. 12, Pg. 908
  - P.V. 14, Pg. 105

I Certify This Survey To Be Correct  
To The Best Of My Knowledge.

Donald G. Long Jan. 7, 1997  
Donald G. Long P.S. 7115  
LONG SURVEYING, INC.  
12524 C.R. 6  
Killbuck, Ohio 44637



Donald & Paula Long  
258 - 184

Roger D. Owen  
D.V. 230, Pg. 307  
D.V. 276, Pg. 637

**2.000 Acres**

Earl E. & Madeline Fraelich  
265 - 723 Co-Trustees

A-9W  
R-8W  
Pauline B. Zollars & Gary Zollars  
141-28, 252-114, 253-973 & 262-329

6  
986.86'  
15  
S 86° 22' 20" E  
2556.66'  
Section Line  
6  
15  
15