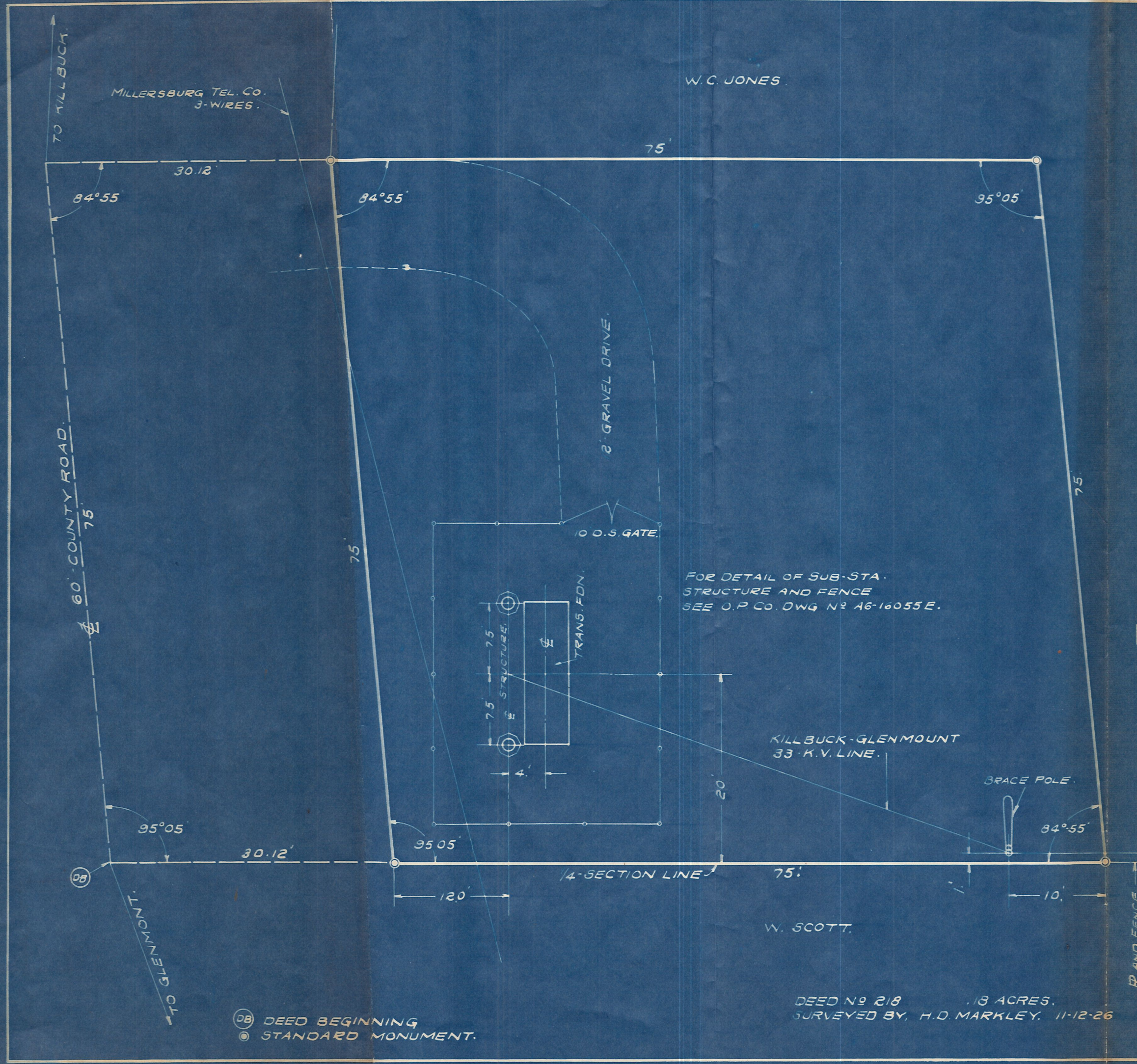


STATE OF OHIO.
 HOLMES COUNTY.
 RICHLAND TOWNSHIP.
 TWP 8 N - RANGE 8 W.
 SECTION 6.

W. C. JONES.



REDRAWN, 12-14-28.	
THE OHIO POWER CO. CANTON DIVISION.	
PLAT GLENMONT SUBSTATION SITE.	
SCALE	1" = 10'
DATE	11-24-26
DRAWN	D. B. J.
DWG. No.	A6-16034 D
TRACED	D. B. J.
DRAWER	
APPROVED	<i>Frank Howard</i>
A-46	



W. C. JONES.

FOR DETAIL OF SUB-STA.
 STRUCTURE AND FENCE
 SEE O.P. Co. DWG. No. A6-16055 E.

KILLBUCK-GLENMOUNT
 33-K.V. LINE.

W. SCOTT.

DEED No 218 .13 ACRES.
 SURVEYED BY, H.D. MARKLEY. 11-12-26

MILLERSBURG TEL. CO.
 3-WIRES.

60' COUNTY ROAD.
 75'

TO KILLBUCK.

TO GLENMONT.

DB DEED BEGINNING
 ○ STANDARD MONUMENT.