

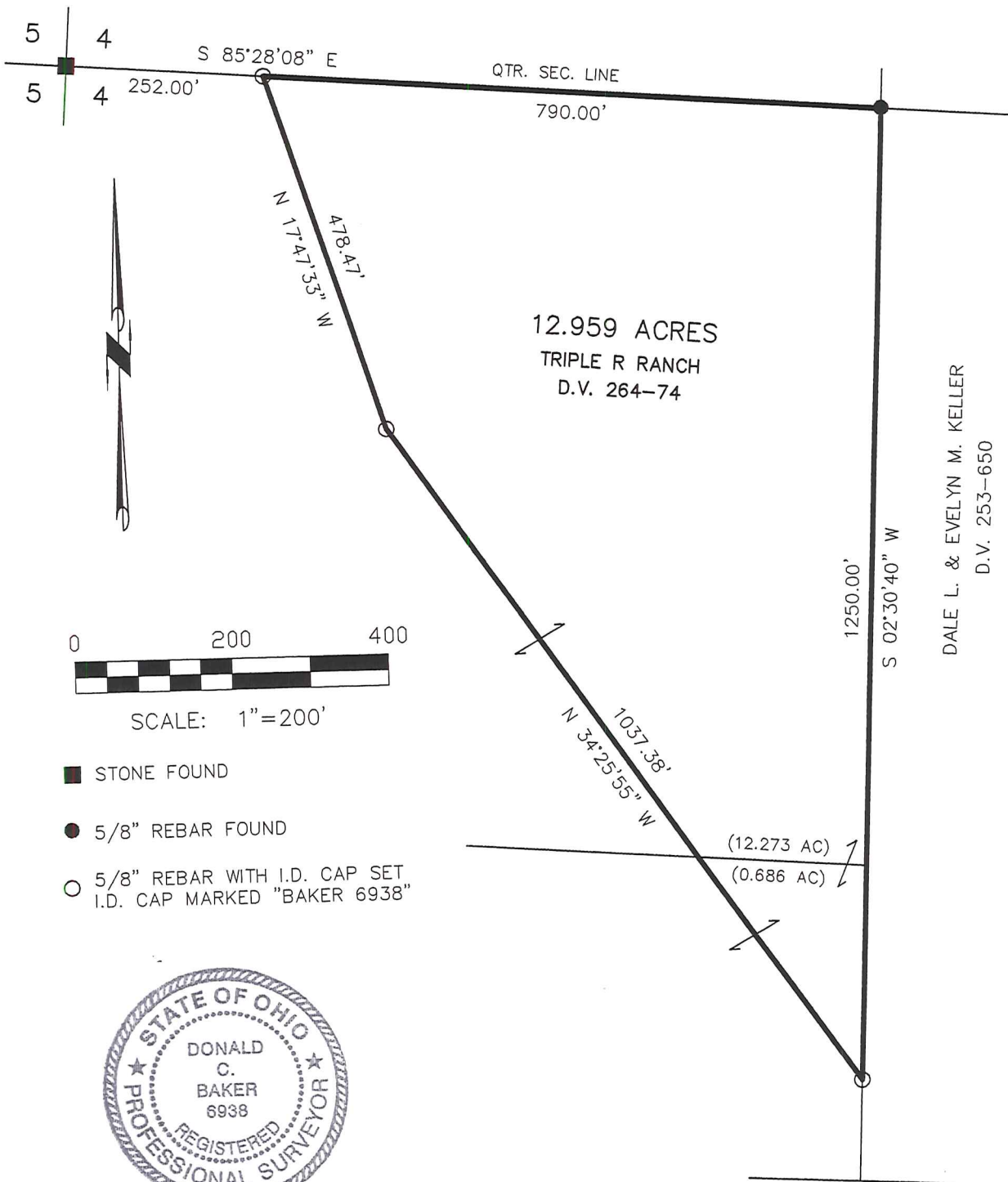
RICHLAND TOWNSHIP
 S.W. QTR. SECTION 4
 T-8 N; R-8 W
 HOLMES COUNTY, OHIO

SURVEYED FOR: MONTE ROHR

RECEIVED
 OCT 21 2003
 Hol. Co. Tax Map Office

REFERENCES:

- DEED VOL. 253 PAGE 650
- DEED VOL. 264 PAGE 74
- PLAT VOL. 12 PAGE 441
- BEARINGS FROM PLAT VOL. 12 PAGE 441



I CERTIFY THIS SURVEY TO BE CORRECT TO THE BEST OF MY KNOWLEDGE.

Donald C. Baker
 DONALD C. BAKER PS 6938
 DATE: OCT. 17, 2003
 FDB\AEG
 File Name: C:\WORK\S-778-03\ERZ



DONALD C. BAKER SURVEYING
 138 N. CLAY ST.
 MILLERSBURG, OH 44654
 PH. 330-674-4788
 FAX: 330-674-6027