

RICHLAND TOWNSHIP
 N.W. QTR. SECTION 4
 T-8 N; R-8 W
 HOLMES COUNTY, OHIO

SURVEYED FOR: MONTE ROHR

REFERENCES:

DEED VOL. 250 PAGE 408

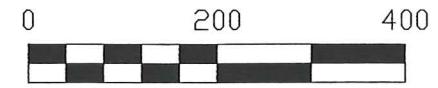
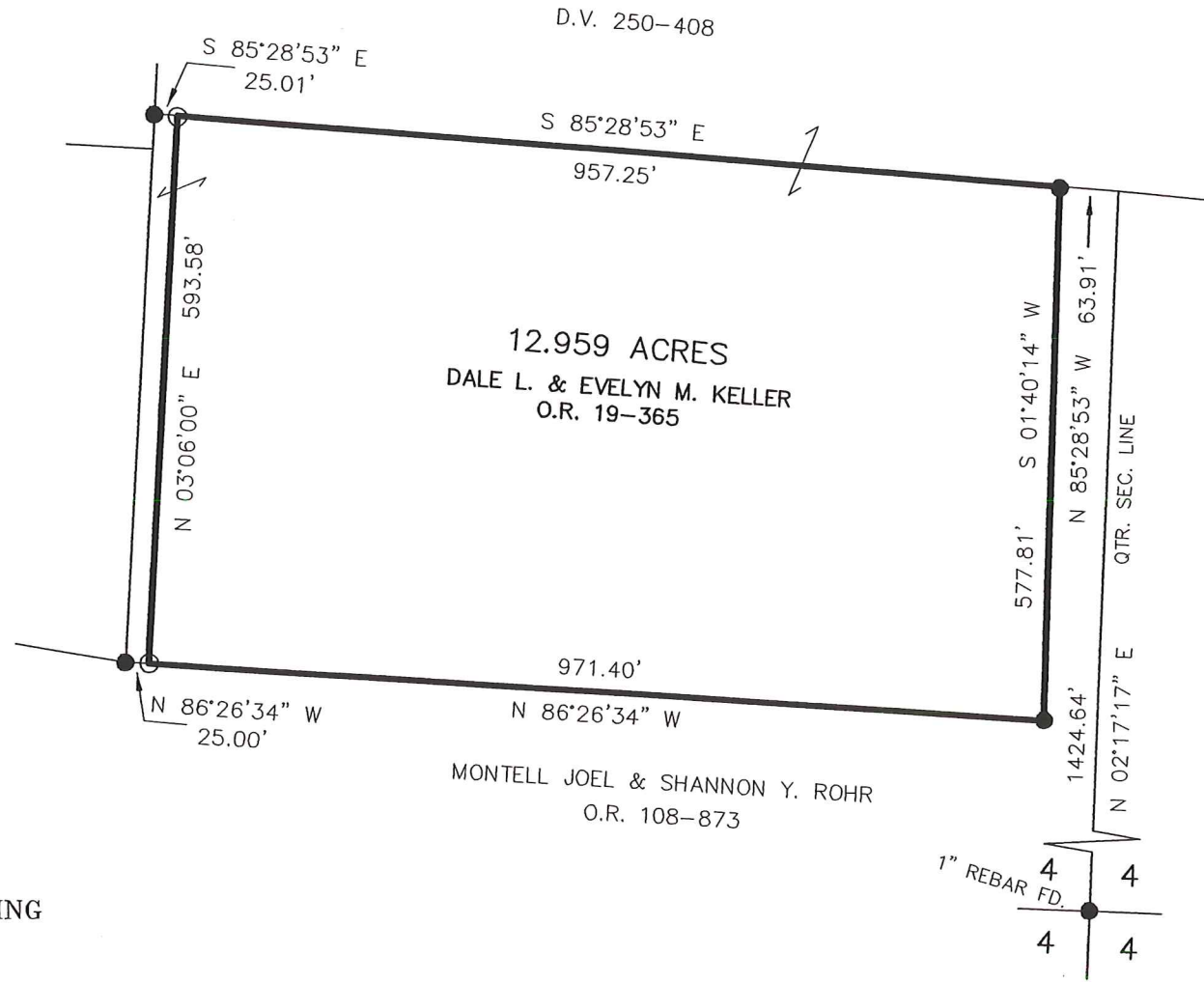
O.R. VOL. 19 PAGE 365

O.R. VOL. 108 PAGE 873

PLAT VOL. 16 PAGE 902

BEARINGS FROM PLAT VOL. 16 PAGE 902

RECEIVED
 OCT 21 2003
 Hol. Co. Tax Map Office



SCALE: 1"=200'

- 5/8" REBAR FOUND
UNLESS OTHERWISE NOTED
- 5/8" REBAR WITH I.D. CAP SET
I.D. CAP MARKED "BAKER 6938"



I CERTIFY THIS SURVEY TO BE CORRECT
 TO THE BEST OF MY KNOWLEDGE.

Donald C. Baker

DONALD C. BAKER PS 6938

DATE: OCT. 17, 2003

FDB\AEG

File Name: C:\WORK\S-778A-03\ERZ



DONALD C. BAKER SURVEYING
 138 N. CLAY ST.
 MILLERSBURG, OH 44654
 PH. 330-674-4788
 FAX: 330-674-6027