

# Survey of Easement

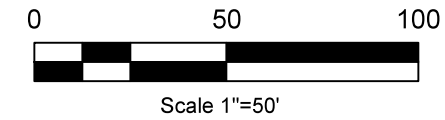
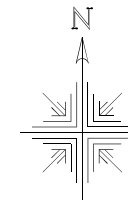
## Village of Glenmont Richland Township S.E. Qtr. Sec. 1 T-8 N; R-9 W Holmes County, Ohio

SURVEYED FOR: Devon Miller

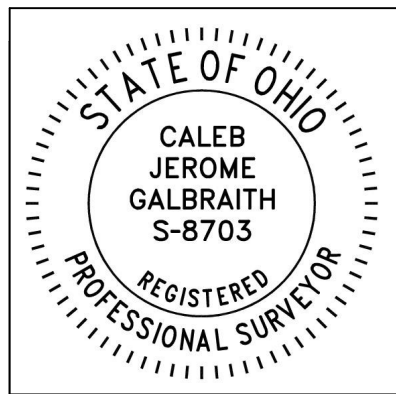
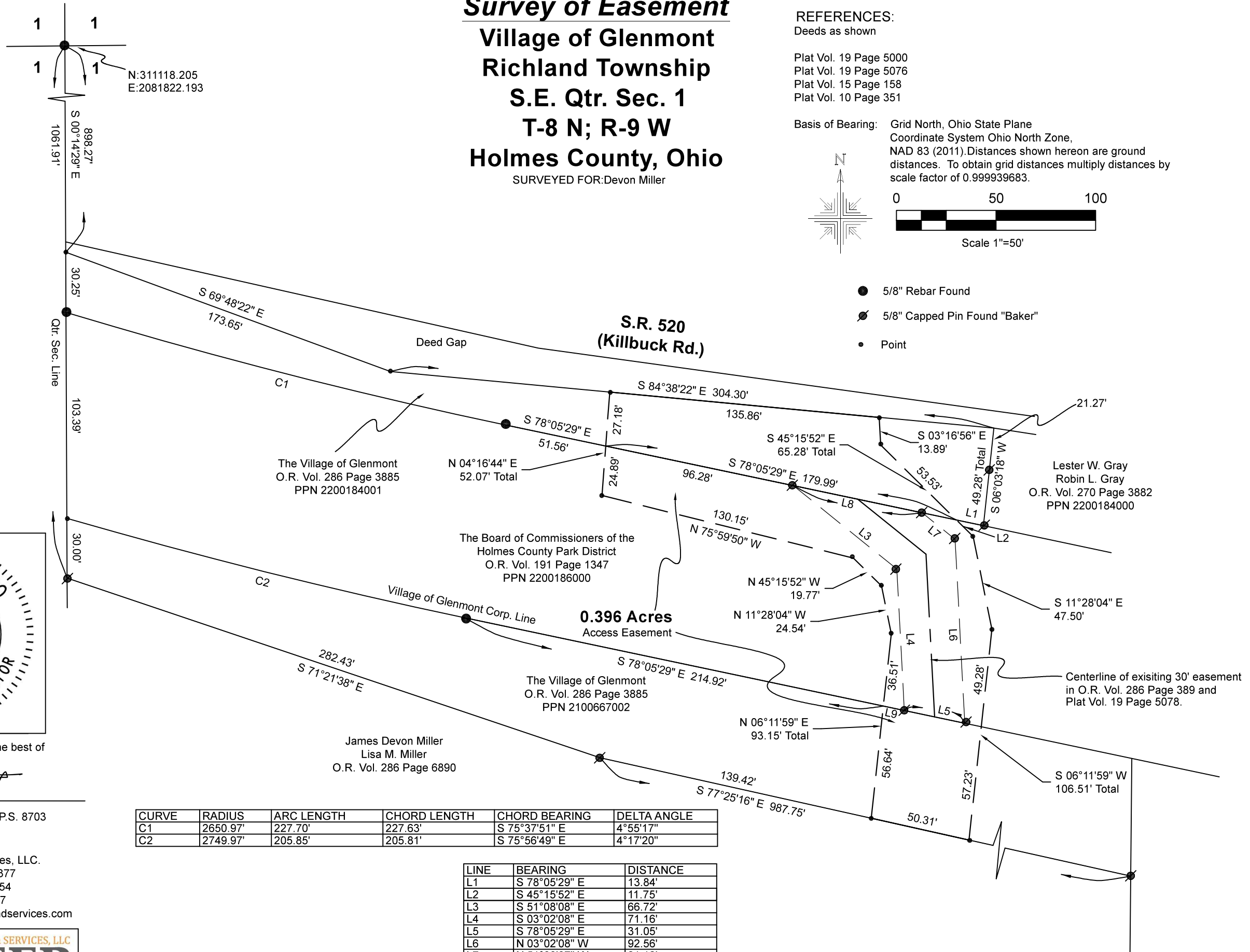
REFERENCES:  
Deeds as shown

Plat Vol. 19 Page 5000  
Plat Vol. 19 Page 5076  
Plat Vol. 15 Page 158  
Plat Vol. 10 Page 351

Basis of Bearing: Grid North, Ohio State Plane  
Coordinate System Ohio North Zone,  
NAD 83 (2011). Distances shown hereon are ground  
distances. To obtain grid distances multiply distances by  
scale factor of 0.999939683.



- 5/8" Rebar Found
- ⊙ 5/8" Capped Pin Found "Baker"
- Point



I certify this survey to be correct to the best of my knowledge.

Caleb Jerome Galbraith P.S. 8703  
Date: June 29, 2024  
Job ID: 11524

Pioneer Surveying & Services, LLC.  
5434 Township Road 377  
Millersburg, Ohio 44654  
Phone: 330-231-0497

Email: caleb@pioneersurveyingandservices.com



CURVE	RADIUS	ARC LENGTH	CHORD LENGTH	CHORD BEARING	DELTA ANGLE
C1	2650.97'	227.70'	227.63'	S 75°37'51" E	4°55'17"
C2	2749.97'	205.85'	205.81'	S 75°56'49" E	4°17'20"

LINE	BEARING	DISTANCE
L1	S 78°05'29" E	13.84'
L2	S 45°15'52" E	11.75'
L3	S 51°08'08" E	66.72'
L4	S 03°02'08" E	71.16'
L5	S 78°05'29" E	31.05'
L6	N 03°02'08" W	92.56'
L7	N 51°08'07" W	21.12'
L8	N 78°05'29" W	66.17'
L9	S 78°05'29" E	10.74'