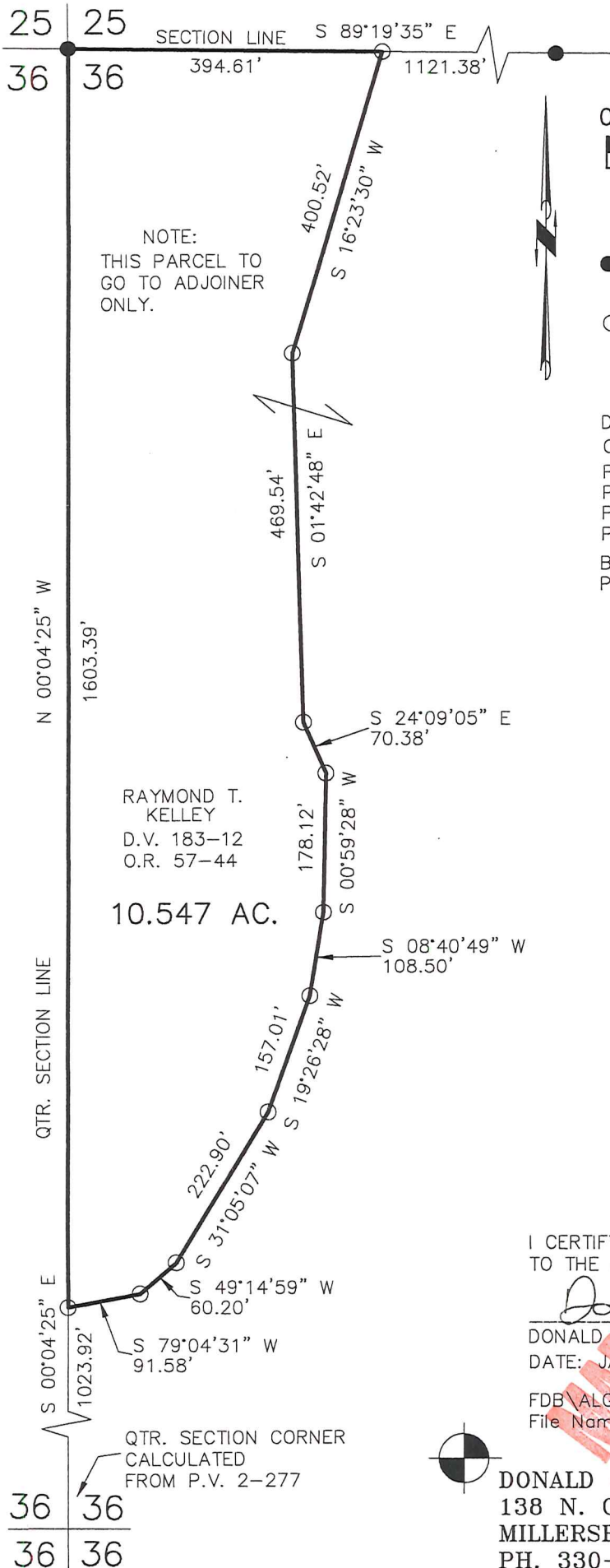


PRAIRIE TOWNSHIP  
N.E. QTR. SECTION 36  
T-14 N; R-13 W  
HOLMES COUNTY, OHIO

SURVEYED FOR: DAVID YODER

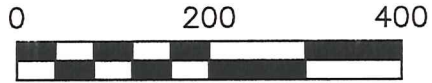


NOTE:  
THIS PARCEL TO  
GO TO ADJOINER  
ONLY.

RAYMOND T.  
KELLEY  
D.V. 183-12  
O.R. 57-44

10.547 AC.

QTR. SECTION CORNER  
CALCULATED  
FROM P.V. 2-277

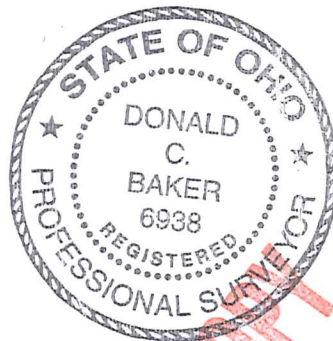


SCALE: 1"=200'

- 5/8" REBAR FOUND  
UNLESS OTHERWISE NOTED
- 5/8" REBAR WITH I.D. CAP SET  
I.D. CAP MARKED "BAKER 6938"

REFERENCES

- DEED VOL. 183 PAGE 12
- O.R. VOL. 57 PAGE 44
- PLAT VOL. 2 PAGE 277
- PLAT VOL. 14 PAGE 862
- PLAT VOL. 17 PAGE 85
- PLAT VOL. 16 PAGE 760
- BEARINGS FROM  
PLAT VOL. 2 PAGE 277



I CERTIFY THIS SURVEY TO BE CORRECT  
TO THE BEST OF MY KNOWLEDGE.

*Donald C. Baker*  
 DONALD C. BAKER P.S. 6938  
 DATE: JAN. 22, 2007

FDB\ALG  
 File Name: WORK2\S-886-06



DONALD C. BAKER SURVEYING  
 138 N. CLAY ST.  
 MILLERSBURG, OHIO, 44654  
 PH. 330-674-4788  
 FAX. 330-674-6027