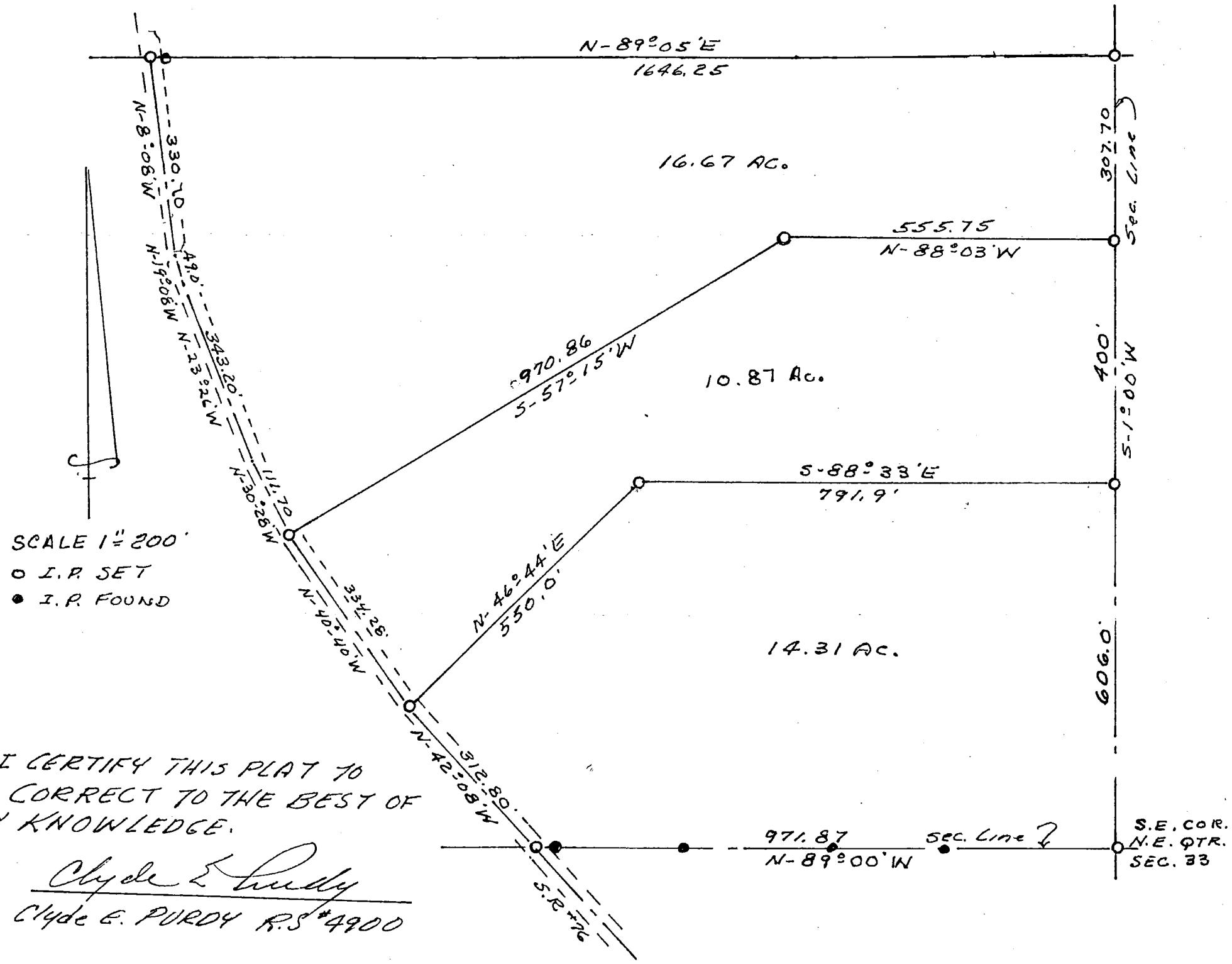


PRAIRIE TOWNSHIP
 N.E. QTR. SEC. 33
 TWP. 14 RANGE 13
 HOLMES COUNTY
 OHIO



I CERTIFY THIS PLAT TO
 BE CORRECT TO THE BEST OF
 MY KNOWLEDGE.

Clyde E. Purdy
 Clyde E. PURDY R.S.#4900

S.E. COR.
 N.E. QTR.
 SEC. 33